

Product datasheet for **RC225220**

MRO (NM_001127174) Human Tagged ORF Clone

Product data:

Product Type: Expression Plasmids
Product Name: MRO (NM_001127174) Human Tagged ORF Clone
Tag: Myc-DDK
Symbol: MRO
Synonyms: B29; C18orf3
Mammalian Cell Selection: Neomycin
Vector: pCMV6-Entry (PS100001)
E. coli Selection: Kanamycin (25 ug/mL)
ORF Nucleotide Sequence: >RC225220 representing NM_001127174
Red=Cloning site Blue=ORF Green=Tags(s)

TTTTGTAATACGACTCACTATAGGGCGGCCGGAATTCGTCGACTGGATCCGGTACCGAGGAGATCTGCC
GCC**CGATCGCC**

ATGGACCAAAGACAGAGGAGAATCTGGGCCAGCCCTTTCCATCCCTACTTCCCAGCCCAAGCAGAAAA
GGACATCAATGATATCTTTCTTTTCCAAGGTCTCTGGAACTGAGGTTCCAGAAGCGGGAGCCTTGAA
GAATGTGTTTTTCATCTTGGCAGAAAGAGCTCGGGACCCAGTGTAAAAAGCGTCACATGGCAATGAGA
AACTTGGGAACCATGGCCTATGAAGCCCTGACAAGGTGAGAAAGTATAAGAAAAATTGCCTCGACTGC
TGGTGTATGGACTGTATGACCCTGTGAATTTGGAAGTCATCCATGAGAGTATGAAGACTCTGACCCTCGT
TCTGGGCAAGATCCAGGGGAAAGTTTGGGTTCCTTCTTCATAGATATCACCTTCAGACCAGGACTTTA
TTAGATGACGCTTGCAAAACAACATTTCAAGCCTGTTCTCCATATCTGAACTAAAGGAGGAATACAGCT
TCCAGAGTGAAGAAGATCAAAGGAACACTAAGCTCTACCAGCAGCTGAGCCACTATCATCCAGAGATCCT
GCAGTTCTTCTACGCAATAAAATTCTG

ACGCGTACGCGGCCGCTCGAGCAGAACTCATCTCAGAAGAGGATCTGGCAGCAATGATATCCTGGATT
ACAAGGATGACGACGATAAGGTTTAA

Protein Sequence: >RC225220 representing NM_001127174
Red=Cloning site Green=Tags(s)

MDQRQRRLGQPLSIPTSQPKQKRTSMISFFSKVSWKLRQKREPLKNVFFILAERARDPSAKKRHMAMR
NLGTMAYEAPDKVRKYKIVLDLLVYGLYDPVNLEVIHESMKTLTVVLGKIQKGLGSFFIDITLQTRTL
LDDACKTTTFQACSPYLKLEEYSFQSEEDQRNTKLYQQLSHYHPEILQFFYANKIL

TRTRPLEQKLISEEDLAANDILDYKDDDDKV



Chromatograms: https://cdn.origene.com/chromatograms/ja1455_c11.zip

Restriction Sites: SgfI-MluI

Cloning Scheme:



ACCN: NM_001127174

ORF Size: 588 bp

OTI Disclaimer: The molecular sequence of this clone aligns with the gene accession number as a point of reference only. However, individual transcript sequences of the same gene can differ through naturally occurring variations (e.g. polymorphisms), each with its own valid existence. This clone is substantially in agreement with the reference, but a complete review of all prevailing variants is recommended prior to use. [More info](#)

OTI Annotation: This clone was engineered to express the complete ORF with an expression tag. Expression varies depending on the nature of the gene.

Components: The ORF clone is ion-exchange column purified and shipped in a 2D barcoded Matrix tube containing 10ug of transfection-ready, dried plasmid DNA (reconstitute with 100 ul of water).

Reconstitution Method:

1. Centrifuge at 5,000xg for 5min.
2. Carefully open the tube and add 100ul of sterile water to dissolve the DNA.
3. Close the tube and incubate for 10 minutes at room temperature.
4. Briefly vortex the tube and then do a quick spin (less than 5000xg) to concentrate the liquid at the bottom.
5. Store the suspended plasmid at -20°C. The DNA is stable for at least one year from date of shipping when stored at -20°C.

RefSeq: [NM_001127174.3](#)

RefSeq ORF: 591 bp

Locus ID: 83876

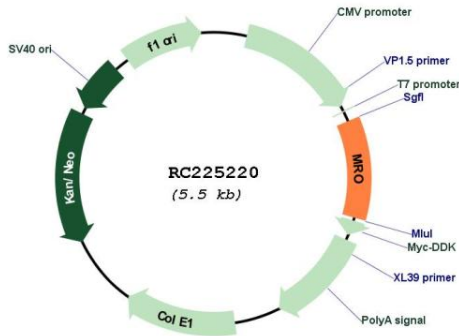
UniProt ID: [Q9BYG7](#)

Cytogenetics: 18q21.2

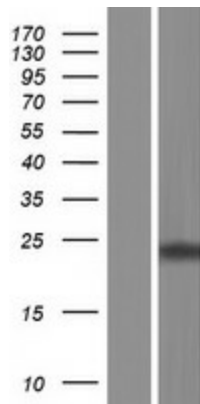
MW: 22.8 kDa

Gene Summary: This gene is specifically transcribed in males before and after differentiation of testis, and the encoded protein may play an important role in a mammalian sex determination. Multiple transcript variants encoding different isoforms have been found for this gene. [provided by RefSeq, Jul 2008]

Product images:



Circular map for RC225220



Western blot validation of overexpression lysate (Cat# [LY426685]) using anti-DDK antibody (Cat# [TA50011-100]). Left: Cell lysates from untransfected HEK293T cells; Right: Cell lysates from HEK293T cells transfected with RC225220 using transfection reagent MegaTran 2.0 (Cat# [TT210002]).