

## Product datasheet for RC225217

### CSRP3 (NM\_001127656) Human Tagged ORF Clone

#### Product data:

**Product Type:** Expression Plasmids  
**Product Name:** CSRP3 (NM\_001127656) Human Tagged ORF Clone  
**Tag:** Myc-DDK  
**Symbol:** CSRP3  
**Synonyms:** CLP; CMD1M; CMH12; CRP3; LMO4; MLP  
**Mammalian Cell Selection:** Neomycin  
**Vector:** pCMV6-Entry (PS100001)  
**E. coli Selection:** Kanamycin (25 ug/mL)  
**ORF Nucleotide Sequence:** >RC225217 ORF sequence  
 Red=Cloning site Blue=ORF Green=Tags(s)

TTTTGTAATACGACTCACTATAGGGCGGCCGGAATTCGTCGACTGGATCCGGTACCGAGGAGATCTGCC  
 GCC**CGATCGCC**

ATGCCAACTGGGGCGGAGGGCGCAAAATGTGGAGCCTGTGAAAAGACCGTCTACCATGCAGAAGAAATCC  
 AGTGCAATGGAAGGAGTTCCACAAGACGTGTTCCACTGCATGGCCTGCAGGAAGGCTCTTGACAGCAC  
 GACAGTCGCGGCTCATGAGTCGGAGATCTACTGCAAGGTGTGCTATGGGCGCAGATATGGCCCCAAAGGG  
 ATCGGGTATGGACAAGGCGCTGGCTGTCTCAGCACAGACAGGGCGAGCATCTCGGCCTGCAGTTCCAAC  
 AGTCCCCAAAGCCGGCAGCTCAGTTACCACCAGCAACCCTTCCAAATTCAGTCAAAGTTTGGAGAGTC  
 CGAGAAGTGCCCTCGATGTGGCAAGTCAGTCTATGCTGCTGAGAAGGTTATGGGAGGTGGCAAGCCTTGG  
 CACAAGACCTGTTTCCGCTGTGCCATCTGTGGGAAGAGTCTGGAGTCCACAAATGCTACTGACAAAGATG  
 GGGAACTTTATTGCAAAGTTTGCTATGCCAAAAATTTGGCCCCACGGGTATTGGGTTTGGAGGCCCTTAC  
 ACAACAAGTGAAAAGAAAGAA

**ACGCGT**ACGCGGCCGCTCGAGCAGAACTCATCTCAGAAGAGGATCTGGCAGCAAATGATATCCTGGATT  
 ACAAGGATGACGACGATAAGGTTTAA

**Protein Sequence:** >RC225217 protein sequence  
 Red=Cloning site Green=Tags(s)

MPNWGGGAKCGACEKTVYHAEIQCNGRSFHKTCFHCMACRKALDSTTVAHSEIYCKVCYGRRYGPKG  
 IGYGQAGCLSTDTGEHLGLQFQQSPKPARSVTTSNPSKFTAKFGESEKCPRCGKSVYAAEKVMGGGKPW  
 HKTCFRCAICGKSLSTNVTDKGELYCKVCYAKNFGPTIGFGGLTQQVEKKE

**TRTRPLEQKLISEEDLAANDILDYKDDDDKV**



[View online »](#)

**Chromatograms:** [https://cdn.origene.com/chromatograms/mk6577\\_c06.zip](https://cdn.origene.com/chromatograms/mk6577_c06.zip)

**Restriction Sites:** SgfI-MluI

**Cloning Scheme:**



**ACCN:** NM\_001127656

**ORF Size:** 582 bp

**OTI Disclaimer:** The molecular sequence of this clone aligns with the gene accession number as a point of reference only. However, individual transcript sequences of the same gene can differ through naturally occurring variations (e.g. polymorphisms), each with its own valid existence. This clone is substantially in agreement with the reference, but a complete review of all prevailing variants is recommended prior to use. [More info](#)

**OTI Annotation:** This clone was engineered to express the complete ORF with an expression tag. Expression varies depending on the nature of the gene.

**Components:** The ORF clone is ion-exchange column purified and shipped in a 2D barcoded Matrix tube containing 10ug of transfection-ready, dried plasmid DNA (reconstitute with 100 ul of water).

**Reconstitution Method:**

1. Centrifuge at 5,000xg for 5min.
2. Carefully open the tube and add 100ul of sterile water to dissolve the DNA.
3. Close the tube and incubate for 10 minutes at room temperature.
4. Briefly vortex the tube and then do a quick spin (less than 5000xg) to concentrate the liquid at the bottom.
5. Store the suspended plasmid at -20°C. The DNA is stable for at least one year from date of shipping when stored at -20°C.

**RefSeq:** [NM\\_001127656.1](#), [NP\\_001121128.1](#)

**RefSeq Size:** 1464 bp

**RefSeq ORF:** 584 bp

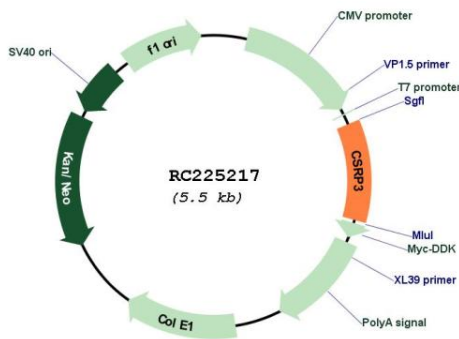
**Locus ID:** 8048

**Cytogenetics:** 11p15.1

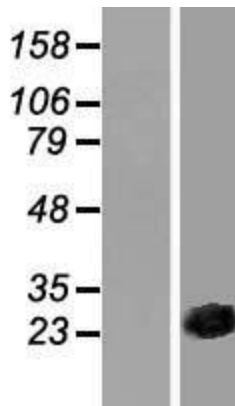
**MW:** 21 kDa

**Gene Summary:** This gene encodes a member of the CSRP family of LIM domain proteins, which may be involved in regulatory processes important for development and cellular differentiation. The LIM/double zinc-finger motif found in this protein is found in a group of proteins with critical functions in gene regulation, cell growth, and somatic differentiation. Mutations in this gene are thought to cause heritable forms of hypertrophic cardiomyopathy (HCM) and dilated cardiomyopathy (DCM) in humans. Alternatively spliced transcript variants with different 5' UTR, but encoding the same protein, have been found for this gene. [provided by RefSeq, Jul 2008]

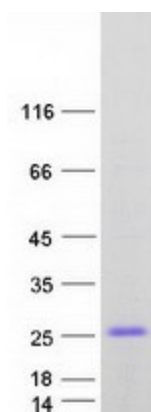
**Product images:**



Circular map for RC225217



Western blot validation of overexpression lysate (Cat# [LY426837]) using anti-DDK antibody (Cat# [TA50011-100]). Left: Cell lysates from untransfected HEK293T cells; Right: Cell lysates from HEK293T cells transfected with RC225217 using transfection reagent MegaTran 2.0 (Cat# [TT210002]).



Coomassie blue staining of purified CSRP3 protein (Cat# [TP325217]). The protein was produced from HEK293T cells transfected with CSRP3 cDNA clone (Cat# RC225217) using MegaTran 2.0 (Cat# [TT210002]).