

Product datasheet for RC225215

C7orf50 (NM_001134395) Human Tagged ORF Clone

Product data:

Product Type: Expression Plasmids
Product Name: C7orf50 (NM_001134395) Human Tagged ORF Clone
Tag: Myc-DDK
Symbol: C7orf50
Synonyms: YCR016W
Mammalian Cell Selection: Neomycin
Vector: pCMV6-Entry (PS100001)
E. coli Selection: Kanamycin (25 ug/mL)
ORF Nucleotide Sequence: >RC225215 ORF sequence
 Red=Cloning site Blue=ORF Green=Tags(s)

TTTTGTAATACGACTCACTATAGGGCGGCCGGAATTCGTCGACTGGATCCGGTACCGAGGAGATCTGCC
 GCCCGCATCGCC

ATGGCAAAACAGAAAGAGAAAAGTTCCTGAAGTGACAGAGAAAAAGAACAAAAAGCTGAAGAAGGCGTCAG
 CAGAGGGGCCACTGCTGGGCCCTGAGGCTGCACCAAGTGGCGAAGGAGCCGGCTCCAAGGGCGAAGCTGT
 GCTCAGGCCCGGGCTGGACGCAGAGCCAGAGCTGTCCCCAGAGGAGCAGAGGGTCTGAAAGGAAGCTG
 AAAAAGGAACGGAAGAAAGAGGAGAGGCAGCGTCTGCGGGAGGCAGGCCCTGTGGCCAGCACCCGCTG
 CCAGGCGCTCGGGGCCGAAGTGGCCCTGGACTACCTCTGCAGATGGGCCAAAAGCACAAGAAGTGGAG
 GTTTCAGAAGACGAGGCAGAGCTGGCTCCTGCTGCACATGTATGACAGTGACAAGTTCCCGATGAGCAC
 TTCTCCACCCTGCTGGCCTACCTGGAGGGGCTGCAGGGCCGGGCCGAGAGCTGACGGTGCAGAAGGCGG
 AAGCCCTGATGCGGGAGCTGGATGAGGAGGGCTCTGATCCCCCTGCCGGGGAGGGCCAGCGCATCCG
 ACAGGTGCTGCAGCTGCTCTCC

ACGCGTACGCGGCCGCTCGAGCAGAACTCATCTCAGAAGAGGATCTGGCAGCAATGATATCCTGGATT
 ACAAGGATGACGACGATAAGGTTTAA

Protein Sequence: >RC225215 protein sequence
 Red=Cloning site Green=Tags(s)

MAKQKRKVPVEKKNKKLKKASAEGPLLGPEAAPSSEGAGSKGEAVLRPGLDAEPELSPEEQRVLERKL
 KKERKKEERQRLREAGLVAQHPPARRSGAELALDYLCRWAQKHKNRWFQKTRQTWLLHMYDSKVPDEH
 FSTLLAYLEGLQGRARELTVQKAEALMRELDEEGSDPPLPGRAQIRQVLQLLS

TRTRPLEQKLISEEDLAANDILDYKDDDDKV

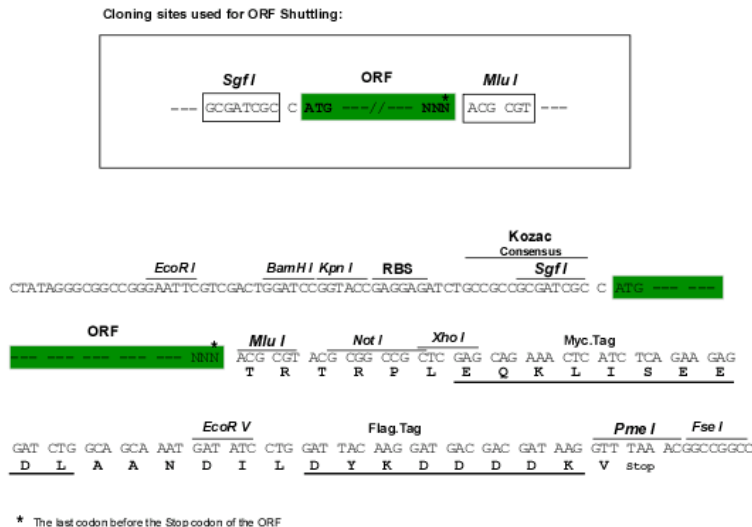


[View online »](#)

Chromatograms: https://cdn.origene.com/chromatograms/mk6410_b06.zip

Restriction Sites: SgfI-MluI

Cloning Scheme:



ACCN: NM_001134395

ORF Size: 582 bp

OTI Disclaimer: The molecular sequence of this clone aligns with the gene accession number as a point of reference only. However, individual transcript sequences of the same gene can differ through naturally occurring variations (e.g. polymorphisms), each with its own valid existence. This clone is substantially in agreement with the reference, but a complete review of all prevailing variants is recommended prior to use. [More info](#)

OTI Annotation: This clone was engineered to express the complete ORF with an expression tag. Expression varies depending on the nature of the gene.

Components: The ORF clone is ion-exchange column purified and shipped in a 2D barcoded Matrix tube containing 10ug of transfection-ready, dried plasmid DNA (reconstitute with 100 ul of water).

Reconstitution Method:

1. Centrifuge at 5,000xg for 5min.
2. Carefully open the tube and add 100ul of sterile water to dissolve the DNA.
3. Close the tube and incubate for 10 minutes at room temperature.
4. Briefly vortex the tube and then do a quick spin (less than 5000xg) to concentrate the liquid at the bottom.
5. Store the suspended plasmid at -20°C. The DNA is stable for at least one year from date of shipping when stored at -20°C.

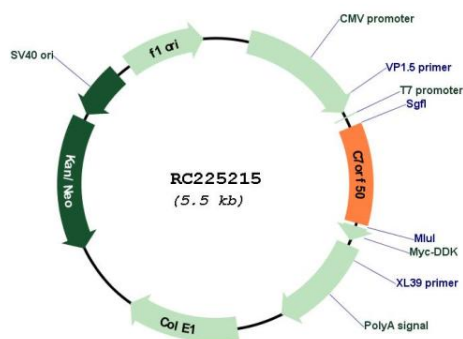
RefSeq: [NM_001134395.1](#), [NP_001127867.1](#)

RefSeq Size: 1301 bp

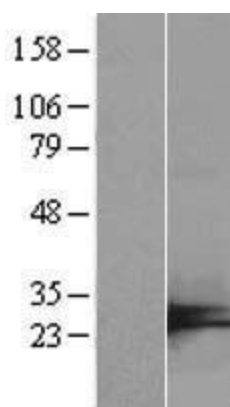
RefSeq ORF: 585 bp

Locus ID: 84310

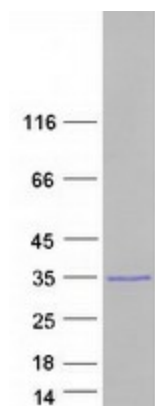
UniProt ID: [Q9BRJ6](#)
 Cytogenetics: 7p22.3
 MW: 22.1 kDa

Product images:


Circular map for RC225215



Western blot validation of overexpression lysate (Cat# [LY427415]) using anti-DDK antibody (Cat# [TA50011-100]). Left: Cell lysates from untransfected HEK293T cells; Right: Cell lysates from HEK293T cells transfected with [RC225216] using transfection reagent MegaTran 2.0 (Cat# [TT210002]).



Coomassie blue staining of purified C7orf50 protein (Cat# [TP325215]). The protein was produced from HEK293T cells transfected with C7orf50 cDNA clone (Cat# RC225215) using MegaTran 2.0 (Cat# [TT210002]).