

Product datasheet for **RC225214**

CD300LD (NM_001115152) Human Tagged ORF Clone

Product data:

Product Type: Expression Plasmids
Product Name: CD300LD (NM_001115152) Human Tagged ORF Clone
Tag: Myc-DDK
Symbol: CD300LD
Synonyms: CD300D; CLM-4; CLM-5; CMRF35-A4; CMRF35A4
Mammalian Cell Selection: Neomycin
Vector: pCMV6-Entry (PS100001)
E. coli Selection: Kanamycin (25 ug/mL)
ORF Nucleotide Sequence: >RC225214 representing NM_001115152
 Red=Cloning site Blue=ORF Green=Tags(s)

TTTTGTAATACGACTCACTATAGGGCGGCCGGAATTCGTCGACTGGATCCGGTACCGAGGAGATCTGCC
 GCC**CGATCGCC**

ATGTGGCTGTCCCCTCTGCTGCTTCTCATCTCCCAGGTTACTCCATTGCCGCTAAAATCACTGGTC
 CAACAACAGTGAATGGCTCGGAGCAGGGCTCATTGACTGTGCAGTGTGCTTATGGCTCAGGCTGGGAGAC
 CTACTTGAAGTGGCGGTGCAAGGAGCTGATTGGAATTACTGTAACATCCTTGTTAAAACAATGGATCA
 GAGCAGGAGGTAAGAAGAATCGAGTTTCCATCAGGGACAATCAGAAAAACCACGTGTTCCCGTGACCA
 TGGAGAATCTCAAAGAGATGATGCTGACAGTTATTGGTGTGGGACTGAGAGACCTGGAATTGATCTTGG
 GGTCAAAGTTCAAGTACCATAACCCAGGCACAAACTGCAGTCTCAGAATGGACAACCAACAGCA
 AGCCTGGCTTTCAGCTGCAGCCACCCAGAAGACCAGCAGCCCCCTCACCAGGTCCCCGCTCAAGAGCA
 CCCACTTCTGTTCTGTTCTCTCTGGAGCTGCCTCTGCTCCTGAGCATGCTGGGACCCTCTCTGGGT
 AAACAGACCACAAAGAAGGTCT

ACGCGTACGCGGCCGCTCGAGCAGAACTCATCTCAGAAGAGGATCTGGCAGCAAATGATATCCTGGATT
 ACAAGGATGACGACGATAAGGTTTAA

Protein Sequence: >RC225214 representing NM_001115152
 Red=Cloning site Green=Tags(s)

MWLSPLLLLLILPGYSIAAKITGPTTVNGSEQSLTVQCAYGSGWETYLKWRQCQADWNYCNILVKTNGS
 EQEVKKNRVSIRDNQKNHVFTVTMENLKRDDADSYWCGTERPGIDLGVKVQVTINPGTQTAVSEWTTTAA
 SLAFTAAATQKTSPLTRSPKSTHFLFLLELPLLLSMLGTVLWVNRQRRS

TRTRPLEQKLISEEDLAANDILDYKDDDDKV



[View online »](#)

Chromatograms: https://cdn.origene.com/chromatograms/mk8033_c07.zip

Restriction Sites: SgfI-MluI

Cloning Scheme:



ACCN: NM_001115152

ORF Size: 582 bp

OTI Disclaimer: The molecular sequence of this clone aligns with the gene accession number as a point of reference only. However, individual transcript sequences of the same gene can differ through naturally occurring variations (e.g. polymorphisms), each with its own valid existence. This clone is substantially in agreement with the reference, but a complete review of all prevailing variants is recommended prior to use. [More info](#)

OTI Annotation: This clone was engineered to express the complete ORF with an expression tag. Expression varies depending on the nature of the gene.

Components: The ORF clone is ion-exchange column purified and shipped in a 2D barcoded Matrix tube containing 10ug of transfection-ready, dried plasmid DNA (reconstitute with 100 ul of water).

Reconstitution Method:

1. Centrifuge at 5,000xg for 5min.
2. Carefully open the tube and add 100ul of sterile water to dissolve the DNA.
3. Close the tube and incubate for 10 minutes at room temperature.
4. Briefly vortex the tube and then do a quick spin (less than 5000xg) to concentrate the liquid at the bottom.
5. Store the suspended plasmid at -20°C. The DNA is stable for at least one year from date of shipping when stored at -20°C.

RefSeq: [NM_001115152.2](#)

RefSeq ORF: 585 bp

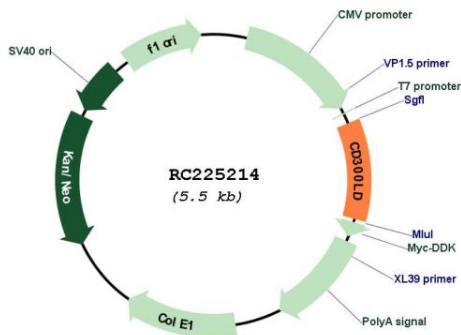
Locus ID: 100131439

UniProt ID: [Q6UXZ3](#)

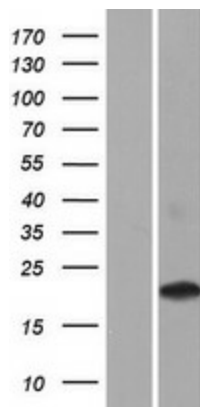
Cytogenetics: 17q25.1

MW: 21.4 kDa

Product images:



Circular map for RC225214



Western blot validation of overexpression lysate (Cat# [LY426525]) using anti-DDK antibody (Cat# [TA50011-100]). Left: Cell lysates from untransfected HEK293T cells; Right: Cell lysates from HEK293T cells transfected with RC225214 using transfection reagent MegaTran 2.0 (Cat# [TT210002]).