

Product datasheet for RC225212

MSGN1 (NM_001105569) Human Tagged ORF Clone

Product data:

Product Type: Expression Plasmids
Product Name: MSGN1 (NM_001105569) Human Tagged ORF Clone
Tag: Myc-DDK
Symbol: MSGN1
Synonyms: MSOG; pMsgn1
Mammalian Cell Selection: Neomycin
Vector: pCMV6-Entry (PS100001)
E. coli Selection: Kanamycin (25 ug/mL)
ORF Nucleotide Sequence: >RC225212 representing NM_001105569
 Red=Cloning site Blue=ORF Green=Tags(s)

TTTTGTAATACGACTCACTATAGGGCGGCCGGAATTCGTCGACTGGATCCGGTACCGAGGAGATCTGCC
 GCC**CGATCGCC**

ATGGACAACCTGCGCGAGACTTTCCTCAGCCTCGAGGATGGCTTGGCTCCTCTGACAGCCCTGGCCTGC
 TGTCTTCTGGGACTGGAAGGACAGGGCAGGGCCCTTTGAGCTGAATCAGGCCTCCCCCTCTCAGAGCCT
 TTCCCGGCTCCATCGTGAATCCTATTCTTCTCTCCCTGTCCAGCTGTGGCTGGGCTGCCCTGTGAG
 CACGGCGGGCCAGCAGTGGGGCAGCGAAGGCTGCAGTGTGGTGGGGCCAGTGGCCTGGTAGAGGTGG
 ACTACAATATGTTAGCTTTCAGCCACCCACCTTCAGGGCGGTGGTGGCCCAAGGCCAGAAGGGCAC
 CAAAGTCAGGATGTCTGTCCAGCGGAGGCGAAAGCCAGCGAGAGGGAGAAGCTCAGGATGAGGACCTTG
 GCAGATGCCCTGCACACCTCCGGAATTACCTGCCACCTGTCTACAGCCAGAGAGCCAGCCTCTACCA
 AGATCCAGACTCAAGTACACCATCAAGTACATCGGGGAACTCACAGACCTCCTTAACCGCGCAGAGA
 GCCAGAGCCAGAGCGCG

ACGCGTACGCGGCCGCTCGAGCAGAACTCATCTCAGAAGAGGATCTGGCAGCAATGATATCCTGGATT
 ACAAGGATGACGACGATAAGGTTTAA

Protein Sequence: >RC225212 representing NM_001105569
 Red=Cloning site Green=Tags(s)

MDNLRETFLSLEDGLSSDSPGLLSSWDWKDRAGPFELNQASPSQSLSPAPSLESYSSSPCAVAGLPCE
 HGGASSGGSEGC SVGGASGLVEVDYNMLAFQPTHLQGGGPKAQKGTKVRMSVQRRRKASEREKLRMRTL
 ADALHLRNYLPPVYSQRGQPLTKIQTLKYTIKYIGELTDLLNRGREPRAQSA

TRTRPLEQKLISEEDLAANDILDYKDDDDKV

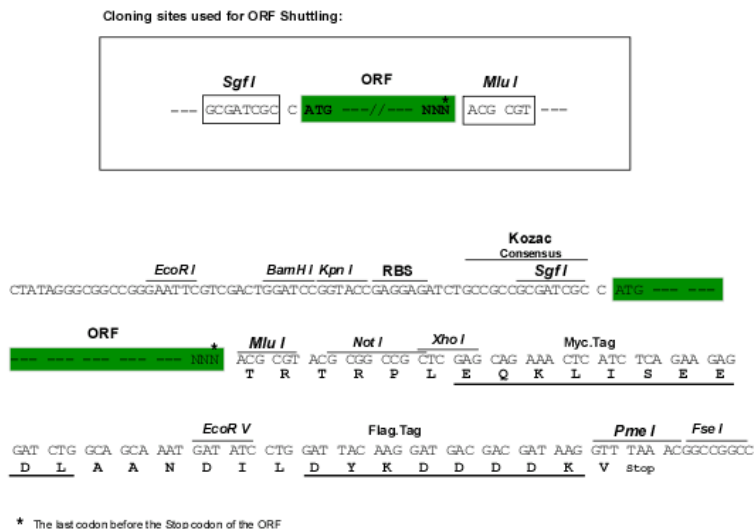


[View online »](#)

Chromatograms: https://cdn.origene.com/chromatograms/mk8033_c08.zip

Restriction Sites: SgfI-MluI

Cloning Scheme:



ACCN: NM_001105569

ORF Size: 579 bp

OTI Disclaimer: The molecular sequence of this clone aligns with the gene accession number as a point of reference only. However, individual transcript sequences of the same gene can differ through naturally occurring variations (e.g. polymorphisms), each with its own valid existence. This clone is substantially in agreement with the reference, but a complete review of all prevailing variants is recommended prior to use. [More info](#)

OTI Annotation: This clone was engineered to express the complete ORF with an expression tag. Expression varies depending on the nature of the gene.

Components: The ORF clone is ion-exchange column purified and shipped in a 2D barcoded Matrix tube containing 10ug of transfection-ready, dried plasmid DNA (reconstitute with 100 ul of water).

Reconstitution Method:

1. Centrifuge at 5,000xg for 5min.
2. Carefully open the tube and add 100ul of sterile water to dissolve the DNA.
3. Close the tube and incubate for 10 minutes at room temperature.
4. Briefly vortex the tube and then do a quick spin (less than 5000xg) to concentrate the liquid at the bottom.
5. Store the suspended plasmid at -20°C. The DNA is stable for at least one year from date of shipping when stored at -20°C.

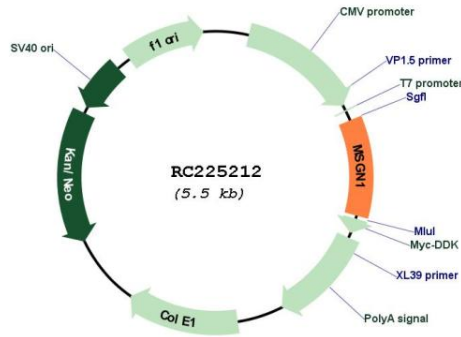
RefSeq: [NM_001105569.3](#)

RefSeq ORF: 582 bp

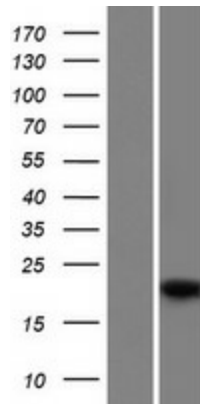
Locus ID: 343930

UniProt ID: [A6NI15](#)

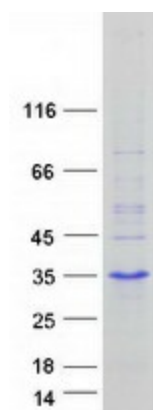
Cytogenetics: 2p24.2
Protein Families: Druggable Genome
MW: 20.6 kDa
Gene Summary: Involved in specifying the paraxial, but not dorsal, mesoderm. May regulate the expression of T-box transcription factors required for mesoderm formation and differentiation (By similarity).[UniProtKB/Swiss-Prot Function]

Product images:


Circular map for RC225212



Western blot validation of overexpression lysate (Cat# [LY426279]) using anti-DDK antibody (Cat# [TA50011-100]). Left: Cell lysates from untransfected HEK293T cells; Right: Cell lysates from HEK293T cells transfected with RC225212 using transfection reagent MegaTran 2.0 (Cat# [TT210002]).



Coomassie blue staining of purified MSGN1 protein (Cat# [TP325212]). The protein was produced from HEK293T cells transfected with MSGN1 cDNA clone (Cat# RC225212) using MegaTran 2.0 (Cat# [TT210002]).