

Product datasheet for RC225210

CYHR1 (NM_001129888) Human Tagged ORF Clone

Product data:

Product Type: Expression Plasmids
Product Name: CYHR1 (NM_001129888) Human Tagged ORF Clone
Tag: Myc-DDK
Symbol: CYHR1
Synonyms: CHRP
Mammalian Cell Selection: Neomycin
Vector: pCMV6-Entry (PS100001)
E. coli Selection: Kanamycin (25 ug/mL)
ORF Nucleotide Sequence: >RC225210 ORF sequence
 Red=Cloning site Blue=ORF Green=Tags(s)

TTTTGTAATACGACTCACTATAGGGCGCCGGGAATTCGTCGACTGGATCCGGTACCGAGGAGATCTGCC
 GCCCGCATCGCC

ATGGCCCCAAGCCGGGGCCGAGTGGAGCACAGCCCTGTCCCATCTGGTGCTGGGAGTGGTGTCTCTGC
 ACGCAGCCGTGAGCACAGCCGAGGCAAGTCGAGGGGCTGCTGCTGGCTTCTGCTCCAGGCTTGGCTGC
 CACCACCAGCTGGCCCCAGGGCTGAGCACACATGAAGACTGCCTTGCTGGAGCCTGGTGGCCACCGTC
 ATCGGCCCTCCCTTCTGGCCTTCGATTCCACTGGGTGAATGGGACCGCTCCTCTGCCAACCTGCTCC
 TGGGAGGAGGCATGGTGTGGCAGTGGCTGGCGGCCACCTCGGCCCTGAGGGCCGCTCTGTGGCTGGTCA
 GGCAATGCTGTTGGTGGTCGAGTGACCATCCTCATTGTAGTGTCTTACGGCCAACTTATGGGATG
 TGGGGGGGGCGATGCTGGGTGTGGCAGGCCTCCTGAGCCGGCTGGAGGAGGACAGGCTGCTGCTGCTAC
 CGAAGGAGGATGTCTGTGCTGGCCTTGCTGTAGGCAGCTGGGCTTACTGCCGGGCCCTGCATACACA
 GCGCCTCCAGTGGGAG

ACGCGTACGCGGCCGCTCGAGCAGAACTCATCTCAGAAGAGGATCTGGCAGCAATGATATCCTGGATT
 ACAAGGATGACGACGATAAGGTTTAA

Protein Sequence: >RC225210 protein sequence
 Red=Cloning site Green=Tags(s)

MAPKPGAEWSTALSHLVGVVSLHAAVSTAEASRGAAAGFLLQVLAATTTLAPGLSTHEDCLAGAWVATV
 IGLPLLAFDFHWVNGDRSSANLLLGGMVLAVAGGHLGPEGRSVAGQAMLLVVAVTILIVAVFTANTYGM
 WGGAMLGVAGLLSRLEEDRLLLLPKEDVCRWALAVGSWAYCRALHTQRLQWE

TRTRPLEQKLISEEDLAANDILDYKDDDDKV



[View online »](#)

Chromatograms: https://cdn.origene.com/chromatograms/mk6144_e07.zip

Restriction Sites: SgfI-MluI

Cloning Scheme:



ACCN: NM_001129888

ORF Size: 576 bp

OTI Disclaimer: The molecular sequence of this clone aligns with the gene accession number as a point of reference only. However, individual transcript sequences of the same gene can differ through naturally occurring variations (e.g. polymorphisms), each with its own valid existence. This clone is substantially in agreement with the reference, but a complete review of all prevailing variants is recommended prior to use. [More info](#)

OTI Annotation: This clone was engineered to express the complete ORF with an expression tag. Expression varies depending on the nature of the gene.

Components: The ORF clone is ion-exchange column purified and shipped in a 2D barcoded Matrix tube containing 10ug of transfection-ready, dried plasmid DNA (reconstitute with 100 ul of water).

Reconstitution Method:

1. Centrifuge at 5,000xg for 5min.
2. Carefully open the tube and add 100ul of sterile water to dissolve the DNA.
3. Close the tube and incubate for 10 minutes at room temperature.
4. Briefly vortex the tube and then do a quick spin (less than 5000xg) to concentrate the liquid at the bottom.
5. Store the suspended plasmid at -20°C. The DNA is stable for at least one year from date of shipping when stored at -20°C.

RefSeq: [NM_001129888.1](#), [NP_001123360.1](#)

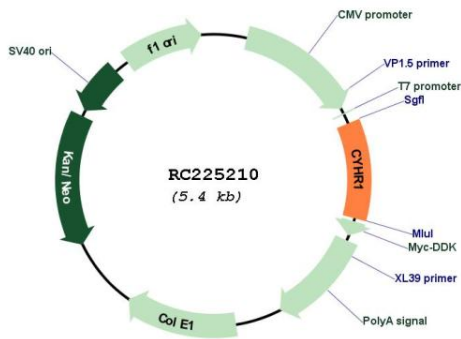
RefSeq Size: 1176 bp

RefSeq ORF: 579 bp

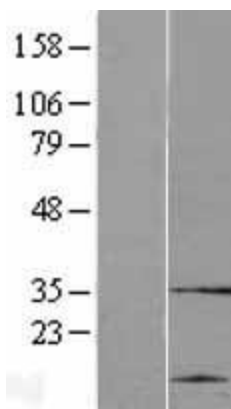
Locus ID: 50626

UniProt ID: [Q6ZMK1](#)
 Cytogenetics: 8q24.3
 Protein Families: Transmembrane
 MW: 19.9 kDa

Product images:



Circular map for RC225210



Western blot validation of overexpression lysate (Cat# [LY427072]) using anti-DDK antibody (Cat# [TA50011-100]). Left: Cell lysates from untransfected HEK293T cells; Right: Cell lysates from HEK293T cells transfected with RC225210 using transfection reagent MegaTran 2.0 (Cat# [TT210002]).