

Product datasheet for RC225209

HP1 alpha (CBX5) (NM_001127322) Human Tagged ORF Clone

Product data:

Product Type:	Expression Plasmids
Product Name:	HP1 alpha (CBX5) (NM_001127322) Human Tagged ORF Clone
Tag:	Myc-DDK
Symbol:	HP1 alpha
Synonyms:	HEL25; HP1; HP1A
Mammalian Cell Selection:	Neomycin
Vector:	pCMV6-Entry (PS100001)
E. coli Selection:	Kanamycin (25 ug/mL)
ORF Nucleotide Sequence:	>RC225209 ORF sequence Red=Cloning site Blue=ORF Green=Tags(s)

TTTGTGTAATACGACTCACTATAGGGCGGCCGGAATTCGTCGACTGGATCCGGTACCGAGGAGATCTGCC
 GCCCGCATCGCC

ATGGGAAAGAAAACCAAGCGGACAGCTGACAGTCTTCTTCAGAGGATGAGGAGGAGTATGTTGTGGAGA
 AGGTGCTAGACAGGCGCGTGGTTAAGGGACAAGTGAATATCTACTGAAGTGAAAGGCTTTTCTGAGGA
 GCACAATACTTGGGAACCTGAGAAAACTTGGATTGCCCTGAGCTAATTTCTGAATTTATGAAAAAGTAT
 AAGAAGATGAAGGAGGTGAAAAATAATAAACCCAGGGAGAAGTCAGAAAGTAACAAGAGGAAATCCAATT
 TCTCAACAGTGCCGATGACATCAAATCTAAAAAAGAGAGAGCAGAGCAATGATATCGCTCGGGGCTT
 TGAGAGAGGACTGGAACAGAAAAGATCATTGGGGCAACAGATTCTGTGGTGATTTAATGTTCTTAATG
 AAATGGAAAGACACAGATGAAGCTGACCTGGTTCTTGCAAAAGAAGCTAATGTGAAATGTCCACAAATTG
 TGATAGCATTTTATGAAGAGAGACTGACATGGCATGCATATCCTGAGGATGCGGAAAACAAAGAGAAAGA
 AACAGCAAAGAGC

ACGCGTACGCGGCCGCTCGAGCAGAACTCATCTCAGAAGAGGATCTGGCAGCAATGATATCCTGGATT
 ACAAGGATGACGACGATAAGGTTTAA

Protein Sequence:	>RC225209 protein sequence Red=Cloning site Green=Tags(s)
-------------------	--

MGKKTTRTADSSSEDEEEYVVEKVLDRRVKQVEYLLKWKGFSEEHNTWEPEKNLDCPELISEFMKKY
 KKMKEGENNKPRESSESNKRKSNFSNSADDIKSKKKREQSNDIARGFERGLEPEKIIIGATDSCGDLMLM
 KWKDTDEADLVLAKEANVKCPQIVIAFYEEERLTWHAYPEDAENKEKETAKS

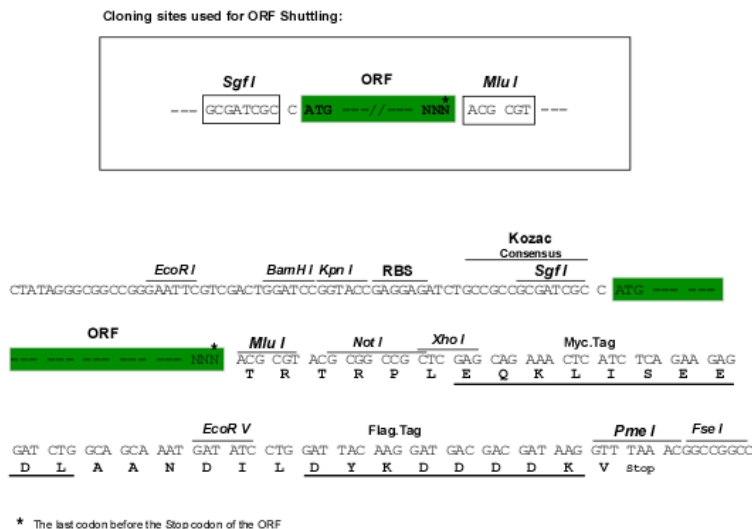
TRTRPLEQKLISEEDLAANDILDYKDDDDKV


[View online »](#)

Chromatograms: https://cdn.origene.com/chromatograms/mk6014_e01.zip

Restriction Sites: SgfI-MluI

Cloning Scheme:



ACCN: NM_001127322

ORF Size: 573 bp

OTI Disclaimer: The molecular sequence of this clone aligns with the gene accession number as a point of reference only. However, individual transcript sequences of the same gene can differ through naturally occurring variations (e.g. polymorphisms), each with its own valid existence. This clone is substantially in agreement with the reference, but a complete review of all prevailing variants is recommended prior to use. [More info](#)

OTI Annotation: This clone was engineered to express the complete ORF with an expression tag. Expression varies depending on the nature of the gene.

Components: The ORF clone is ion-exchange column purified and shipped in a 2D barcoded Matrix tube containing 10ug of transfection-ready, dried plasmid DNA (reconstitute with 100 ul of water).

Reconstitution Method:

1. Centrifuge at 5,000xg for 5min.
2. Carefully open the tube and add 100ul of sterile water to dissolve the DNA.
3. Close the tube and incubate for 10 minutes at room temperature.
4. Briefly vortex the tube and then do a quick spin (less than 5000xg) to concentrate the liquid at the bottom.
5. Store the suspended plasmid at -20°C. The DNA is stable for at least one year from date of shipping when stored at -20°C.

RefSeq: [NM_001127322.1](#), [NP_001120794.1](#)

RefSeq Size: 11723 bp

RefSeq ORF: 576 bp

Locus ID: 23468

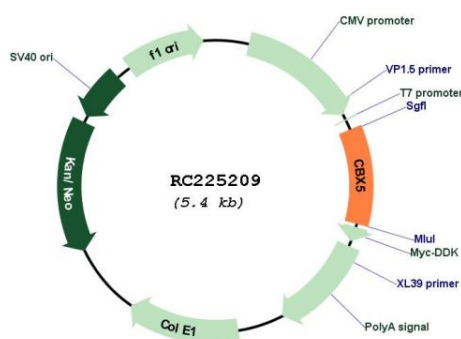
UniProt ID: [P45973](#)

Cytogenetics: 12q13.13

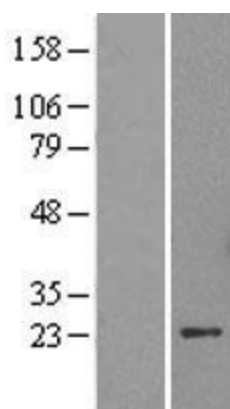
MW: 22.2 kDa

Gene Summary: This gene encodes a highly conserved nonhistone protein, which is a member of the heterochromatin protein family. The protein is enriched in the heterochromatin and associated with centromeres. The protein has a single N-terminal chromodomain which can bind to histone proteins via methylated lysine residues, and a C-terminal chromo shadow-domain (CSD) which is responsible for the homodimerization and interaction with a number of chromatin-associated nonhistone proteins. The encoded product is involved in the formation of functional kinetochore through interaction with essential kinetochore proteins. The gene has a pseudogene located on chromosome 3. Multiple alternatively spliced variants, encoding the same protein, have been identified. [provided by RefSeq, Jul 2008]

Product images:



Circular map for RC225209



Western blot validation of overexpression lysate (Cat# [LY426745]) using anti-DDK antibody (Cat# [TA50011-100]). Left: Cell lysates from untransfected HEK293T cells; Right: Cell lysates from HEK293T cells transfected with RC225209 using transfection reagent MegaTran 2.0 (Cat# [TT210002]).