

## Product datasheet for RC225204

### PHR1 (PLEKHB1) (NM\_001130035) Human Tagged ORF Clone

#### Product data:

**Product Type:** Expression Plasmids  
**Product Name:** PHR1 (PLEKHB1) (NM\_001130035) Human Tagged ORF Clone  
**Tag:** Myc-DDK  
**Symbol:** PHR1  
**Synonyms:** KPL1; PHR1; PHRET1  
**Mammalian Cell Selection:** Neomycin  
**Vector:** pCMV6-Entry (PS100001)  
**E. coli Selection:** Kanamycin (25 ug/mL)  
**ORF Nucleotide Sequence:** >RC225204 representing NM\_001130035  
 Red=Cloning site Blue=ORF Green=Tags(s)

TTTTGTAATACGACTCACTATAGGGCGGCCGGAATTCGTCGACTGGATCCGGTACCGAGGAGATCTGCC  
 GCCCGATCGCC

ATGGCCCTGGTGAGGGGGCGGCTGGCTGTGGAGACAGAGCTCCATCCTCCGCCGCTGGAAGCGGAAGTGGT  
 TTGCCCTGTGGCTGGACGGGACCCTGGGATACTACCACGATGAGACAGCGCAGGACGAGGAGGACCGTGT  
 GCTCATCCACTTCAATGTCGGTACATAAAGATCGGCCAGAGTGCCATGATGTGCACCCCCAGAGGGC  
 CGGAGCCGAGATGGCCTGCTGACTGTGAACCTACGGGAAGGCGGCCGCTGCACCTCTGTGCGGAGACCA  
 AGGATGATGCCCTAGCATGGAAGACAGCACTGCTGGAGGCAAATCCACCCGGTGGCGTCTACAGCCC  
 GTACCAAGACTACTACGAGGTGGTGCCCCCAATGCACACGAGGCCACGTATGTCCGCAGCTACTACGGA  
 CCGCCCTACGCAGGCCCTGGCGTGACGCACGTGATAGTGCGGGAGGATCCCTGCTACAGCGCCGGCGCCC  
 CTCTGGCCATGGGCATGCTTGGGGAGCCGCACTGGGGCGGCGCTGGGCTCGCTCATGTGGTCCGCTG  
 CTGGTTC

ACGCGTACGCGGCCGCTCGAGCAGAACTCATCTCAGAAGAGGATCTGGCAGCAAATGATATCCTGGATT  
 ACAAGGATGACGACGATAAGGTTTAA

**Protein Sequence:** >RC225204 representing NM\_001130035  
 Red=Cloning site Green=Tags(s)

MALVRGGWLWRQSSILRRWKRNFALWLDGTLGYHDETAQDEEDRVL IHFNVRIKIGPECHDVQPPEG  
 RSRDGLLTVNLRGGRLHLCAETKDDALAWKTALLEANSTPVRVYSPYQDYEVVPPNAHEATYVRSYYG  
 PPYAGPGVTHVIVREDPCYSAGAPLAMGMLAGAATGAALGSLMWSPCWF

TRTRPLEQKLISEEDLAANDILDYKDDDDKV



[View online »](#)

**Chromatograms:** [https://cdn.origene.com/chromatograms/ja1451\\_b07.zip](https://cdn.origene.com/chromatograms/ja1451_b07.zip)

**Restriction Sites:** SgfI-MluI

**Cloning Scheme:**



**ACCN:** NM\_001130035

**ORF Size:** 567 bp

**OTI Disclaimer:** The molecular sequence of this clone aligns with the gene accession number as a point of reference only. However, individual transcript sequences of the same gene can differ through naturally occurring variations (e.g. polymorphisms), each with its own valid existence. This clone is substantially in agreement with the reference, but a complete review of all prevailing variants is recommended prior to use. [More info](#)

**OTI Annotation:** This clone was engineered to express the complete ORF with an expression tag. Expression varies depending on the nature of the gene.

**Components:** The ORF clone is ion-exchange column purified and shipped in a 2D barcoded Matrix tube containing 10ug of transfection-ready, dried plasmid DNA (reconstitute with 100 ul of water).

**Reconstitution Method:**

1. Centrifuge at 5,000xg for 5min.
2. Carefully open the tube and add 100ul of sterile water to dissolve the DNA.
3. Close the tube and incubate for 10 minutes at room temperature.
4. Briefly vortex the tube and then do a quick spin (less than 5000xg) to concentrate the liquid at the bottom.
5. Store the suspended plasmid at -20°C. The DNA is stable for at least one year from date of shipping when stored at -20°C.

**RefSeq:** [NM\\_001130035.2](#)

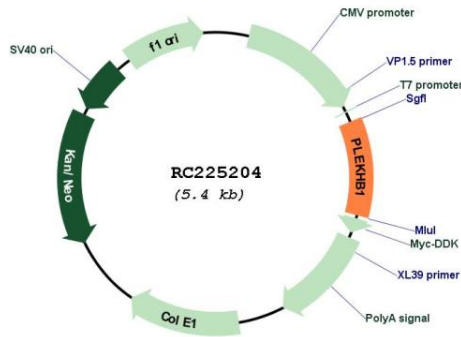
**RefSeq ORF:** 570 bp

**Locus ID:** 58473

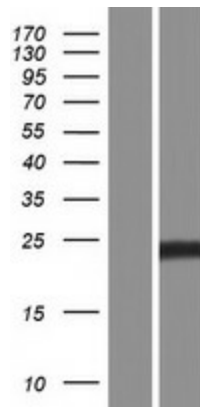
**UniProt ID:** [Q9UF11](#)

Cytogenetics: 11q13.4  
 MW: 21.1 kDa

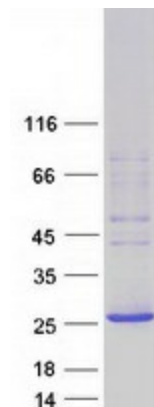
**Product images:**



Circular map for RC225204



Western blot validation of overexpression lysate (Cat# [LY427118]) using anti-DDK antibody (Cat# [TA50011-100]). Left: Cell lysates from untransfected HEK293T cells; Right: Cell lysates from HEK293T cells transfected with RC225204 using transfection reagent MegaTran 2.0 (Cat# [TT210002]).



Coomassie blue staining of purified PLEKHB1 protein (Cat# [TP325204]). The protein was produced from HEK293T cells transfected with PLEKHB1 cDNA clone (Cat# RC225204) using MegaTran 2.0 (Cat# [TT210002]).