

Product datasheet for **RC225196**

MAGP1 (MFAP2) (NM_001135247) Human Tagged ORF Clone

Product data:

Product Type: Expression Plasmids
Product Name: MAGP1 (MFAP2) (NM_001135247) Human Tagged ORF Clone
Tag: Myc-DDK
Symbol: MAGP1
Synonyms: MAGP; MAGP-1; MAGP1
Mammalian Cell Selection: Neomycin
Vector: pCMV6-Entry (PS100001)
E. coli Selection: Kanamycin (25 ug/mL)
ORF Nucleotide Sequence: >RC225196 representing NM_001135247
Red=Cloning site Blue=ORF Green=Tags(s)

TTTTGTAATACGACTCACTATAGGGCGGCCGGAATTCGTCGACTGGATCCGGTACCGAGGAGATCTGCC
GCC**CGATCGCC**

ATGAGAGCTGCCTACCTCTTCTGCTATTCTGCCTGCAGGCTTGGCTCAGGGCCAGTATGACCTGG
ACCCGCTGCCCGCTTCCTGACCACGTCCAGTACCCACTATAGCGACCAGATCGACAACCCAGACTA
CTATGATTATCAAGAGGTGACTCCTCGGCCCTCCGAGGAACAGTCCAGTCCAGTCCCAGCAGCAAGTC
CAACAGGAAGTCATCCCAGCCCCAACCCAGAACCAGAAATGCAGAGCTGGAGCCACAGAGCCTGGGC
CTTTGACTGCCGTGAGAACAGTACCCGTGCACCCGCCTCTACTCCATACACAGGCCTGCAAACAGTG
TCTCAACGAGGTCTGCTTCTACAGCCTCCGCCGTGTACGTATTAACAAGGAGATCTGTGTTCTGTACA
GTGTGTGCCACGAGGAGCTCCTCCGAGCTGACCTCTGTCCGGACAAGTTCTCCAATGTGGCGTGATGG
CCAGCAGCGGCCTGTGCCAATCCGTGGCGGCCTCTGTGCCAGGAGCTGTGGGAGCTGC

ACGCGTACGCGGCCGCTCGAGCAGAACTCATCTCAGAAGAGGATCTGGCAGCAAATGATATCCTGGATT
ACAAGGATGACGACGATAAGGTTTAA

Protein Sequence: >RC225196 representing NM_001135247
Red=Cloning site Green=Tags(s)

MRAAYLFLLFLPAGLLAQGQYDLDPFPFDPHVQYTHYSDQIDNPDYDYQEVTPRPSEEQFQFQSQQQV
QQEVIPAPTPEPGNAELEPTEPGPLDCREEQYPCTRLYSIHRPCKQCLNEVCFYSLRRVYVINKEICVRT
VCAHEELLRADLCRDKFSKCGVMASGLCQSVAAASCARSCGSC

TRTRPLEQKLISEEDLAANDILDYKDDDDKV

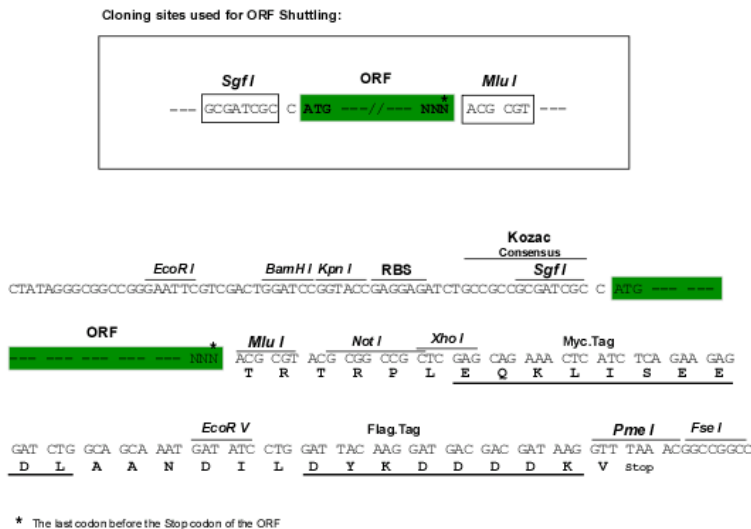
Chromatograms: https://cdn.origene.com/chromatograms/ja1465_f05.zip



[View online »](#)

Restriction Sites: SgfI-MluI

Cloning Scheme:



ACCN: NM_001135247

ORF Size: 549 bp

OTI Disclaimer: The molecular sequence of this clone aligns with the gene accession number as a point of reference only. However, individual transcript sequences of the same gene can differ through naturally occurring variations (e.g. polymorphisms), each with its own valid existence. This clone is substantially in agreement with the reference, but a complete review of all prevailing variants is recommended prior to use. [More info](#)

OTI Annotation: This clone was engineered to express the complete ORF with an expression tag. Expression varies depending on the nature of the gene.

Components: The ORF clone is ion-exchange column purified and shipped in a 2D barcoded Matrix tube containing 10ug of transfection-ready, dried plasmid DNA (reconstitute with 100 ul of water).

Reconstitution Method:

1. Centrifuge at 5,000xg for 5min.
2. Carefully open the tube and add 100ul of sterile water to dissolve the DNA.
3. Close the tube and incubate for 10 minutes at room temperature.
4. Briefly vortex the tube and then do a quick spin (less than 5000xg) to concentrate the liquid at the bottom.
5. Store the suspended plasmid at -20°C. The DNA is stable for at least one year from date of shipping when stored at -20°C.

RefSeq: [NM_001135247.1](#), [NP_001128719.1](#)

RefSeq ORF: 549 bp

Locus ID: 4237

UniProt ID: [P55001](#)

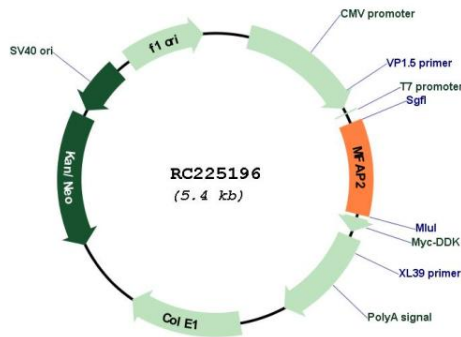
Cytogenetics: 1p36.13

Protein Families: Secreted Protein

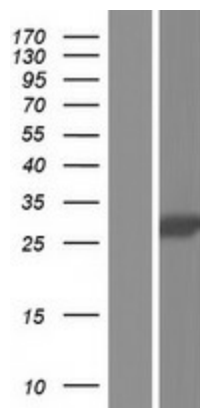
MW: 20.83 kDa

Gene Summary: Microfibrillar-associated protein 2 is a major antigen of elastin-associated microfibrils and a candidate for involvement in the etiology of inherited connective tissue diseases. Four transcript variants encoding two different isoforms have been found for this gene. [provided by RefSeq, Sep 2008]

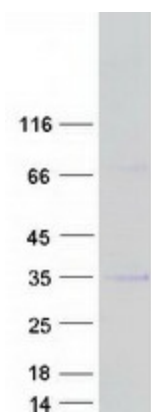
Product images:



Circular map for RC225196



Western blot validation of overexpression lysate (Cat# [LY427608]) using anti-DDK antibody (Cat# [TA50011-100]). Left: Cell lysates from untransfected HEK293T cells; Right: Cell lysates from HEK293T cells transfected with RC225196 using transfection reagent MegaTran 2.0 (Cat# [TT210002]).



Coomassie blue staining of purified MFAP2 protein (Cat# [TP325196]). The protein was produced from HEK293T cells transfected with MFAP2 cDNA clone (Cat# RC225196) using MegaTran 2.0 (Cat# [TT210002]).