

Product datasheet for RC225194

TMEM87A (NM_001110503) Human Tagged ORF Clone

Product data:

Product Type: Expression Plasmids
Product Name: TMEM87A (NM_001110503) Human Tagged ORF Clone
Tag: Myc-DDK
Symbol: TMEM87A
Mammalian Cell Selection: Neomycin
Vector: pCMV6-Entry (PS100001)
E. coli Selection: Kanamycin (25 ug/mL)
ORF Nucleotide Sequence: >RC225194 representing NM_001110503
 Red=Cloning site Blue=ORF Green=Tags(s)

TTTTGTAATACGACTCACTATAGGGCGGCCGGAATTCGTCGACTGGATCCGGTACCGAGGAGATCTGCC
 GCCCGATCGCC

ATGGCGGCGGCTGCGTGGCTTCAGGTGTTGCCTGTCATTCTTCTGCTTCTGGGAGCTCACCCGTCACCAC
 TGTCTTTTTTCAGTGCAGGACCGCAACCGTAGCTGCTGCCGACCGGTCCAAATGGCACATTCGGATACC
 GTCGGGAAAAATATTTTAGTTTTGGAAAGATCCTCTTCAGAAATACCACTATCTTCTGAAGTTTGT
 GGAGAACCTTGTGACCTGCTTTGAATATAACCTGGTATCTGAAAAGCGCTGATTGTTACAATGAAATCT
 ATAACTCAAGGCAGAAGAAGTAGAGTTGATTTGGAAAACTAAGGAAAAAGAGGCTTGTCTGGGAA
 ATATCAAACATCATCAAATTGTTCCAGAACTGCAGTGAATCTTTAAAACACAGACCTTTTCTGGAGAT
 TTTATGCATCGACTGCCTCTTTTAGGAGAAAAACAGGAGGCTAAGGAGAATGGAACAAACCTTACCTTTA
 TTGGAGACAAAACCATTAGATGCCTTTCTTGAAGAAACATTTCTGGATTGT

ACGCGTACGCGGCCGCTCGAGCAGAACTCATCTCAGAAGAGGATCTGGCAGCAATGATATCCTGGATT
 ACAAGGATGACGACGATAAGGTTTAA

Protein Sequence: >RC225194 representing NM_001110503
 Red=Cloning site Green=Tags(s)

MAAAWLQVLPVILLLLGAHPSPLSFFSAGPATVAAADRSKWHIPIPSGKNYFSGKILFRNTTIFLKF
 GEPCDLSLNIWYLSADCYNEIYNFKAEEVELYLEKLKEKRLSGKYQTSSKLFQNCSELFKTQTFSGD
 FMHRLPLLGEKQEAENGNTLTFIGDKTIQMPFLKKHFLDC

TRTRPLEQKLI SEEDLAANDILDYKDDDDKV

Chromatograms: https://cdn.origene.com/chromatograms/mk8006_a10.zip

Restriction Sites: Sgfl-Mlul



[View online >](#)

Cloning Scheme:


ACCN: NM_001110503

ORF Size: 543 bp

OTI Disclaimer: The molecular sequence of this clone aligns with the gene accession number as a point of reference only. However, individual transcript sequences of the same gene can differ through naturally occurring variations (e.g. polymorphisms), each with its own valid existence. This clone is substantially in agreement with the reference, but a complete review of all prevailing variants is recommended prior to use. [More info](#)

OTI Annotation: This clone was engineered to express the complete ORF with an expression tag. Expression varies depending on the nature of the gene.

Components: The ORF clone is ion-exchange column purified and shipped in a 2D barcoded Matrix tube containing 10ug of transfection-ready, dried plasmid DNA (reconstitute with 100 ul of water).

Reconstitution Method:

1. Centrifuge at 5,000xg for 5min.
2. Carefully open the tube and add 100ul of sterile water to dissolve the DNA.
3. Close the tube and incubate for 10 minutes at room temperature.
4. Briefly vortex the tube and then do a quick spin (less than 5000xg) to concentrate the liquid at the bottom.
5. Store the suspended plasmid at -20°C. The DNA is stable for at least one year from date of shipping when stored at -20°C.

RefSeq: [NM_001110503.2](#), [NP_001103973.1](#)

RefSeq ORF: 546 bp

Locus ID: 25963

UniProt ID: [Q8NBN3](#)

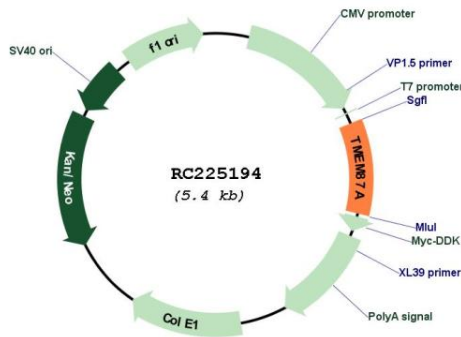
Cytogenetics: 15q15.1

Protein Families: Druggable Genome, Transmembrane

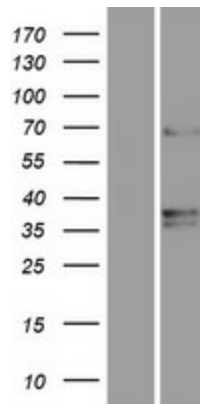
MW: 20.3 kDa

Gene Summary: May be involved in retrograde transport from endosomes to the trans-Golgi network (TGN).
[UniProtKB/Swiss-Prot Function]

Product images:



Circular map for RC225194



Western blot validation of overexpression lysate (Cat# [LY426326]) using anti-DDK antibody (Cat# [TA50011-100]). Left: Cell lysates from untransfected HEK293T cells; Right: Cell lysates from HEK293T cells transfected with RC225194 using transfection reagent MegaTran 2.0 (Cat# [TT210002]).