

Product datasheet for **RC225189**

KLLN (NM_001126049) Human Tagged ORF Clone

Product data:

Product Type: Expression Plasmids
Product Name: KLLN (NM_001126049) Human Tagged ORF Clone
Tag: Myc-DDK
Symbol: KLLN
Synonyms: CWS4; KILLIN
Mammalian Cell Selection: Neomycin
Vector: pCMV6-Entry (PS100001)
E. coli Selection: Kanamycin (25 ug/mL)
ORF Nucleotide Sequence: >RC225189 representing NM_001126049
Red=Cloning site Blue=ORF Green=Tags(s)

TTTTGTAATACGACTCACTATAGGGCGGCCGGAATTCGTCGACTGGATCCGGTACCGAGGAGATCTGCC
GCC**CGATCGCC**

ATGGATCGCCCGGGCCAGGCTCCGCGCCCCGGCCGACCGTGCACGTTTGGGGTTACCGGTTGAGT
GGAAAGTACGGAACGGTAGGAAGCTGCAGCCCAGCGAGTGGCGGGGCGAGGAGACCTAGGAGGGTTCAA
AAGGAGGTGGAAGGATACACGGGCCACAGTCGGAACACTTTCCGAAGGAGGTACGTTGTCCCTAGTT
GGGGAACTTTCAAATCCCCTCCAGTATAGCTCCGAGGCAAGTCGTTCTTCTTCTTGGCTCGG
GTGCTCTTGCCTGGTGCAGGCAGCGGAACCCCAACCTTCTGCGCCGCGCGGAAACAGGGGCTCGGAC
CAGCCTCCCGAAGGAGCGCTGTCCGGGCTGGCGCTTGGGGAAGTGTACACAAGCACCCACATCCAAAC
ACGTGCCCGCCCTCCCGCCTGCTGGCTGCCCGGATTCTTACAGAACGCGGGGAGAGAGTCCCAAAAC
TGGTGCCACTCCTCGCCTGCTACCTAAGAGCAAGCCAAGGAC

ACGCGTACGCGGCCGCTCGAGCAGAACTCATCTCAGAAGAGGATCTGGCAGCAATGATATCCTGGATT
ACAAGGATGACGACGATAAGGTTTAA

Protein Sequence: >RC225189 representing NM_001126049
Red=Cloning site Green=Tags(s)

MDRPGPGSARPGRTVHVWGYRVEWKVRNGRKLQPSEWAGRGDLGGFKRRWKDTRATVGTTFRRRSRVSLV
GELSKFPLPSDSSGGKSSSFARGALAWCRQRNPNSCAAETGARTSLPKERCGRWRLGNLHKHPPHN
TCPRLPACWLPPILTERGERVPKLVPLLACYPKSKPKD

TRTRPLEQKLISEEDLAANDILDYKDDDDKV

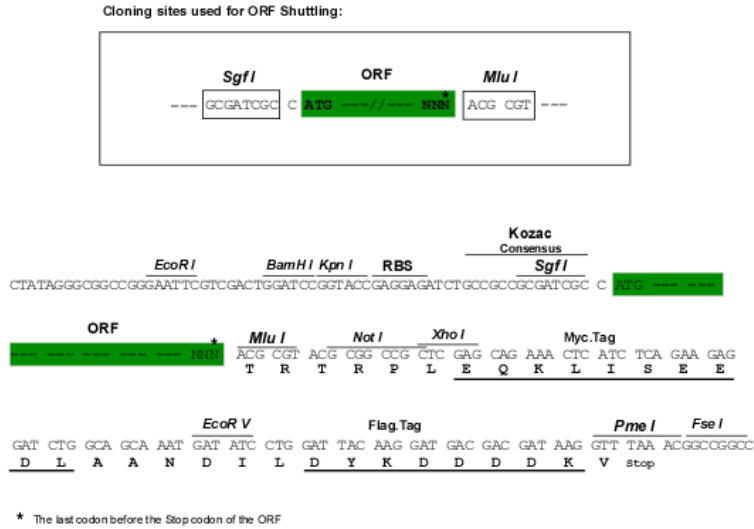
Chromatograms: https://cdn.origene.com/chromatograms/mk8033_c09.zip



[View online »](#)

Restriction Sites: SgfI-MluI

Cloning Scheme:



ACCN: NM_001126049

ORF Size: 534 bp

OTI Disclaimer: The molecular sequence of this clone aligns with the gene accession number as a point of reference only. However, individual transcript sequences of the same gene can differ through naturally occurring variations (e.g. polymorphisms), each with its own valid existence. This clone is substantially in agreement with the reference, but a complete review of all prevailing variants is recommended prior to use. [More info](#)

OTI Annotation: This clone was engineered to express the complete ORF with an expression tag. Expression varies depending on the nature of the gene.

Components: The ORF clone is ion-exchange column purified and shipped in a 2D barcoded Matrix tube containing 10ug of transfection-ready, dried plasmid DNA (reconstitute with 100 ul of water).

Reconstitution Method:

1. Centrifuge at 5,000xg for 5min.
2. Carefully open the tube and add 100ul of sterile water to dissolve the DNA.
3. Close the tube and incubate for 10 minutes at room temperature.
4. Briefly vortex the tube and then do a quick spin (less than 5000xg) to concentrate the liquid at the bottom.
5. Store the suspended plasmid at -20°C. The DNA is stable for at least one year from date of shipping when stored at -20°C.

RefSeq: [NM_001126049.2](#)

RefSeq ORF: 537 bp

Locus ID: 100144748

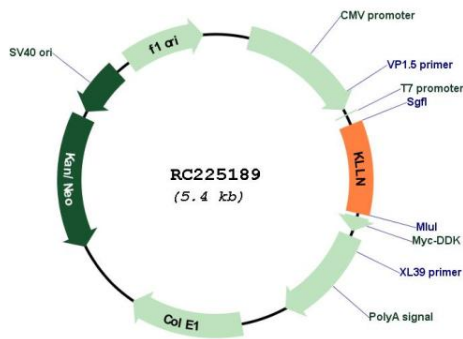
UniProt ID: [B2CW77](#)

Cytogenetics: 10q23.31

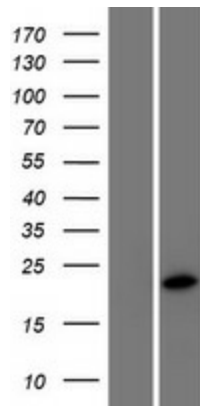
MW: 19.8 kDa

Gene Summary: The protein encoded by this intronless gene is found in the nucleus, where it can inhibit DNA synthesis and promote S phase arrest coupled to apoptosis. The expression of this DNA binding protein is upregulated by transcription factor p53. [provided by RefSeq, Dec 2012]

Product images:



Circular map for RC225189



Western blot validation of overexpression lysate (Cat# [LY426631]) using anti-DDK antibody (Cat# [TA50011-100]). Left: Cell lysates from untransfected HEK293T cells; Right: Cell lysates from HEK293T cells transfected with RC225189 using transfection reagent MegaTran 2.0 (Cat# [TT210002]).