

Product datasheet for **RC225184**

C15orf62 (NM_001130448) Human Tagged ORF Clone

Product data:

Product Type: Expression Plasmids
Product Name: C15orf62 (NM_001130448) Human Tagged ORF Clone
Tag: Myc-DDK
Symbol: C15orf62
Mammalian Cell Selection: Neomycin
Vector: pCMV6-Entry (PS100001)
E. coli Selection: Kanamycin (25 ug/mL)
ORF Nucleotide Sequence: >RC225184 representing NM_001130448
 Red=Cloning site Blue=ORF Green=Tags(s)

TTTTGTAATACGACTCACTATAGGGCGGCCGGGAATTCGTCGACTGGATCCGGTACCGAGGAGATCTGCC
 GCC**CGATCGCC**

ATGGAGACCTGGCGAAAGGCTCCTTCCGCAACGCCTCCTTCTTCAAGCAGCTGAGCCTGGGGCGGCCAC
 GGCGGCTCCGGCGACAGAGTAGTGTGCTTAGCCAGGCCAGCACAGCAGGTGGGGACCACGAGGAGTACAG
 CAACCGAGAAGTCATCCGGGAGCTACAAGGGAGGCCAGATGGCCGGCGCCTGCCACTGTGGGGGACGAG
 CAGCCCCGGGCCACCCTGCTGGCCCCACCAAGCCCCACGCCTCTACCGAGAGAGCTCAAGCTGCCCA
 ACATCCTGGAGCCCCACCTGCCTACACAGCAGCCTACTCTGCCACCCTGCCATCGGCCTCTCTGTGC
 GAGTGGCCTCCACCAGCACTCAGAGAAGGGCCTTGTGGACACTCCCTGCTTCCAGAGGACACCTACCCCA
 GACCTCAGTGATCCCTTCTCTCTTCAAAGTGGACCTGGGGATTCACTTCTTGAGGAAGTTCTGCAGA
 TGCTAAGGGAGCAGTTTCTAGCGAGCCAGCTTC

ACGCGTACGCGGCCGCTCGAGCAGAACTCATCTCAGAAGAGGATCTGGCAGCAATGATATCCTGGATT
 ACAAGGATGACGACGATAAGGTTTAA

Protein Sequence: >RC225184 representing NM_001130448
 Red=Cloning site Green=Tags(s)

METWRKGSFRNASFFKQLSLGRPRRLRRQSSVLSQASTAGGDHHEEYSNREVIRELQGRPDGRRRLPLWGDE
 QPRATLLAPPKPPRLYRESSSCPNILEPPPAYTAAYSATLPSALSLSSALHQHSEKGLVDTPCFQRTPTP
 DLSDFLSFKVDLGISLLEEVQLMLREQFPSEPSF

TRTRPLEQKLISEEDLAANDILDYKDDDDKV

Chromatograms: https://cdn.origene.com/chromatograms/mk8033_c11.zip

Restriction Sites: Sgfl-MluI



[View online »](#)

Cloning Scheme:


ACCN: NM_001130448

ORF Size: 525 bp

OTI Disclaimer: The molecular sequence of this clone aligns with the gene accession number as a point of reference only. However, individual transcript sequences of the same gene can differ through naturally occurring variations (e.g. polymorphisms), each with its own valid existence. This clone is substantially in agreement with the reference, but a complete review of all prevailing variants is recommended prior to use. [More info](#)

OTI Annotation: This clone was engineered to express the complete ORF with an expression tag. Expression varies depending on the nature of the gene.

Components: The ORF clone is ion-exchange column purified and shipped in a 2D barcoded Matrix tube containing 10ug of transfection-ready, dried plasmid DNA (reconstitute with 100 ul of water).

Reconstitution Method:

1. Centrifuge at 5,000xg for 5min.
2. Carefully open the tube and add 100ul of sterile water to dissolve the DNA.
3. Close the tube and incubate for 10 minutes at room temperature.
4. Briefly vortex the tube and then do a quick spin (less than 5000xg) to concentrate the liquid at the bottom.
5. Store the suspended plasmid at -20°C. The DNA is stable for at least one year from date of shipping when stored at -20°C.

RefSeq: [NM_001130448.3](#)

RefSeq ORF: 528 bp

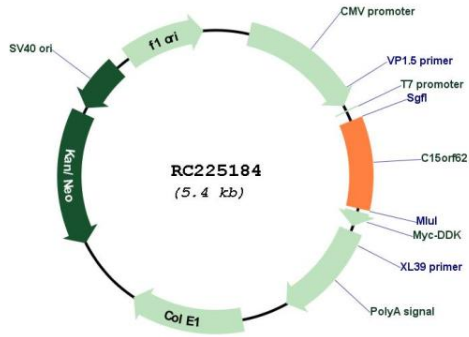
Locus ID: 643338

UniProt ID: [A8K5M9](#)

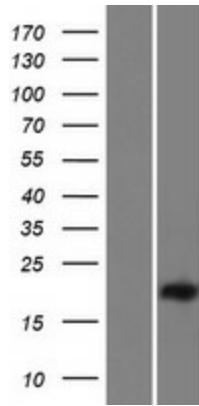
Cytogenetics: 15q15.1

MW: 19.5 kDa

Product images:



Circular map for RC225184



Western blot validation of overexpression lysate (Cat# [LY427214]) using anti-DDK antibody (Cat# [TA50011-100]). Left: Cell lysates from untransfected HEK293T cells; Right: Cell lysates from HEK293T cells transfected with RC225184 using transfection reagent MegaTran 2.0 (Cat# [TT210002]).