

Product datasheet for **RC225182**

CLEC2A (NM_001130711) Human Tagged ORF Clone

Product data:

Product Type: Expression Plasmids
Product Name: CLEC2A (NM_001130711) Human Tagged ORF Clone
Tag: Myc-DDK
Symbol: CLEC2A
Synonyms: INPE5792; KACL; PILAR; UNQ5792
Mammalian Cell Selection: Neomycin
Vector: pCMV6-Entry (PS100001)
E. coli Selection: Kanamycin (25 ug/mL)
ORF Nucleotide Sequence: >RC225182 representing NM_001130711
Red=Cloning site Blue=ORF Green=Tags(s)

TTTTGTAATACGACTCACTATAGGGCGGCCGGAATTCGTCGACTGGATCCGGTACCGAGGAGATCTGCC
GCC**CGATCGCC**

ATGATTAATCCAGAGCTGCGGGATGGCAGAGCTGATGGCTTCATACATCGGATAGTTCCCAAGTTGATAC
AAAAGTGAAGATTGGCCTTATGTGCTTCTGAGTATTATTACTACAGTTTGCATTATTATGATAGC
CACATGGTCCAAGCATGCTAAACCTGTGGCATGTTGAGGGGACTGGCTTGGAGTGAGAGATAAGTGTTC
TATTTTTCTGATGATACCAGAAATTGGACAGCCAGTAAATATTTGTAGTTTCAGAAAGCAGAAGCTTG
CTCAGATTGATACACAAGAAGACATGGAATTTTTGAAGAGGTACGCAGGAAGTATGCACTGGATTGG
ACTAAGCAGGAAACAAGGAGATTCTTGGAAATGGACAAATGGCACCACATTCAATGGTTGGTTTGAATT
ATAGGGAACGGATCCTTTGCTTTCTTGAGTGCTGATGGAGTCCATAGTCCAGAGGATTTATTGATATCA
AGTGGATTTGCAGCAAACCTAAATATTTTTTA

ACGCGTACGCGGCCGCTCGAGCAGAAACTCATCTCAGAAGAGGATCTGGCAGCAAATGATATCCTGGATT
ACAAGGATGACGACGATAAGGTTTAA

Protein Sequence: >RC225182 representing NM_001130711
Red=Cloning site Green=Tags(s)

MINPELRDGRADGF IHRIVPKLIQNWKIGLMCFLSIIITTVCIIMIATWSKHAKPVACSGDWLGVRDKCF
YFSDDRNWTASKIFCSLQKAELAQIDTQEDMEFLKRYAGTDMHWIGLSRKQGDSWKWTNGTTFNWGF
IGNGSFAFLSADGVHSSRGFIDIKWICKPKYFL

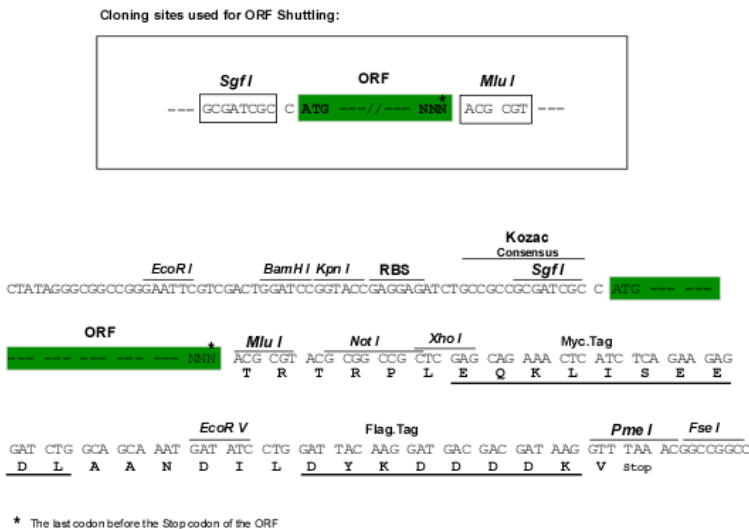
TRTRPLEQKLISEEDLAANDILDYKDDDDKV

Chromatograms: https://cdn.origene.com/chromatograms/mk8033_c12.zip



Restriction Sites: SgfI-MluI

Cloning Scheme:



ACCN: NM_001130711

ORF Size: 522 bp

OTI Disclaimer: The molecular sequence of this clone aligns with the gene accession number as a point of reference only. However, individual transcript sequences of the same gene can differ through naturally occurring variations (e.g. polymorphisms), each with its own valid existence. This clone is substantially in agreement with the reference, but a complete review of all prevailing variants is recommended prior to use. [More info](#)

OTI Annotation: This clone was engineered to express the complete ORF with an expression tag. Expression varies depending on the nature of the gene.

Components: The ORF clone is ion-exchange column purified and shipped in a 2D barcoded Matrix tube containing 10ug of transfection-ready, dried plasmid DNA (reconstitute with 100 ul of water).

Reconstitution Method:

1. Centrifuge at 5,000xg for 5min.
2. Carefully open the tube and add 100ul of sterile water to dissolve the DNA.
3. Close the tube and incubate for 10 minutes at room temperature.
4. Briefly vortex the tube and then do a quick spin (less than 5000xg) to concentrate the liquid at the bottom.
5. Store the suspended plasmid at -20°C. The DNA is stable for at least one year from date of shipping when stored at -20°C.

RefSeq: [NM_001130711.2](#)

RefSeq ORF: 525 bp

Locus ID: 387836

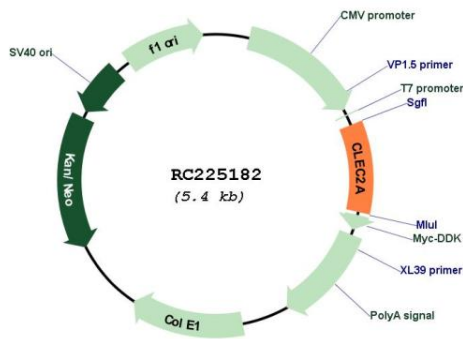
UniProt ID: [Q6UVW9](#)

Cytogenetics: 12p13.31

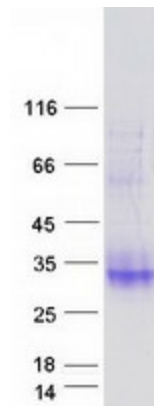
MW: 19.8 kDa

Gene Summary: CLEC2A belongs to the CLEC2 family of activation-induced, natural killer gene complex-encoded C-type lectin-like receptors (Spreu et al., 2007 [PubMed 18046548]).[supplied by OMIM, May 2008]

Product images:



Circular map for RC225182



Coomassie blue staining of purified CLEC2A protein (Cat# [TP325182]). The protein was produced from HEK293T cells transfected with CLEC2A cDNA clone (Cat# RC225182) using MegaTran 2.0 (Cat# [TT210002]).