

Product datasheet for **RC225177**

ARFRP1 (NM_001134758) Human Tagged ORF Clone

Product data:

Product Type: Expression Plasmids
Product Name: ARFRP1 (NM_001134758) Human Tagged ORF Clone
Tag: Myc-DDK
Symbol: ARFRP1
Synonyms: ARL18; ARP; Arp1
Mammalian Cell Selection: Neomycin
Vector: pCMV6-Entry (PS100001)
E. coli Selection: Kanamycin (25 ug/mL)
ORF Nucleotide Sequence: >RC225177 representing NM_001134758
Red=Cloning site Blue=ORF Green=Tags(s)

TTTTGTAATACGACTCACTATAGGGCGGCCGGAATTCGTCGACTGGATCCGGTACCGAGGAGATCTGCC
GCC**CGATCGCC**

ATGTACACGCTGCTGTCGGGCTTGTACAAGTACATGTTTCAGAAGGACGAGTACTGCATCCTGATCCTGG
GCCTGGACAATGCTGGGAAGACGACCTTCTGGAGCAGTCGAAAACCCGATTTAAACAAGAACTACAAGGG
GATGAGTCTATCCAAAATCACCACCACCGTGGGCCTAAACATCGGCACTGTGGATGTGGAAAGGCTCGG
CTCATGTTCTGGACTTAGGAGGGCAGGAAGAGCTGCAGTCTTTGTGGACAAGTATTATCGGGAGTGC
ACGGCGTCATCTACGTCATTGACTCCACCGACGAGGAGAGGCTGGCTGAGTCCAAGCAGGCGTTTGAGAA
GGTGGTGACCAGCGAGGGCTGTGCGGTGTCCCGTCTTGGTGTGGCCAACAAGCAGGATGTGGAGACG
TGCCCTCAATCCCTGACATCAAGACGGCCTTCAGCGACTGCACCAGCAAGATCGGCAGGCGAGATTGCC
TGACCCAGGCCTGCTCGGCCCTCACAGGG

ACGCGTACGCGGCCGCTCGAGCAGAACTCATCTCAGAAGAGGATCTGGCAGCAAATGATATCCTGGATT
ACAAGGATGACGACGATAAGGTTTAA

Protein Sequence: >RC225177 representing NM_001134758
Red=Cloning site Green=Tags(s)

MYTLLSGLYKYMFKDEYICILILGLDNAGKTFLEQSKTRFNKNYKMSLSKITTTVGLNIGTVDVGKAR
LMFWDLGGQEELQSLWDKYAACHGVIYVIDSTDEERLAESKQAFKVVVTSEALCGVPVLVLANKQDVET
CLSIPIKTAFSCTSKIGRRDCLTQACSALTG

TRTRPLEQKLISEEDLAANDILDYKDDDDKV

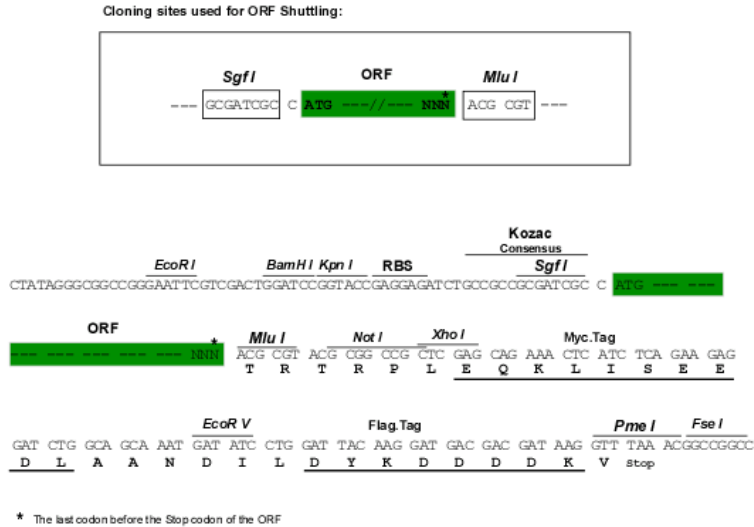
Chromatograms: https://cdn.origene.com/chromatograms/ja1457_d01.zip



[View online »](#)

Restriction Sites: SgfI-MluI

Cloning Scheme:



ACCN: NM_001134758

ORF Size: 519 bp

OTI Disclaimer: The molecular sequence of this clone aligns with the gene accession number as a point of reference only. However, individual transcript sequences of the same gene can differ through naturally occurring variations (e.g. polymorphisms), each with its own valid existence. This clone is substantially in agreement with the reference, but a complete review of all prevailing variants is recommended prior to use. [More info](#)

OTI Annotation: This clone was engineered to express the complete ORF with an expression tag. Expression varies depending on the nature of the gene.

Components: The ORF clone is ion-exchange column purified and shipped in a 2D barcoded Matrix tube containing 10ug of transfection-ready, dried plasmid DNA (reconstitute with 100 ul of water).

Reconstitution Method:

1. Centrifuge at 5,000xg for 5min.
2. Carefully open the tube and add 100ul of sterile water to dissolve the DNA.
3. Close the tube and incubate for 10 minutes at room temperature.
4. Briefly vortex the tube and then do a quick spin (less than 5000xg) to concentrate the liquid at the bottom.
5. Store the suspended plasmid at -20°C. The DNA is stable for at least one year from date of shipping when stored at -20°C.

RefSeq: [NM_001134758.4](#)

RefSeq ORF: 522 bp

Locus ID: 10139

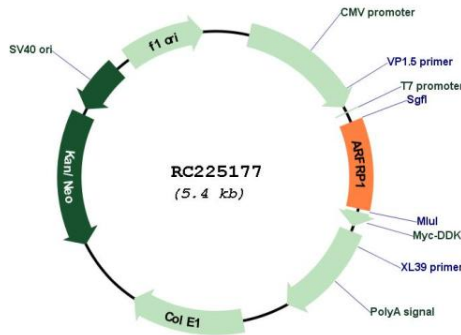
UniProt ID: [Q13795](#)

Cytogenetics: 20q13.33

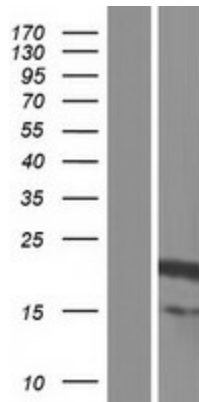
MW: 19.1 kDa

Gene Summary: The protein encoded by this gene is a membrane-associated GTP-ase which localizes to the plasma membrane and is related to the ADP-ribosylation factor (ARF) and ARF-like (ARL) proteins. This gene plays a role in membrane trafficking between the trans-Golgi network and endosomes. Alternatively spliced transcript variants encoding different isoforms have been identified. [provided by RefSeq, May 2012]

Product images:



Circular map for RC225177



Western blot validation of overexpression lysate (Cat# [LY427485]) using anti-DDK antibody (Cat# [TA50011-100]). Left: Cell lysates from untransfected HEK293T cells; Right: Cell lysates from HEK293T cells transfected with RC225177 using transfection reagent MegaTran 2.0 (Cat# [TT210002]).