

Product datasheet for **RC225176**

CDKN3 (NM_001130851) Human Tagged ORF Clone

Product data:

Product Type: Expression Plasmids
Product Name: CDKN3 (NM_001130851) Human Tagged ORF Clone
Tag: Myc-DDK
Symbol: CDKN3
Synonyms: CDI1; CIP2; KAP; KAP1
Mammalian Cell Selection: Neomycin
Vector: pCMV6-Entry (PS100001)
E. coli Selection: Kanamycin (25 ug/mL)
ORF Nucleotide Sequence: >RC225176 representing NM_001130851
Red=Cloning site Blue=ORF Green=Tags(s)

TTTTGTAATACGACTCACTATAGGGCGGCCGGAATTCGTCGACTGGATCCGGTACCGAGGAGATCTGCC
GCC**CGATCGCC**

ATGAAGCCGCCAGTTCAATACAAACAAGTTGTAATTTAAAGATGTTAGAAGAAATGTCCAAAAGATA
CAGAAGAATAAAGAGCTGTGGTATACAAGACATATTTGTTTTCTGCACCAGAGGGGAAGTGTCAAATA
TAGAGTCCAAACCTTCTGGATCTCTACCAGCAATGTGGAATTACACCCATCATCATCAATCGCAGAT
GGAGGACTCCTGACATAGCCAGCTGCTGTGAAATAATGGAAGAGCTTACAACCTGCCTAAAAATTACC
GAAAAACCTTAATACTGCTATGGAGGACTTGGGAGATCTTGCTTGTAGCTGCTGTCTCCTACTATA
CCTGTCTGACACAATATCACCAGAGCAAGCCATAGACAGCCTGCGAGACCTAAGAGGATCCGGGGCAATA
CAGACCATCAAGCAATACAATTATCTTCATGAGTTTCGGGACAAATTAGCTGCACATCTATCATCAAGAG
ATTCACAATCAAGATCTGTATCAAGA

ACGCGTACGCGGCCGCTCGAGCAGAACTCATCTCAGAAGAGGATCTGGCAGCAAATGATATCCTGGATT
ACAAGGATGACGACGATAAGGTTTAA

Protein Sequence: >RC225176 representing NM_001130851
Red=Cloning site Green=Tags(s)

MKPPSSIQTSCFKDVRNRVQKDTEELKSCGIQDIFVFCTRGELSKYRVPNLLDL YQQCGIITHHPIAD
GGTPDIIASCEIMEELTTCLKNYRKL IHCYGGGLGRSCLVAACLLLYLSDTISPEQAIDSLRDLRGS
GAI QTIKQYNYLHEFRDKLAAHLSSRDSQRSVSR

TRTRPLEQKLISEEDLAANDILDYKDDDDKV

Chromatograms: https://cdn.origene.com/chromatograms/ja1427_b08.zip



Restriction Sites: SgfI-MluI

Cloning Scheme:



ACCN: NM_001130851

ORF Size: 516 bp

OTI Disclaimer: The molecular sequence of this clone aligns with the gene accession number as a point of reference only. However, individual transcript sequences of the same gene can differ through naturally occurring variations (e.g. polymorphisms), each with its own valid existence. This clone is substantially in agreement with the reference, but a complete review of all prevailing variants is recommended prior to use. [More info](#)

OTI Annotation: This clone was engineered to express the complete ORF with an expression tag. Expression varies depending on the nature of the gene.

Components: The ORF clone is ion-exchange column purified and shipped in a 2D barcoded Matrix tube containing 10ug of transfection-ready, dried plasmid DNA (reconstitute with 100 ul of water).

Reconstitution Method:

1. Centrifuge at 5,000xg for 5min.
2. Carefully open the tube and add 100ul of sterile water to dissolve the DNA.
3. Close the tube and incubate for 10 minutes at room temperature.
4. Briefly vortex the tube and then do a quick spin (less than 5000xg) to concentrate the liquid at the bottom.
5. Store the suspended plasmid at -20°C. The DNA is stable for at least one year from date of shipping when stored at -20°C.

RefSeq: [NM_001130851.1](#), [NP_001124323.1](#)

RefSeq ORF: 519 bp

Locus ID: 1033

UniProt ID: [Q16667](#)

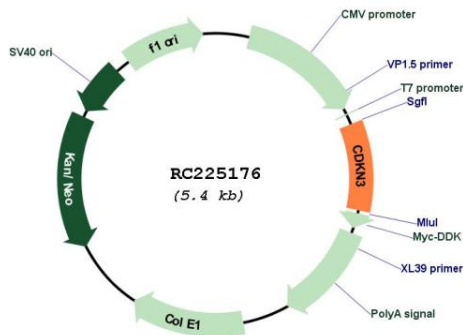
Cytogenetics: 14q22.2

Protein Families: Druggable Genome, Phosphatase

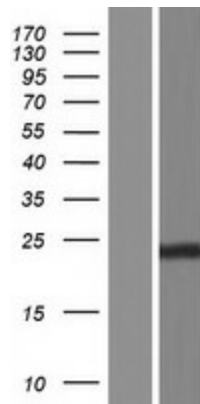
MW: 19.2 kDa

Gene Summary: The protein encoded by this gene belongs to the dual specificity protein phosphatase family. It was identified as a cyclin-dependent kinase inhibitor, and has been shown to interact with, and dephosphorylate CDK2 kinase, thus prevent the activation of CDK2 kinase. This gene was reported to be deleted, mutated, or overexpressed in several kinds of cancers. Alternatively spliced transcript variants encoding different isoforms have been found for this gene. [provided by RefSeq, Aug 2008]

Product images:



Circular map for RC225176



Western blot validation of overexpression lysate (Cat# [LY427288]) using anti-DDK antibody (Cat# [TA50011-100]). Left: Cell lysates from untransfected HEK293T cells; Right: Cell lysates from HEK293T cells transfected with RC225176 using transfection reagent MegaTran 2.0 (Cat# [TT210002]).