

Product datasheet for RC225161

PRH2 (NM_001110213) Human Tagged ORF Clone

Product data:

Product Type: Expression Plasmids
Product Name: PRH2 (NM_001110213) Human Tagged ORF Clone
Tag: Myc-DDK
Symbol: PRH2
Synonyms: Pr; pr1/Pr2; PRP-1/PRP-2
Mammalian Cell Selection: Neomycin
Vector: pCMV6-Entry (PS100001)
E. coli Selection: Kanamycin (25 ug/mL)
ORF Nucleotide Sequence: >RC225161 ORF sequence
 Red=Cloning site Blue=ORF Green=Tags(s)

TTTTGTAATACGACTCACTATAGGGCGCCGGGAATTCGTCGACTGGATCCGGTACCGAGGAGATCTGCC
 GCCCGGATCGCC

ATGCTTCTGATTCTGCTGTCTGCTGAGTGGCCCTGCTGGCCTTCAGCTCAGCTCAGGACTTAGATGAAGATGTCA
 GCCAAGAAGACGTTCCCTTGGTAATATCAGATGGAGGAGACTCTGAGCAGTTCATAGATGAGGAGCGTCA
 GGGACCACCTTTGGGAGGACAGCAATCTCAACCCTCTGCTGGTATGGGAACCAGGATGATGGCCCTCAG
 CAGGGACCACCCAACAAGGAGGCCAGCAGCAACAAGGTCCACCCTCCTCAGGAAAGCCACAAGGAC
 CACCCAACAGGGAGGCCATCCCCCTCCTCTCAAGGAAGGCCACAAGGACCACCCAACAGGGAGGCCA
 TCCCCGTCTCTCGAGGAAGGCCACAAGGACCACCCAACAGGGAGGCCATCAGCAAGGTCTCCCCCA
 CCTCCTCTGAAAGCCCAAGGACCACCTCCCAAGGGGCCGCCACAAGGACCTCCACAGGGGACGT
 CTCCTCAG

ACGCGTACGCGGCCGCTCGAGCAGAACTCATCTCAGAAGAGGATCTGGCAGCAAATGATATCCTGGATT
 ACAAGGATGACGACGATAAGGTTTAA

Protein Sequence: >RC225161 protein sequence
 Red=Cloning site Green=Tags(s)

MLLILLSVALLAFSSAQDLDEDVSDQEDVPLVISDGGDSEQFIDEERQGPPLGGQQSQPSAGDGNQDDGPQ
 QGPPQQGGQQQQGPPPPQGKPPQGGHPPPPQGRPPQGGHPPPPRGRPPQGGHPPPPRGRPPQGGHQQGPP
 PPPGKPPQGGPPQGGPPQGGSPQ

TRTRPLEQKLISEEDLAANDILDYKDDDDKV

Chromatograms: https://cdn.origene.com/chromatograms/mk6679_b02.zip



Restriction Sites: SgfI-MluI

Cloning Scheme:



ACCN: NM_001110213

ORF Size: 498 bp

OTI Disclaimer: The molecular sequence of this clone aligns with the gene accession number as a point of reference only. However, individual transcript sequences of the same gene can differ through naturally occurring variations (e.g. polymorphisms), each with its own valid existence. This clone is substantially in agreement with the reference, but a complete review of all prevailing variants is recommended prior to use. [More info](#)

OTI Annotation: This clone was engineered to express the complete ORF with an expression tag. Expression varies depending on the nature of the gene.

Components: The ORF clone is ion-exchange column purified and shipped in a 2D barcoded Matrix tube containing 10ug of transfection-ready, dried plasmid DNA (reconstitute with 100 ul of water).

Reconstitution Method:

1. Centrifuge at 5,000xg for 5min.
2. Carefully open the tube and add 100ul of sterile water to dissolve the DNA.
3. Close the tube and incubate for 10 minutes at room temperature.
4. Briefly vortex the tube and then do a quick spin (less than 5000xg) to concentrate the liquid at the bottom.
5. Store the suspended plasmid at -20°C. The DNA is stable for at least one year from date of shipping when stored at -20°C.

RefSeq: [NM_001110213.1](#), [NP_001103683.1](#)

RefSeq Size: 3177 bp

RefSeq ORF: 501 bp

Locus ID: 5555

UniProt ID: [P02810](#)

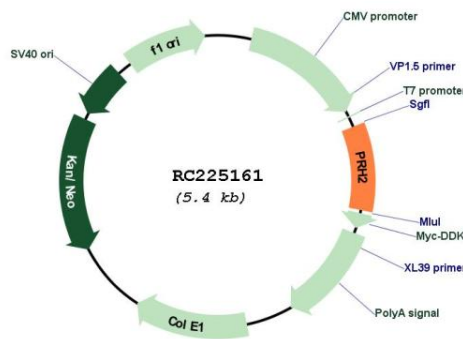
Cytogenetics: 12p13.2

Protein Families: Secreted Protein

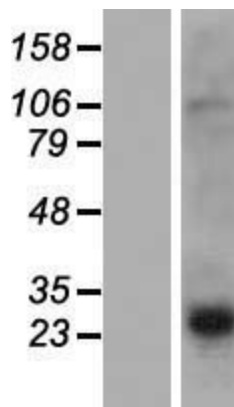
MW: 17 kDa

Gene Summary: This gene encodes a member of the heterogeneous family of proline-rich salivary glycoproteins. The encoded preproprotein undergoes proteolytic processing to generate one or more mature isoforms before secretion from the parotid and submandibular/sublingual glands. In western population this locus is commonly biallelic and encodes proline-rich protein (PRP) isoforms, PRP-1 and PRP-2. The reference genome encodes the PRP-1 allele. Certain alleles of this gene are associated with susceptibility to dental caries. This gene is located in a cluster of closely related salivary proline-rich proteins on chromosome 12. [provided by RefSeq, Oct 2015]

Product images:



Circular map for RC225161



Western blot validation of overexpression lysate (Cat# [LY426314]) using anti-DDK antibody (Cat# [TA50011-100]). Left: Cell lysates from untransfected HEK293T cells; Right: Cell lysates from HEK293T cells transfected with RC225161 using transfection reagent MegaTran 2.0 (Cat# [TT210002]).