

Product datasheet for **RC225156**

JDP2 (NM_001135047) Human Tagged ORF Clone

Product data:

Product Type: Expression Plasmids
Product Name: JDP2 (NM_001135047) Human Tagged ORF Clone
Tag: Myc-DDK
Symbol: JDP2
Synonyms: JUNDM2
Mammalian Cell Selection: Neomycin
Vector: pCMV6-Entry (PS100001)
E. coli Selection: Kanamycin (25 ug/mL)
ORF Nucleotide Sequence: >RC225156 ORF sequence
Red=Cloning site Blue=ORF Green=Tags(s)

TTTTGTAATACGACTCACTATAGGGCGGCCGGAATTCGTCGACTGGATCCGGTACCGAGGAGATCTGCC
GCC**CGATCGCC**

ATGATGCCTGGGCAGATCCCGGACCCCTTCGGTGACCACAGGCTCCCTGCCAGGGCTTGGCCCCCTGACCG
GGCTCCCCAGCTCGGCCCTGACTGTGGAGGAGCTGAAATACGCTGACATCCGCAACCTCGGGCCATGAT
TGCACCCCTTCACTTCTGGAGGTGAACTGGGCAAGAGGCCCGCCGCGGAGAAAGTGCAGCAGCCCGATGCCGGAACAAGAAGA
GAAGAGGAGCGAAGGAAAAGCGCCGGGAGAAGAACAAGTGCAGCAGCCCGATGCCGGAACAAGAAGA
AGGAGCGCACGGAGTTTCTGCAGCGGGAATCCGAGCGGCTGGAAGTCAATGAACGCAGAGCTGAAGACCCA
GATTGAGGAGCTGAAGCAGGAGCGCAGAGCTCATCCTGATGCTGAACCGACACCGCCCACTGCATC
GTCCGGACCGACAGTGTCAGACCCCGAGTCAGAAGGCAACCCACTGCTCGAGCAGCTCGAGAAGAAG

ACGCGTACGCGGCCGCTCGAGCAGAACTCATCTCAGAAGAGGATCTGGCAGCAAATGATATCCTGGATT
ACAAGGATGACGACGATAAGGTTTAA

Protein Sequence: >RC225156 protein sequence
Red=Cloning site Green=Tags(s)

MMPGQIPDPSVTTGSLPGLGPLTGLPSSALTVEELKYADIRNLGAMIAPLHFLEVKLGKRPQPVKSELDE
EEERRRRREKNKVAARCRNKKKERTEFLQRESERLELMNAELKTQIEELKQERQQLILMLNRHRPTCI
VRTDSVKTPSEGNPLLEQLEKK

TRTRPLEQKLISEEDLAANDILDYKDDDDKV

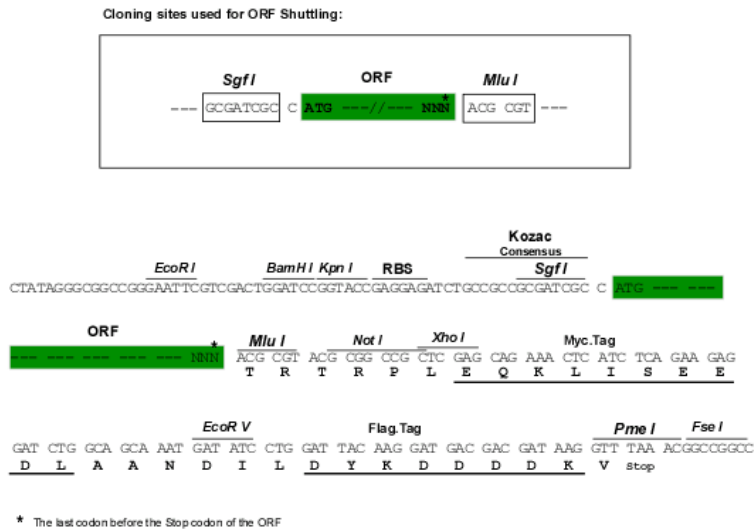
Chromatograms: https://cdn.origene.com/chromatograms/mk6266_f10.zip



[View online »](#)

Restriction Sites: SgfI-MluI

Cloning Scheme:



ACCN: NM_001135047

ORF Size: 489 bp

OTI Disclaimer: The molecular sequence of this clone aligns with the gene accession number as a point of reference only. However, individual transcript sequences of the same gene can differ through naturally occurring variations (e.g. polymorphisms), each with its own valid existence. This clone is substantially in agreement with the reference, but a complete review of all prevailing variants is recommended prior to use. [More info](#)

OTI Annotation: This clone was engineered to express the complete ORF with an expression tag. Expression varies depending on the nature of the gene.

Components: The ORF clone is ion-exchange column purified and shipped in a 2D barcoded Matrix tube containing 10ug of transfection-ready, dried plasmid DNA (reconstitute with 100 ul of water).

Reconstitution Method:

1. Centrifuge at 5,000xg for 5min.
2. Carefully open the tube and add 100ul of sterile water to dissolve the DNA.
3. Close the tube and incubate for 10 minutes at room temperature.
4. Briefly vortex the tube and then do a quick spin (less than 5000xg) to concentrate the liquid at the bottom.
5. Store the suspended plasmid at -20°C. The DNA is stable for at least one year from date of shipping when stored at -20°C.

RefSeq: [NM_001135047.2](#)

RefSeq Size: 3801 bp

RefSeq ORF: 492 bp

Locus ID: 122953

UniProt ID: [Q8WYK2](#)

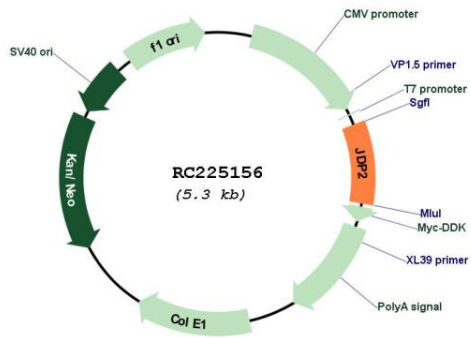
Cytogenetics: 14q24.3

Protein Families: Transcription Factors

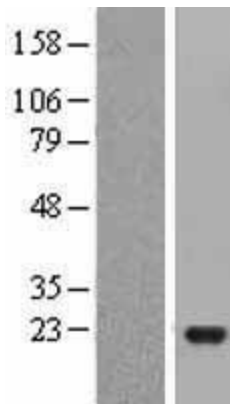
MW: 18.7 kDa

Gene Summary: Component of the AP-1 transcription factor that represses transactivation mediated by the Jun family of proteins. Involved in a variety of transcriptional responses associated with AP-1 such as UV-induced apoptosis, cell differentiation, tumorigenesis and antitumogenesis. Can also function as a repressor by recruiting histone deacetylase 3/HDAC3 to the promoter region of JUN. May control transcription via direct regulation of the modification of histones and the assembly of chromatin.[UniProtKB/Swiss-Prot Function]

Product images:



Circular map for RC225156



Western blot validation of overexpression lysate (Cat# [LY427535]) using anti-DDK antibody (Cat# [TA50011-100]). Left: Cell lysates from untransfected HEK293T cells; Right: Cell lysates from HEK293T cells transfected with [RC225157] using transfection reagent MegaTran 2.0 (Cat# [TT210002]).