

Product datasheet for **RC225155**

BCL2A1 (NM_001114735) Human Tagged ORF Clone

Product data:

Product Type: Expression Plasmids
Product Name: BCL2A1 (NM_001114735) Human Tagged ORF Clone
Tag: Myc-DDK
Symbol: BCL2A1
Synonyms: ACC-1; ACC-2; ACC1; ACC2; BCL2L5; BFL1; GRS; HBPA1
Mammalian Cell Selection: Neomycin
Vector: pCMV6-Entry (PS100001)
E. coli Selection: Kanamycin (25 ug/mL)
ORF Nucleotide Sequence: >RC225155 representing NM_001114735
Red=Cloning site Blue=ORF Green=Tags(s)

TTTTGTAATACGACTCACTATAGGGCGGCCGGAATTCGTCGACTGGATCCGGTACCGAGGAGATCTGCC
GCC**CGATCGCC**

ATGACAGACTGTGAATTTGGATATATTTACAGGCTGGCTCAGGACTATCTGCAGTGCCTACAGATAC
CACAACCTGGATCAGGTCCAAGCAAACGTCAGAGTGTACAAAATGTTGCGTTCTCAGTCCAAAAAGA
AGTGGAAAAGAATCTGAAGTCATGCTTGGACAATGTTAATGTTGTGTCCTAGACTGCCAGAACACTA
TTCACCAAGTGATGGAAAAGGAGTTTGAAGACGGCATCATAACTGGGAAGAATTGTAACCATATTTG
CATTTGAAGGTATTCTCATCAAGAACTTCTACGACAGCAAATGCCCCGGATGTGGATACCTATAAGGA
GATTTTCATATTTGTTGCGGAGTTCATAATGAATAACACAGGAGAATGGATAAGGCAAAACGGAGGCTGG
GGGAAATGGCACAATCACACACCTATGCTGGTAGAGTCAGTGGCCACAAGAAGAGGAAAATGGCTTTG

ACGCGTACGCGGCCGCTCGAGCAGAACTCATCTCAGAAGAGGATCTGGCAGCAAATGATATCCTGGATT
ACAAGGATGACGACGATAAGGTTTAA

Protein Sequence: >RC225155 representing NM_001114735
Red=Cloning site Green=Tags(s)

MTDCEFGYIYRLAQDYLCVLIQIPQPGSGPSKTSRVLQNVAFSVQKEVEKLNKSLDNVNVVSVDTARTL
FNQVMEKEFEDGIINWGRIVTIFAFEGILIKLLRQIQIAPDVDTYKEISYFVAEFIMNNTGEWIRQNGGW
GKWHNHTPMLVESVAHKRKMAL

TRTRPLEQKLISEEDLAANDILDYKDDDDKV

Chromatograms: https://cdn.origene.com/chromatograms/ja1465_e01.zip



[View online »](#)

Restriction Sites: SgfI-MluI

Cloning Scheme:



ACCN: NM_001114735

ORF Size: 489 bp

OTI Disclaimer: The molecular sequence of this clone aligns with the gene accession number as a point of reference only. However, individual transcript sequences of the same gene can differ through naturally occurring variations (e.g. polymorphisms), each with its own valid existence. This clone is substantially in agreement with the reference, but a complete review of all prevailing variants is recommended prior to use. [More info](#)

OTI Annotation: This clone was engineered to express the complete ORF with an expression tag. Expression varies depending on the nature of the gene.

Components: The ORF clone is ion-exchange column purified and shipped in a 2D barcoded Matrix tube containing 10ug of transfection-ready, dried plasmid DNA (reconstitute with 100 ul of water).

Reconstitution Method:

1. Centrifuge at 5,000xg for 5min.
2. Carefully open the tube and add 100ul of sterile water to dissolve the DNA.
3. Close the tube and incubate for 10 minutes at room temperature.
4. Briefly vortex the tube and then do a quick spin (less than 5000xg) to concentrate the liquid at the bottom.
5. Store the suspended plasmid at -20°C. The DNA is stable for at least one year from date of shipping when stored at -20°C.

RefSeq: [NM_001114735.2](#)

RefSeq ORF: 492 bp

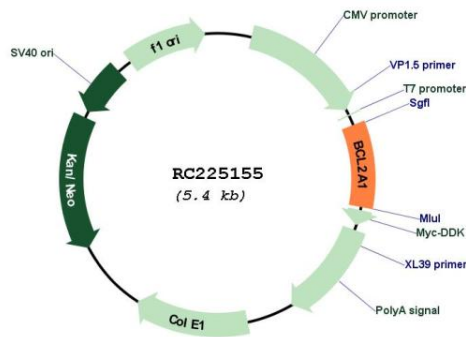
Locus ID: 597

UniProt ID: [Q16548](#)

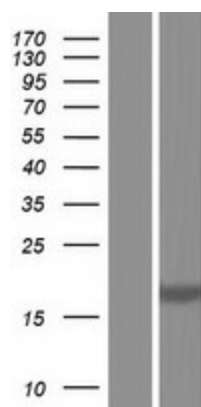
Cytogenetics:	15q25.1
Protein Families:	Druggable Genome
Protein Pathways:	Metabolic pathways
MW:	18.6 kDa

Gene Summary: This gene encodes a member of the BCL-2 protein family. The proteins of this family form hetero- or homodimers and act as anti- and pro-apoptotic regulators that are involved in a wide variety of cellular activities such as embryonic development, homeostasis and tumorigenesis. The protein encoded by this gene is able to reduce the release of pro-apoptotic cytochrome c from mitochondria and block caspase activation. This gene is a direct transcription target of NF-kappa B in response to inflammatory mediators, and is up-regulated by different extracellular signals, such as granulocyte-macrophage colony-stimulating factor (GM-CSF), CD40, phorbol ester and inflammatory cytokine TNF and IL-1, which suggests a cytoprotective function that is essential for lymphocyte activation as well as cell survival. Alternatively spliced transcript variants encoding different isoforms have been found for this gene. [provided by RefSeq, Jul 2008]

Product images:



Circular map for RC225155



Western blot validation of overexpression lysate (Cat# [LY426506]) using anti-DDK antibody (Cat# [TA50011-100]). Left: Cell lysates from untransfected HEK293T cells; Right: Cell lysates from HEK293T cells transfected with RC225155 using transfection reagent MegaTran 2.0 (Cat# [TT210002]).