

Product datasheet for RC225151

PSMG4 (NM_001128592) Human Tagged ORF Clone

Product data:

Product Type: Expression Plasmids
Product Name: PSMG4 (NM_001128592) Human Tagged ORF Clone
Tag: Myc-DDK
Symbol: PSMG4
Synonyms: bA506K6.2; C6orf86; PAC4
Mammalian Cell Selection: Neomycin
Vector: pCMV6-Entry (PS100001)
E. coli Selection: Kanamycin (25 ug/mL)
ORF Nucleotide Sequence: >RC225151 representing NM_001128592
Red=Cloning site Blue=ORF Green=Tags(s)

TTTTGTAATACGACTCACTATAGGGCGGCCGGAATTCGTCGACTGGATCCGGTACCGAGGAGATCTGCCGCCCGCATCGCC

ATGGAGGGGTGGTTGTCGCCGCCGGGGGACGTCTCCCTGCACAACTCAGCGCGAGGCTGTGGGAGCAGCTGGTCCACTCCACGTCATGCGGCTGACGGACTCGTGTTCCTGTGGGTGGGGCCACGCCGACCTGCGCAACTCGCCGTGGCCATGTGCAGCCGCTACGACTCCATCCCCGTGTCTACCTCCCTCTGGAGACCTTCCGACACGACCTCTACTGGCCTTGCCAGCGCTAGGGCTCGGAGGGAAGACTGGCCTGGCCTGTGAGTGTGGCGTAGAGTGGGATTAAGCAAAGGTCATGAGGCTGAATGCTCCACTTCCCACACCCCAACA

ACTCGGTACGCGGCCGCTCGAGCAGAACTCATCTCAGAAGAGGATCTGGCAGCAAATGATATCCTGGATTACAAGGATGACGACGATAAGGTTTAA

Protein Sequence: >RC225151 representing NM_001128592
Red=Cloning site Green=Tags(s)

MEGLVVAAGGDVSLHNF SARLWEQLVHFHVMRLTDSLFLWVGATPHLRNLAVAMCSRYDSIPVSTSLGDTSDTTSTGLAQLGLGGKTGLACEGVWGLSKGHEAECSTLPTPQHTSCGPARKTNKQVFSYNLQNTDSNFALLVENRIKEEMAFPEKF

TRTRPLEQKLI SEEDLAANDILDYKDDDDKV

Chromatograms: https://cdn.origene.com/chromatograms/mk8033_h07.zip



[View online »](#)

Restriction Sites: SgfI-MluI

Cloning Scheme:



ACCN: NM_001128592

ORF Size: 486 bp

OTI Disclaimer: The molecular sequence of this clone aligns with the gene accession number as a point of reference only. However, individual transcript sequences of the same gene can differ through naturally occurring variations (e.g. polymorphisms), each with its own valid existence. This clone is substantially in agreement with the reference, but a complete review of all prevailing variants is recommended prior to use. [More info](#)

OTI Annotation: This clone was engineered to express the complete ORF with an expression tag. Expression varies depending on the nature of the gene.

Components: The ORF clone is ion-exchange column purified and shipped in a 2D barcoded Matrix tube containing 10ug of transfection-ready, dried plasmid DNA (reconstitute with 100 ul of water).

Reconstitution Method:

1. Centrifuge at 5,000xg for 5min.
2. Carefully open the tube and add 100ul of sterile water to dissolve the DNA.
3. Close the tube and incubate for 10 minutes at room temperature.
4. Briefly vortex the tube and then do a quick spin (less than 5000xg) to concentrate the liquid at the bottom.
5. Store the suspended plasmid at -20°C. The DNA is stable for at least one year from date of shipping when stored at -20°C.

RefSeq: [NM_001128592.2](#)

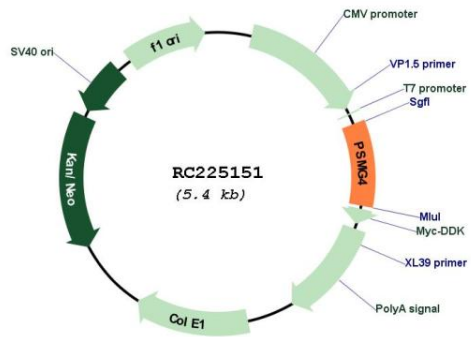
RefSeq ORF: 489 bp

Locus ID: 389362

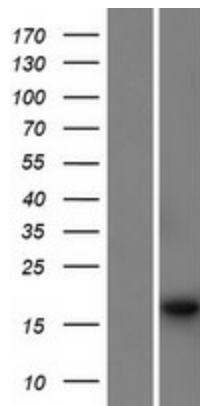
UniProt ID: [Q5IS54](#)

Cytogenetics: 6p25.2
MW: 17.5 kDa
Gene Summary: Chaperone protein which promotes assembly of the 20S proteasome.[UniProtKB/Swiss-Prot Function]

Product images:



Circular map for RC225151



Western blot validation of overexpression lysate (Cat# [LY426965]) using anti-DDK antibody (Cat# [TA50011-100]). Left: Cell lysates from untransfected HEK293T cells; Right: Cell lysates from HEK293T cells transfected with RC225151 using transfection reagent MegaTran 2.0 (Cat# [TT210002]).