

Product datasheet for **RC225142**

C1orf194 (NM_001122961) Human Tagged ORF Clone

Product data:

Product Type: Expression Plasmids
Product Name: C1orf194 (NM_001122961) Human Tagged ORF Clone
Tag: Myc-DDK
Symbol: C1orf194
Mammalian Cell Selection: Neomycin
Vector: pCMV6-Entry (PS100001)
E. coli Selection: Kanamycin (25 ug/mL)
ORF Nucleotide Sequence: >RC225142 representing NM_001122961
Red=Cloning site Blue=ORF Green=Tags(s)

TTTTGTAATACGACTCACTATAGGGCGGCCGGAATTCGTCGACTGGATCCGGTACCGAGGAGATCTGCC
GCC**CGATCGCC**

ATGGAGAGATCACCTCCAGACGTCGTCGCCTGGAAGAGGCCCAAAATTGCCATATAAGAACCCAACAC
ACCTTGCTCAGCAGCAGGAACCTGGAGTCGGCTCAACTCAACCCCAACAATTACTTCCATGAGGCGGGA
TGCCTACTATTTTGATCCCGAGATACCAAAGGATGACCTGGACTCCGCTTAGCAGCCTGTACAACCAC
CACACTGGGACATTCAAGAACAAAAGTGAGATACTGTTAAACCAGAAAACCACGCAGGATACCTATAGAA
CCAAGATCCAATTCCCTGGAGAATTTTTAACCCCTCCACTCCACCCATCACTTTCTGGCTAACATCAG
ACACTGGATCAACCCATAAAAGGAGTCCATCCACAGCATCCAAGGATCCATAGTGTCCCTCACACTGCA
GCCACCAATGGAGGCTACTCCCGAAAGAAAGATGGTGGCTTCTTCCACC

ACGCGTACGCGGCCGCTCGAGCAGAACTCATCTCAGAAGAGGATCTGGCAGCAATGATATCCTGGATT
ACAAGGATGACGACGATAAGGTTTAA

Protein Sequence: >RC225142 representing NM_001122961
Red=Cloning site Green=Tags(s)

MERSPSRRRLEEAPKLPYKNPHTLAQQQEPWSRLNSTPTITSMRRDAYYFDPEIPKDDLDFRLAALYNH
HTGTFFKNKSEILLNQKTTQDITYRTKIQFPGEFLTPPTPPITFLANIRHWINPKKESIHSIQGSIVSPHTA
ATNGGYSRKKDGGFFST

TRTRPLEQKLISEEDLAANDILDYKDDDDKV

Chromatograms: https://cdn.origene.com/chromatograms/mk8033_h10.zip

Restriction Sites: SgfI-MluI



[View online >](#)

Cloning Scheme:


ACCN: NM_001122961

ORF Size: 471 bp

OTI Disclaimer: The molecular sequence of this clone aligns with the gene accession number as a point of reference only. However, individual transcript sequences of the same gene can differ through naturally occurring variations (e.g. polymorphisms), each with its own valid existence. This clone is substantially in agreement with the reference, but a complete review of all prevailing variants is recommended prior to use. [More info](#)

OTI Annotation: This clone was engineered to express the complete ORF with an expression tag. Expression varies depending on the nature of the gene.

Components: The ORF clone is ion-exchange column purified and shipped in a 2D barcoded Matrix tube containing 10ug of transfection-ready, dried plasmid DNA (reconstitute with 100 ul of water).

- Reconstitution Method:**
1. Centrifuge at 5,000xg for 5min.
 2. Carefully open the tube and add 100ul of sterile water to dissolve the DNA.
 3. Close the tube and incubate for 10 minutes at room temperature.
 4. Briefly vortex the tube and then do a quick spin (less than 5000xg) to concentrate the liquid at the bottom.
 5. Store the suspended plasmid at -20°C. The DNA is stable for at least one year from date of shipping when stored at -20°C.

RefSeq: [NM_001122961.2](#)

RefSeq ORF: 474 bp

Locus ID: 127003

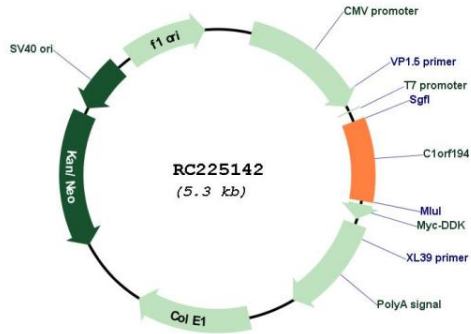
UniProt ID: [Q5T5A4](#)

Cytogenetics: 1p13.3

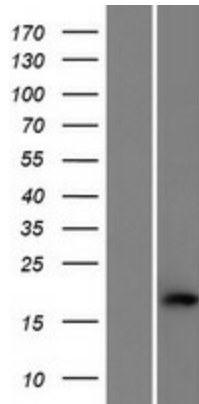
MW: 17.9 kDa

Gene Summary: May play an important role for the maintenance of myelin-axon integrity (By similarity). May affect intracellular Ca(2+) homeostasis (PubMed:31199454).[UniProtKB/Swiss-Prot Function]

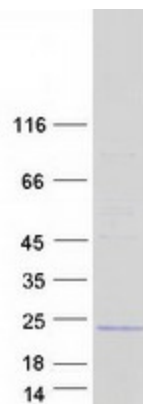
Product images:



Circular map for RC225142



Western blot validation of overexpression lysate (Cat# [LY426588]) using anti-DDK antibody (Cat# [TA50011-100]). Left: Cell lysates from untransfected HEK293T cells; Right: Cell lysates from HEK293T cells transfected with RC225142 using transfection reagent MegaTran 2.0 (Cat# [TT210002]).



Coomassie blue staining of purified C1orf194 protein (Cat# [TP325142]). The protein was produced from HEK293T cells transfected with C1orf194 cDNA clone (Cat# RC225142) using MegaTran 2.0 (Cat# [TT210002]).

