

Product datasheet for **RC225139**

Cytochrome b reductase 1 (CYBRD1) (NM_001127383) Human Tagged ORF Clone

Product data:

Product Type:	Expression Plasmids
Product Name:	Cytochrome b reductase 1 (CYBRD1) (NM_001127383) Human Tagged ORF Clone
Tag:	Myc-DDK
Symbol:	Cytochrome b reductase 1
Synonyms:	CYB561A2; DCYTB; FRRS3
Mammalian Cell Selection:	Neomycin
Vector:	pCMV6-Entry (PS100001)
E. coli Selection:	Kanamycin (25 ug/mL)
ORF Nucleotide Sequence:	>RC225139 representing NM_001127383 Red=Cloning site Blue=ORF Green=Tags(s)

TTTTGTAATACGACTCACTATAGGGCGGCCGGAATTCGTCGACTGGATCCGGTACCGAGGAGATCTGCC
GCC**CGATCGCC**

ATGGCCATGGAGGGCTACTGGCGTTCCTGGCGTGCTGGGGTCGGCACTGCTCGTCGGCTTCTGTCCG
TGATCTTCGCCCTCGTCTGGGTCTCCACTACCGAGAGGGGCTTGGCTGGGATGGGAGCGCACTAGAGTT
TAACTGGCACCCAGTGCTCATGGTCACCGGCTTCGTCTTCATCCAGGGCATCGCTTCTTCAGGTTTTTC
AGTCTTTCTGCTCCATGGGCTCCGCTTCTCTCCGAGCATTCTCATGCCATAACATGTTATTCTGGA
ATTGTCATCTTTGGAACAGTGATTGCAACAGCACTTATGGGATTGACAGAGAACTGATTTTTCCCTGA
GAGATCCTGCATACAGTACATCCCGCCAGAAGGTGTTTTCGTAAATACGCTTGGCTTCTGATCCTGGT
GTTCCGGGCCCTCATTTTTGGATAGTACCAGACCGCAATGGAAACGTCC

ACGCGTACGCGGCCGCTCGAGCAGAACTCATCTCAGAAGAGGATCTGGCAGCAAATGATATCCTGGATT
ACAAGGATGACGACGATAAGGTTTAA

Protein Sequence:	>RC225139 representing NM_001127383 Red=Cloning site Green=Tags(s)
-------------------	---

MAMEGYWRFLALLGSALLVGFLSVIFALVWVLYHYREGLWGDGSALEFNWHPVLMVTGFVFIQGIASFRFF
SLSASMGSAFSPSISHAHTCLFWNCHLWNSDCNSTYGIDRETDFFPERSCIQYIPARRCFRKYAWPSPDG
VRGPHFLDSHQAMETS

TRTRPLEQKLISEEDLAANDILDYKDDDDKV

Chromatograms:	https://cdn.origene.com/chromatograms/mg3381_a09.zip
----------------	---



[View online »](#)

Restriction Sites: SgfI-MluI

Cloning Scheme:



ACCN: NM_001127383

ORF Size: 471 bp

OTI Disclaimer: The molecular sequence of this clone aligns with the gene accession number as a point of reference only. However, individual transcript sequences of the same gene can differ through naturally occurring variations (e.g. polymorphisms), each with its own valid existence. This clone is substantially in agreement with the reference, but a complete review of all prevailing variants is recommended prior to use. [More info](#)

OTI Annotation: This clone was engineered to express the complete ORF with an expression tag. Expression varies depending on the nature of the gene.

Components: The ORF clone is ion-exchange column purified and shipped in a 2D barcoded Matrix tube containing 10ug of transfection-ready, dried plasmid DNA (reconstitute with 100 ul of water).

Reconstitution Method:

1. Centrifuge at 5,000xg for 5min.
2. Carefully open the tube and add 100ul of sterile water to dissolve the DNA.
3. Close the tube and incubate for 10 minutes at room temperature.
4. Briefly vortex the tube and then do a quick spin (less than 5000xg) to concentrate the liquid at the bottom.
5. Store the suspended plasmid at -20°C. The DNA is stable for at least one year from date of shipping when stored at -20°C.

RefSeq: [NM_001127383.2](#)

RefSeq ORF: 474 bp

Locus ID: 79901

UniProt ID: [Q53TN4](#)

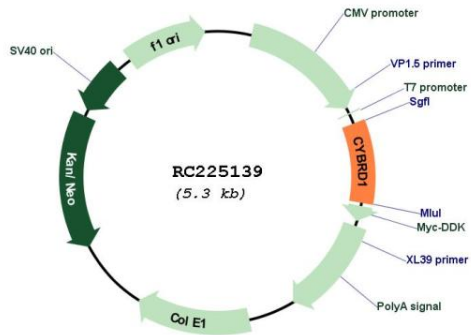
Cytogenetics: 2q31.1

Protein Families: Transmembrane

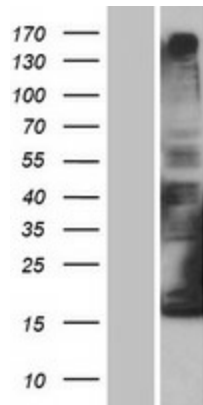
MW: 17.7 kDa

Gene Summary: This gene is a member of the cytochrome b(561) family that encodes an iron-regulated protein. It highly expressed in the duodenal brush border membrane. It has ferric reductase activity and is believed to play a physiological role in dietary iron absorption. [provided by RefSeq, Jul 2008]

Product images:



Circular map for RC225139



Western blot validation of overexpression lysate (Cat# [LY426766]) using anti-DDK antibody (Cat# [TA50011-100]). Left: Cell lysates from untransfected HEK293T cells; Right: Cell lysates from HEK293T cells transfected with RC225139 using transfection reagent MegaTran 2.0 (Cat# [TT210002]).