

Product datasheet for **RC225136**

ADM5 (NM_001101340) Human Tagged ORF Clone

Product data:

Product Type: Expression Plasmids
Tag: Myc-DDK
Symbol: ADM5
Synonyms: AM5; C19orf76
Mammalian Cell Selection: Neomycin
Vector: pCMV6-Entry (PS100001)
E. coli Selection: Kanamycin (25 ug/mL)

ORF Nucleotide Sequence: >RC225136 representing NM_001101340
Red=Cloning site Blue=ORF Green=Tags(s)

TTTGTGAATACGACTCACTATAGGGCGGCCGGAATTCGTCGACTGGATCCGGTACCGAGGAGATCTGCC
GCC**CGATCGC**

ATGACTATCCACATCCTCATCTGCTGTTGCTCCTCGCCTTCTCCGCCAAGGGGACCTGGACACTGCAG
CCAGGCGAGGCCAGCACCAGGTCCTCCAGCAGCGGGCAGCTCTGCTACCTGGGCGTATGCCGGACCCA
CCGCTTGGCGGAGATCATATACTGGATTGCTGTCTCCACCAAGGAGCCCTCGGGGAAGGCCAGCCACGA
GCCCCAGGACCCCTACAGCTATGGGCGCCCGGTGGCGGAGGCGGAAGCCCGGCTCGTTCCAGGAT
TCCGGCTGCAGCGAGGGGGCTAGCGCAGTGCCAGCTCGCTGGGTGACCTCGGGCACGGCTCGTCCCT
CCTCGGCTTCAGTTTGCCTATCTGTATGTTGGAGCTTCTACTCCACATTTCTTCTCCCTAACTCCAGCC
CCTGAAACCGTCTCCCGAGTCCCTCCCGGGCTGCGAC

ACGCGTACGCGGCCGCTCGAGCAGAACTCATCTCAGAAGAGGATCTGGCAGCAATGATATCCTGGATT
ACAAGGATGACGACGATAAGGTTTAA

Protein Sequence: >RC225136 representing NM_001101340
Red=Cloning site Green=Tags(s)

MTIHILILLLLAFSAQGDLDTAARRGQHQPQHRGHVCYLGVCRTHLAEIIYWIRCLHQGALGEGQPR
APGPLQLWAPPVARGGSPARFPGFRPAARGLAQCPARWVTSGTARPLLGFSLPICMLELLHHISSPLTPA
PETVFPSPSPGCD

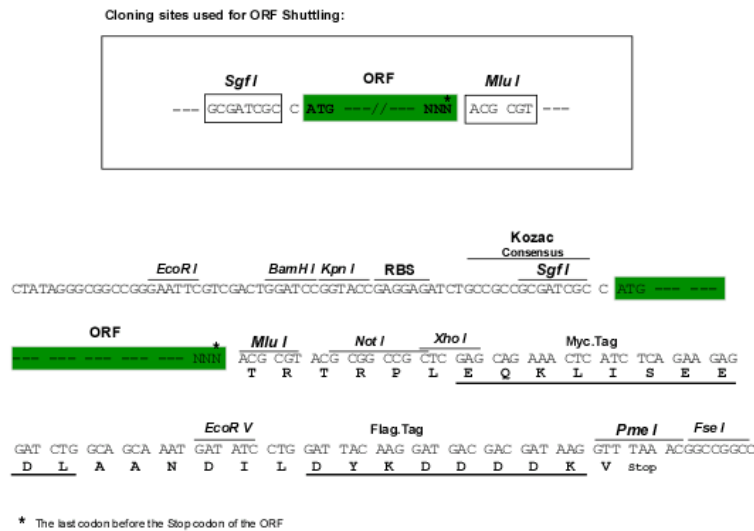
TRTRPLEQKLISEEDLAANDILDYKDDDDKV

Chromatograms: https://cdn.origene.com/chromatograms/mk8033_h12.zip



Restriction Sites: SgfI-MluI

Cloning Scheme:



ACCN: NM_001101340

ORF Size: 459 bp

OTI Disclaimer: The molecular sequence of this clone aligns with the gene accession number as a point of reference only. However, individual transcript sequences of the same gene can differ through naturally occurring variations (e.g. polymorphisms), each with its own valid existence. This clone is substantially in agreement with the reference, but a complete review of all prevailing variants is recommended prior to use. [More info](#)

OTI Annotation: This clone was engineered to express the complete ORF with an expression tag. Expression varies depending on the nature of the gene.

Components: The ORF clone is ion-exchange column purified and shipped in a 2D barcoded Matrix tube containing 10ug of transfection-ready, dried plasmid DNA (reconstitute with 100 ul of water).

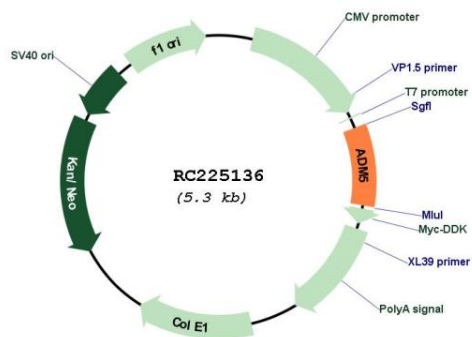
Reconstitution Method:

1. Centrifuge at 5,000xg for 5min.
2. Carefully open the tube and add 100ul of sterile water to dissolve the DNA.
3. Close the tube and incubate for 10 minutes at room temperature.
4. Briefly vortex the tube and then do a quick spin (less than 5000xg) to concentrate the liquid at the bottom.
5. Store the suspended plasmid at -20°C. The DNA is stable for at least one year from date of shipping when stored at -20°C.

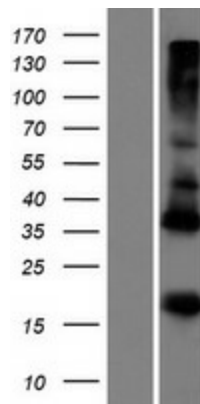
Note: Plasmids are not sterile. For experiments where strict sterility is required, filtration with 0.22um filter is required.

RefSeq:	NM_001101340.1, NP_001094810.1
RefSeq ORF:	462 bp
Locus ID:	199800
UniProt ID:	C9JUS6
Cytogenetics:	19q13.33
MW:	16.4 kDa
Gene Summary:	Probable non-functional remnant of adrenomedullin-5.[UniProtKB/Swiss-Prot Function]

Product images:



Circular map for RC225136



Western blot validation of overexpression lysate (Cat# [LY426140]) using anti-DDK antibody (Cat# [TA50011-100]). Left: Cell lysates from un-transfected HEK293T cells; Right: Cell lysates from HEK293T cells transfected with RC225136 using transfection reagent MegaTran 2.0 (Cat# [TT210002]).