

## Product datasheet for **RC225134**

### ORMDL1 (NM\_001128150) Human Tagged ORF Clone

#### Product data:

**Product Type:** Expression Plasmids  
**Product Name:** ORMDL1 (NM\_001128150) Human Tagged ORF Clone  
**Tag:** Myc-DDK  
**Symbol:** ORMDL1  
**Mammalian Cell Selection:** Neomycin  
**Vector:** pCMV6-Entry (PS100001)  
**E. coli Selection:** Kanamycin (25 ug/mL)  
**ORF Nucleotide Sequence:** >RC225134 ORF sequence  
Red=Cloning site Blue=ORF Green=Tags(s)

TTTTGTAATACGACTCACTATAGGGCGGCCGGAATTCGTCGACTGGATCCGGTACCGAGGAGATCTGCC  
GCC**CGATCGCC**

ATGAACGTTGGAGTTGCCACAGTGAAGTGAATCCAAATACCCGTGTCATGAACAGCCGGGTATGTGGC  
TGACATATGCATTGGGAGTTGGCTTGCTTCATATTGTCTTACTCAGCATTCCCTTCTTCAGTGTTCTGT  
TGCTTGGACTTTAACAATATTATACATAATCTGGGGATGTACGTATTTTGCATGCAGTGAAGGAACA  
CCTTTGAACTCCTGACCAGGGTAAAGCAAGGCTCCTAACTATTGGGAACAACGGACTATGGAGTAC  
AGTTTACATCTTACGGAAGTTTTTCACAATTTTCCAATAATTCTATATTTTCTGGCAAGTTTCTATAC  
GAAGTATGATCCAACCTCACTTCATCCTAAACACAGCTTCTCCTGAGTGTACTAATCCCAAAATGCCA  
CAACTACATGGTGTTCGGATCTTTGAATTAATAAGTAT

**ACGCGT**ACGCGGCCGCTCGAGCAGAACTCATCTCAGAAGAGGATCTGGCAGCAATGATATCCTGGATT  
ACAAGGATGACGACGATAAGGTTTAA

**Protein Sequence:** >RC225134 protein sequence  
Red=Cloning site Green=Tags(s)

MNVGVAHSEVNPNTVMNSRGMWLTALGVLLHIVLLSIPFFSVPVAWTLNIIHNLGMYVFLHAVKGT  
PFETPDQ GKARLLTHWEQLDYG VQFTSSRKFFTISPIILYFLASFYTKYDPTHFILNTASLLSVLIPKMP  
QLHGVRIFGINKY

**TR**TRPLEQKLI SEEDLAANDILDYKDDDDKV

**Chromatograms:** [https://cdn.origene.com/chromatograms/mk6079\\_c09.zip](https://cdn.origene.com/chromatograms/mk6079_c09.zip)

**Restriction Sites:** SgfI-MluI



[View online >](#)

**Cloning Scheme:**


**ACCN:** NM\_001128150

**ORF Size:** 459 bp

**OTI Disclaimer:** Due to the inherent nature of this plasmid, standard methods to replicate additional amounts of DNA in E. coli are highly likely to result in mutations and/or rearrangements. Therefore, OriGene does not guarantee the capability to replicate this plasmid DNA. Additional amounts of DNA can be purchased from OriGene with batch-specific, full-sequence verification at a reduced cost. Please contact our customer care team at [custsupport@origene.com](mailto:custsupport@origene.com) or by calling 301.340.3188 option 3 for pricing and delivery.

The molecular sequence of this clone aligns with the gene accession number as a point of reference only. However, individual transcript sequences of the same gene can differ through naturally occurring variations (e.g. polymorphisms), each with its own valid existence. This clone is substantially in agreement with the reference, but a complete review of all prevailing variants is recommended prior to use. [More info](#)

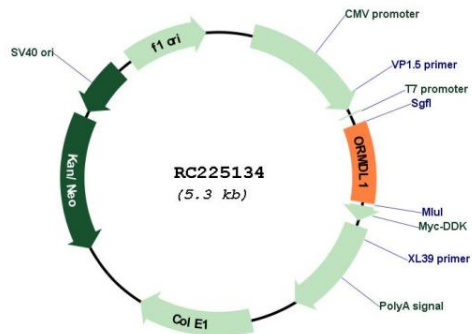
**OTI Annotation:** This clone was engineered to express the complete ORF with an expression tag. Expression varies depending on the nature of the gene.

**Components:** The ORF clone is ion-exchange column purified and shipped in a 2D barcoded Matrix tube containing 10ug of transfection-ready, dried plasmid DNA (reconstitute with 100 ul of water).

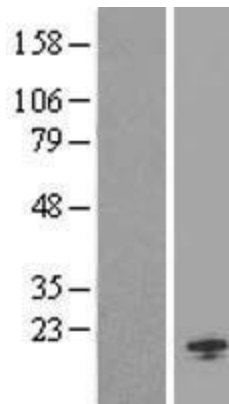
- Reconstitution Method:**
1. Centrifuge at 5,000xg for 5min.
  2. Carefully open the tube and add 100ul of sterile water to dissolve the DNA.
  3. Close the tube and incubate for 10 minutes at room temperature.
  4. Briefly vortex the tube and then do a quick spin (less than 5000xg) to concentrate the liquid at the bottom.
  5. Store the suspended plasmid at -20°C. The DNA is stable for at least one year from date of shipping when stored at -20°C.

RefSeq: [NM\\_001128150.2](#)  
 RefSeq Size: 2075 bp  
 RefSeq ORF: 462 bp  
 Locus ID: 94101  
 UniProt ID: [Q9P0S3](#)  
 Cytogenetics: 2q32.2  
 Protein Families: Transmembrane  
 MW: 17.4 kDa  
 Gene Summary: Negative regulator of sphingolipid synthesis.[UniProtKB/Swiss-Prot Function]

### Product images:



Circular map for RC225134



Western blot validation of overexpression lysate (Cat# [LY426900]) using anti-DDK antibody (Cat# [TA50011-100]). Left: Cell lysates from untransfected HEK293T cells; Right: Cell lysates from HEK293T cells transfected with RC225134 using transfection reagent MegaTran 2.0 (Cat# [TT210002]).