

Product datasheet for **RC225131**

C1orf144 (SZRD1) (NM_001114600) Human Tagged ORF Clone

Product data:

Product Type: Expression Plasmids
Product Name: C1orf144 (SZRD1) (NM_001114600) Human Tagged ORF Clone
Tag: Myc-DDK
Symbol: C1orf144
Synonyms: C1orf144
Mammalian Cell Selection: Neomycin
Vector: pCMV6-Entry (PS100001)
E. coli Selection: Kanamycin (25 ug/mL)
ORF Nucleotide Sequence: >RC225131 representing NM_001114600
Red=Cloning site Blue=ORF Green=Tags(s)

TTTTGTAATACGACTCACTATAGGGCGGCCGGAATTCGTCGACTGGATCCGGTACCGAGGAGATCTGCC
GCC**CGATCGCC**

ATGGAAGATGAGGAGGTCGCTGAGAGCTGGGAAGAGGGCGGCAGACAGCGGGGAAATAGACAGACGGTTGG
AAAAAACTGAAGATCACACAAAAGAGAGCAGGAAATCCAAATCTCCTCCCAAAGTGCCATTGTGAT
TCAGGACGATAGCCTTCCCGGGGGCCCTCCACAGATCCGCATCCTCAAGAGGCCACCAGCAACGGT
GTGGTCAGCAGCCCACTCCACCAGCAGGCCACCCTTCCAGTCAAGTCCCTAGCACAGCGAGAGGCCG
AGTACGCCGAGGCCGGAAGCGGATCCTGGGCAGCGCCAGCCCGAGGAGGAGCAGGAGAAACCCATCCT
CGACAGGCCAACAGGATCTCCAACCCGAAGACAGCAGGCAGCCCAATAATGTGATCAGACAGCCTTTG
GGTCTGATGGGTCTCAAGGCTTCAAACAGCGCAGA

ACGCGTACGCGGCCGCTCGAGCAGAACTCATCTCAGAAGAGGATCTGGCAGCAAATGATATCCTGGATT
ACAAGGATGACGACGATAAGGTTTAA

Protein Sequence: >RC225131 representing NM_001114600
Red=Cloning site Green=Tags(s)

MEDEEVAESWEEAADSGEIDRRLEKCLKITQKESRKSPPKVPVIVIQDDSLPAGPPPQIRILKRPTSNG
VYSSPNSTRPTLPVKSLAQREAEYAEARKRILGSASPEEEQEKPIILDRPTRISQPEDSRQPNVIRQPL
GPDGSQGFQRR

TRTRPLEQKLISEEDLAANDILDYKDDDDKV

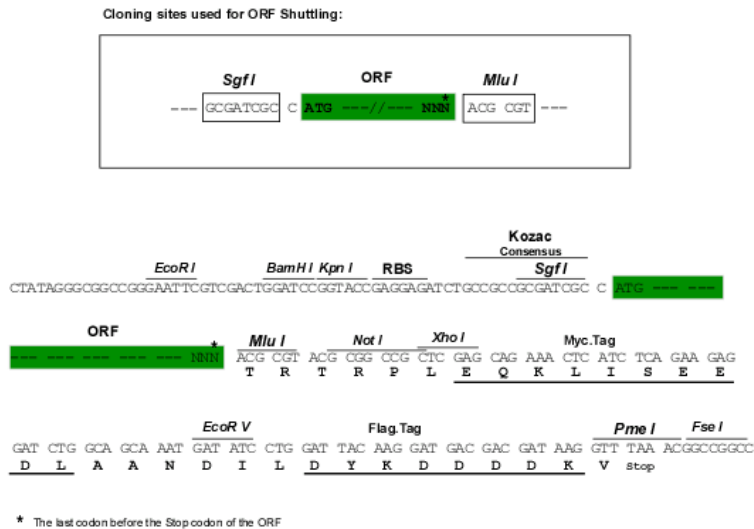
Chromatograms: https://cdn.origene.com/chromatograms/mg4375_c06.zip



[View online »](#)

Restriction Sites: SgfI-MluI

Cloning Scheme:



ACCN: NM_001114600

ORF Size: 456 bp

OTI Disclaimer: The molecular sequence of this clone aligns with the gene accession number as a point of reference only. However, individual transcript sequences of the same gene can differ through naturally occurring variations (e.g. polymorphisms), each with its own valid existence. This clone is substantially in agreement with the reference, but a complete review of all prevailing variants is recommended prior to use. [More info](#)

OTI Annotation: This clone was engineered to express the complete ORF with an expression tag. Expression varies depending on the nature of the gene.

Components: The ORF clone is ion-exchange column purified and shipped in a 2D barcoded Matrix tube containing 10ug of transfection-ready, dried plasmid DNA (reconstitute with 100 ul of water).

Reconstitution Method:

1. Centrifuge at 5,000xg for 5min.
2. Carefully open the tube and add 100ul of sterile water to dissolve the DNA.
3. Close the tube and incubate for 10 minutes at room temperature.
4. Briefly vortex the tube and then do a quick spin (less than 5000xg) to concentrate the liquid at the bottom.
5. Store the suspended plasmid at -20°C. The DNA is stable for at least one year from date of shipping when stored at -20°C.

RefSeq: [NM_001114600.3](#)

RefSeq ORF: 459 bp

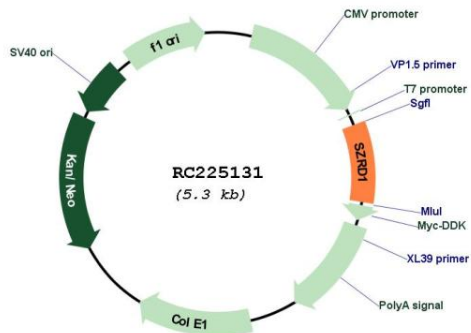
Locus ID: 26099

UniProt ID: [Q7Z422](#)

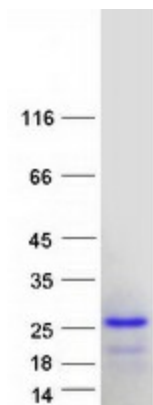
Cytogenetics: 1p36.13

MW: 16.8 kDa

Product images:



Circular map for RC225131



Coomassie blue staining of purified SZRD1 protein (Cat# [TP325131]). The protein was produced from HEK293T cells transfected with SZRD1 cDNA clone (Cat# RC225131) using MegaTran 2.0 (Cat# [TT210002]).