

Product datasheet for **RC225125**

RNF24 (NM_001134337) Human Tagged ORF Clone

Product data:

Product Type: Expression Plasmids
Product Name: RNF24 (NM_001134337) Human Tagged ORF Clone
Tag: Myc-DDK
Symbol: RNF24
Synonyms: G1L
Mammalian Cell Selection: Neomycin
Vector: pCMV6-Entry (PS100001)
E. coli Selection: Kanamycin (25 ug/mL)
ORF Nucleotide Sequence: >RC225125 ORF sequence
Red=Cloning site Blue=ORF Green=Tags(s)

TTTTGTAATACGACTCACTATAGGGCGCCGGGAATTCGTCGACTGGATCCGGTACCGAGGAGATCTGCC
GCC**CGATCGCC**

ATGAGCTCGGATTTCCACATTACAACCTCAGGATGCCTAATATTGGATTCCAGAATCTGCCTCTCAACA
TATATATTGGTTTTGGTACTGCTATATTTGTCTTCATCCTTAGTTTACTCTTCTGTTGCTACTTGAT
TAGGCTAAGACATCAAGCACACAAAGAATTTATGCCTACAAACAGGTTATATTAAGAGAGAAAGTAAAA
GAATTGAATTTACATGAGCTCTGTGCAGTGTGCCTAGAAGACTTCAAGCCTCGAGATGAGTTGGGGATT
GCCCATGTAAGCACGCCCTCCACAGAAAGTGCCTTATTAAGTGGCTGGAGGTTGTAAGTGTGTCCCCT
GTGCAACATGCCAGTTCTACAGCTGGCCAGTTGCACAGTAAGCAGGACCGTGGACCCCTCAGGGGCC
CTTCTGGGGCAGAGAACATTGTA

ACGCGTACGCGGCCGCTCGAGCAGAACTCATCTCAGAAGAGGATCTGGCAGCAATGATATCCTGGATT
ACAAGGATGACGACGATAAGGTTTAA

Protein Sequence: >RC225125 protein sequence
Red=Cloning site Green=Tags(s)
MSSDFPHYNFRMPNIGFQNLPLNIYIVVFGTAIFVFILSLLFCCYLIRLRHQAHKEFYAYKQVILKEKVK
ELNLHELCAVCLDFKPRDELGICPKHAFHRKCLIKWLEVRKVCPLCNMPVLQLAQLHKSQDRGPPQGP
LPGAENIV

TRTRPLEQKLISEEDLAANDILDYKDDDDKV

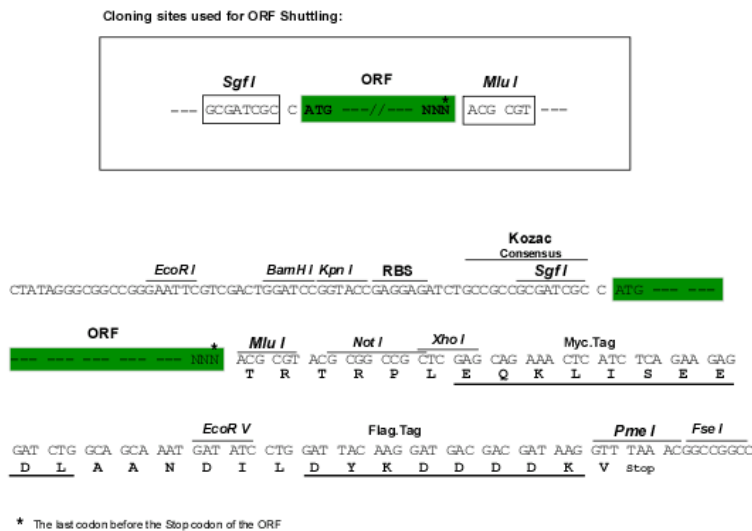
Chromatograms: https://cdn.origene.com/chromatograms/mk6341_h07.zip



[View online >](#)

Restriction Sites: SgfI-MluI

Cloning Scheme:



ACCN: NM_001134337

ORF Size: 444 bp

OTI Disclaimer: The molecular sequence of this clone aligns with the gene accession number as a point of reference only. However, individual transcript sequences of the same gene can differ through naturally occurring variations (e.g. polymorphisms), each with its own valid existence. This clone is substantially in agreement with the reference, but a complete review of all prevailing variants is recommended prior to use. [More info](#)

OTI Annotation: This clone was engineered to express the complete ORF with an expression tag. Expression varies depending on the nature of the gene.

Components: The ORF clone is ion-exchange column purified and shipped in a 2D barcoded Matrix tube containing 10ug of transfection-ready, dried plasmid DNA (reconstitute with 100 ul of water).

Reconstitution Method:

1. Centrifuge at 5,000xg for 5min.
2. Carefully open the tube and add 100ul of sterile water to dissolve the DNA.
3. Close the tube and incubate for 10 minutes at room temperature.
4. Briefly vortex the tube and then do a quick spin (less than 5000xg) to concentrate the liquid at the bottom.
5. Store the suspended plasmid at -20°C. The DNA is stable for at least one year from date of shipping when stored at -20°C.

RefSeq: [NM_001134337.3](#)

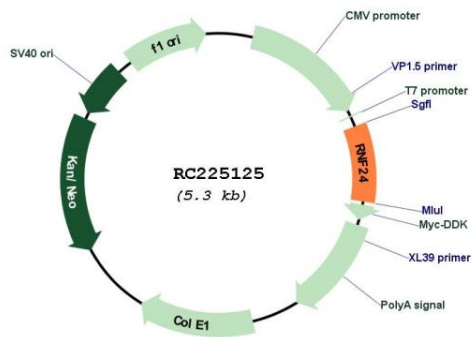
RefSeq Size: 3244 bp

RefSeq ORF: 447 bp

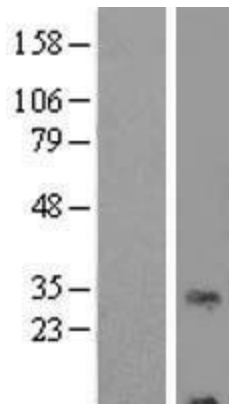
Locus ID: 11237

UniProt ID: [Q9Y225](#)
Cytogenetics: 20p13
Protein Families: Druggable Genome, Transmembrane
MW: 17.2 kDa
Gene Summary: This gene encodes an integral membrane protein that contains a RING-type zinc finger. The encoded protein may interact with multiple transient receptor potential cation channel subfamily C (TRPC) proteins and regulate the trafficking and insertion of these proteins into the plasma membrane. [provided by RefSeq, Mar 2016]

Product images:



Circular map for RC225125



Western blot validation of overexpression lysate (Cat# [LY427393]) using anti-DDK antibody (Cat# [TA50011-100]). Left: Cell lysates from untransfected HEK293T cells; Right: Cell lysates from HEK293T cells transfected with RC225125 using transfection reagent MegaTran 2.0 (Cat# [TT210002]).