

## Product datasheet for **RC225120**

### FKBP2 (NM\_001135208) Human Tagged ORF Clone

#### Product data:

**Product Type:** Expression Plasmids  
**Product Name:** FKBP2 (NM\_001135208) Human Tagged ORF Clone  
**Tag:** Myc-DDK  
**Symbol:** FKBP2  
**Synonyms:** FKBP-13; FKBP13; PPIase  
**Mammalian Cell Selection:** Neomycin  
**Vector:** pCMV6-Entry (PS100001)  
**E. coli Selection:** Kanamycin (25 ug/mL)  
**ORF Nucleotide Sequence:** >RC225120 ORF sequence  
 Red=Cloning site Blue=ORF Green=Tags(s)

TTTTGTAATACGACTCACTATAGGGCGGCCGGAATTCGTCGACTGGATCCGGTACCGAGGAGATCTGCC  
 GCC**CGATCGCC**

ATGAGGCTGAGCTGGTCCGGGTCCTGACAGTACTGTCCATCTGCCTGAGCGCCGTGGCCACGGCCACGG  
 GGGCCGAGGGCAAAGGAAGCTGCAGATCGGGTCAAGAAGCGGGTGGACCACTGTCCCATAAATCGCG  
 CAAAGGGGATGCTCTGCACATGCACTACACGGGAAGCTGGAAGATGGGACAGAGTTTGACAGCAGCCTG  
 CCCCAGAACCAGCCCTTTGTCTTCTCCCTTGGCACAGGCCAGGTCATCAAGGGCTGGACAGGGGCTGC  
 TGGGGATGTGTGAGGGGAAAAGCGCAAGCTGGTATCCCATCCGAGCTAGGGTATGGAGAGCGGGGAGC  
 TCCCCAAAGATTCCAGGCGGTGCAACCCTGGTGTTCGAGGTGGAGCTGCTCAAATAGAGCGACGAAC  
 TGGCTG

**ACGCGT**ACGCGGCCGCTCGAGCAGAACTCATCTCAGAAGAGGATCTGGCAGCAAATGATATCCTGGATT  
 ACAAGGATGACGACGATAAGGTTTAA

**Protein Sequence:** >RC225120 protein sequence  
 Red=Cloning site Green=Tags(s)

MRLSWFRVLTVLSICLSAVATATGAEGKRKLIQIVKKRVDHCPIKSRKGDVLMHYTGKLEDGTEFDSSL  
 PQNQPFVFSLGTGQVIKWDQQLGMCEGEKRKLVIPSELGYGERGAPPKIPGGATLVFEVELLKIERR  
 EL

**TRTRPLEQKLI**SEEDLAANDILDYKDDDDKV

**Chromatograms:** [https://cdn.origene.com/chromatograms/mk6025\\_f02.zip](https://cdn.origene.com/chromatograms/mk6025_f02.zip)



[View online »](#)

Restriction Sites: SgfI-MluI

Cloning Scheme:



ACCN: NM\_001135208

ORF Size: 426 bp

OTI Disclaimer: The molecular sequence of this clone aligns with the gene accession number as a point of reference only. However, individual transcript sequences of the same gene can differ through naturally occurring variations (e.g. polymorphisms), each with its own valid existence. This clone is substantially in agreement with the reference, but a complete review of all prevailing variants is recommended prior to use. [More info](#)

OTI Annotation: This clone was engineered to express the complete ORF with an expression tag. Expression varies depending on the nature of the gene.

Components: The ORF clone is ion-exchange column purified and shipped in a 2D barcoded Matrix tube containing 10ug of transfection-ready, dried plasmid DNA (reconstitute with 100 ul of water).

Reconstitution Method:

1. Centrifuge at 5,000xg for 5min.
2. Carefully open the tube and add 100ul of sterile water to dissolve the DNA.
3. Close the tube and incubate for 10 minutes at room temperature.
4. Briefly vortex the tube and then do a quick spin (less than 5000xg) to concentrate the liquid at the bottom.
5. Store the suspended plasmid at -20°C. The DNA is stable for at least one year from date of shipping when stored at -20°C.

RefSeq: [NM\\_001135208.1](#), [NP\\_001128680.1](#)

RefSeq Size: 662 bp

RefSeq ORF: 429 bp

Locus ID: 2286

UniProt ID: [P26885](#)

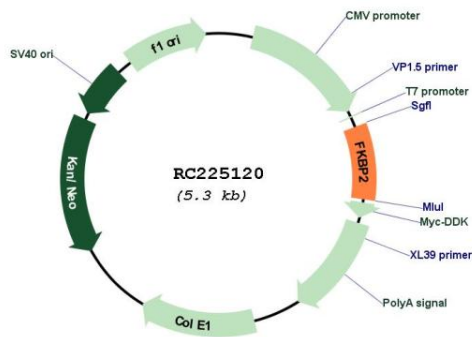
Cytogenetics: 11q13.1

Protein Families: Druggable Genome

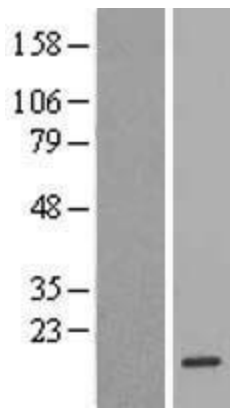
MW: 15.6 kDa

**Gene Summary:** The protein encoded by this gene is a member of the immunophilin protein family, which play a role in immunoregulation and basic cellular processes involving protein folding and trafficking. This encoded protein is a cis-trans prolyl isomerase that binds the immunosuppressants FK506 and rapamycin. It is thought to function as an ER chaperone and may also act as a component of membrane cytoskeletal scaffolds. Multiple alternatively spliced variants, encoding the same protein, have been identified. [provided by RefSeq, Sep 2008]

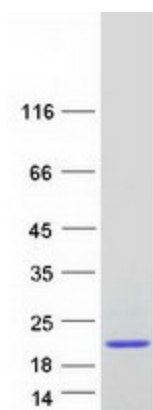
**Product images:**



Circular map for RC225120



Western blot validation of overexpression lysate (Cat# [LY427591]) using anti-DDK antibody (Cat# [TA50011-100]). Left: Cell lysates from untransfected HEK293T cells; Right: Cell lysates from HEK293T cells transfected with RC225120 using transfection reagent MegaTran 2.0 (Cat# [TT210002]).



Coomassie blue staining of purified FKBP2 protein (Cat# [TP325120]). The protein was produced from HEK293T cells transfected with FKBP2 cDNA clone (Cat# RC225120) using MegaTran 2.0 (Cat# [TT210002]).