

Product datasheet for RC225091

C19orf69 (ERICH4) (NM_001130514) Human Tagged ORF Clone

Product data:

Product Type:	Expression Plasmids
Product Name:	C19orf69 (ERICH4) (NM_001130514) Human Tagged ORF Clone
Tag:	Myc-DDK
Symbol:	C19orf69
Synonyms:	C19orf69
Mammalian Cell Selection:	Neomycin
Vector:	pCMV6-Entry (PS100001)
E. coli Selection:	Kanamycin (25 ug/mL)
ORF Nucleotide Sequence:	>RC225091 representing NM_001130514 Red=Cloning site Blue=ORF Green=Tags(s)

TTTTGTAATACGACTCACTATAGGGCGGCCGGAATTCGTCGACTGGATCCGGTACCGAGGAGATCTGCC
 GCCCGCATCGCC

ATGGAAGTGTGGAGGCAGCTGAATCAGGCTGGACTGGTGCCTCCGGGGCTGGGCCACCCCCCAGGCC
 TGAGGGAGGTCTCCCACTGGAATCCCTGGTCAGACCCTCAGGACTGCAGGGGCAGACACTGGAGGTGC
 CTGCGATAGTCTGCTGTGGATCAGGGAGGAGCTGGGGAACCTGCGCCGAGTGGATGTCCAGCTGCTGGGA
 CAGCTGTGCAGCCTGGGGCTGGAGATGGGGCGCTGCGGGAGGAAGTGGTCACCATATTGGAGGAGGAGG
 AGGAGAGCAGCAAGGAAGAGGAGGAGGATCAAGAGCCCCAGAGGAAGCAGGAGGAGGAACACCTGGAGGC
 CTGCCAGCCCCACATCCACCTGACTTTGAGATGATGATC

ACGCGTACGCGGCCGCTCGAGCAGAACTCATCTCAGAAGAGGATCTGGCAGCAAATGATATCCTGGATT
 ACAAGGATGACGACGATAAGGTTTAA

Protein Sequence:	>RC225091 representing NM_001130514 Red=Cloning site Green=Tags(s)
	MELWRQLNQAGLVPPGLGPPQALREVSPVEIPGQTLRTAGADTGACDSSLWIREELGNLRRVDVQLLG QLCSLGLGEMGALREELVTILEEEEESSKEEEDQEPQRKQEEHLEACPAPHPDFEMMI

TRTRPLEQKLISEEDLAANDILDYKDDDDKV

Chromatograms: https://cdn.origene.com/chromatograms/mk8033_g04.zip

Restriction Sites: SgfI-MluI



[View online »](#)

Cloning Scheme:


ACCN: NM_001130514

ORF Size: 390 bp

OTI Disclaimer: The molecular sequence of this clone aligns with the gene accession number as a point of reference only. However, individual transcript sequences of the same gene can differ through naturally occurring variations (e.g. polymorphisms), each with its own valid existence. This clone is substantially in agreement with the reference, but a complete review of all prevailing variants is recommended prior to use. [More info](#)

OTI Annotation: This clone was engineered to express the complete ORF with an expression tag. Expression varies depending on the nature of the gene.

Components: The ORF clone is ion-exchange column purified and shipped in a 2D barcoded Matrix tube containing 10ug of transfection-ready, dried plasmid DNA (reconstitute with 100 ul of water).

Reconstitution Method:

1. Centrifuge at 5,000xg for 5min.
2. Carefully open the tube and add 100ul of sterile water to dissolve the DNA.
3. Close the tube and incubate for 10 minutes at room temperature.
4. Briefly vortex the tube and then do a quick spin (less than 5000xg) to concentrate the liquid at the bottom.
5. Store the suspended plasmid at -20°C. The DNA is stable for at least one year from date of shipping when stored at -20°C.

Note: Plasmids are not sterile. For experiments where strict sterility is required, filtration with 0.22um filter is required.

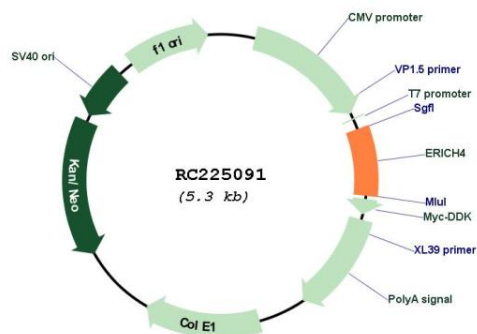
RefSeq: [NM_001130514.3](#)

RefSeq ORF: 393 bp

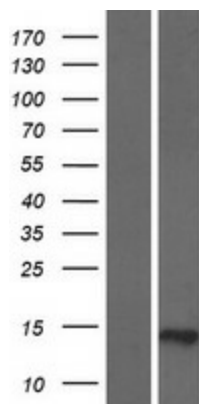
Locus ID: 100170765

UniProt ID: A6NGS2
 Cytogenetics: 19q13.2
 MW: 14.3 kDa

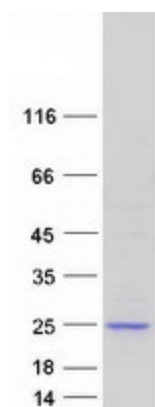
Product images:



Circular map for RC225091



Western blot validation of overexpression lysate (Cat# [LY427223]) using anti-DDK antibody (Cat# [TA50011-100]). Left: Cell lysates from untransfected HEK293T cells; Right: Cell lysates from HEK293T cells transfected with RC225091 using transfection reagent MegaTran 2.0 (Cat# [TT210002]).



Coomassie blue staining of purified ERICH4 protein (Cat# [TP325091]). The protein was produced from HEK293T cells transfected with ERICH4 cDNA clone (Cat# RC225091) using MegaTran 2.0 (Cat# [TT210002]).