

Product datasheet for **RC225086**

KCNE1 (NM_001127668) Human Tagged ORF Clone

Product data:

Product Type: Expression Plasmids
Product Name: KCNE1 (NM_001127668) Human Tagged ORF Clone
Tag: Myc-DDK
Symbol: KCNE1
Synonyms: ISK; JLNS; JLNS2; LQT2/5; LQT5; MinK
Mammalian Cell Selection: Neomycin
Vector: pCMV6-Entry (PS100001)
E. coli Selection: Kanamycin (25 ug/mL)
ORF Nucleotide Sequence: >RC225086 representing NM_001127668
Red=Cloning site Blue=ORF Green=Tags(s)

TTTTGTAATACGACTCACTATAGGGCGGCCGGAATTCGTCGACTGGATCCGGTACCGAGGAGATCTGCC
GCC**CGATCGCC**

ATGATCCTGTCTAACACCACAGCGGTGACGCCCTTCTGACCAAGCTGTGGCAGGAGACAGTTCAGCAGG
GTGGCAACATGTCGGGCTGGCCCGCAGGTCCCCCGCAGCAGTGACGGCAAGCTGGAGGCCCTCTACGT
CCTCATGGTACTGGGATTCTTCGGCTTCTCACCTGGGCATCATGCTGAGCTACATCCGCTCCAAGAAG
CTGGAGCACTCGAACGACCCATTCAACGTCTACATCGAGTCCGATGCCTGGCAAGAGAAGGACAAGGCCT
ATGTCCAGGCCCGGTCTGGAGAGCTACAGGTCGTGCTATGTCGTTGAAAACCATCTGGCCATAGAACA
ACCAACACACACCTTCTGAGACGAAGCCTTCCCCA

ACGCGTACGCGGCCGCTCGAGCAGAACTCATCTCAGAAGAGGATCTGGCAGCAAATGATATCCTGGATT
ACAAGGATGACGACGATAAGGTTTAA

Protein Sequence: >RC225086 representing NM_001127668
Red=Cloning site Green=Tags(s)
MILSNTTAVTPFLTKLWQETVQQGNMSGLARRSPRSSDGKLEALYVLMVLGFFGFFTLGIMLSYIRSKK
LEHSNDPFNVYIESDAWQEKDKAYVQARVLESYRSCYVVENHLAIEQPNTLHPETKPSF

TRTRPLEQKLISEEDLAANDILDYKDDDDKV

Chromatograms: https://cdn.origene.com/chromatograms/mk8073_h11.zip

Restriction Sites: SgfI-MluI



[View online »](#)

Note: Plasmids are not sterile. For experiments where strict sterility is required, filtration with 0.22um filter is required.

RefSeq: [NM_001127668.3](#)

RefSeq ORF: 390 bp

Locus ID: 3753

UniProt ID: [P15382](#)

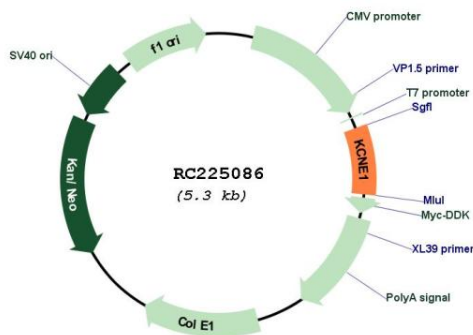
Cytogenetics: 21q22.12

Protein Families: Druggable Genome, Ion Channels: Other, Transmembrane

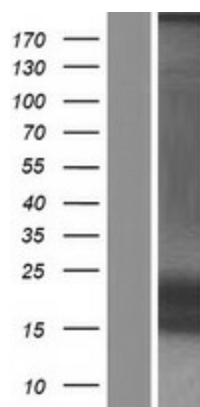
MW: 14.5 kDa

Gene Summary: The product of this gene belongs to the potassium channel KCNE family. Potassium ion channels are essential to many cellular functions and show a high degree of diversity, varying in their electrophysiologic and pharmacologic properties. This gene encodes a transmembrane protein known to associate with the product of the KVLQT1 gene to form the delayed rectifier potassium channel. Mutation in this gene are associated with both Jervell and Lange-Nielsen and Romano-Ward forms of long-QT syndrome. Alternatively spliced transcript variants encoding the same protein have been identified. [provided by RefSeq, Jul 2008]

Product images:



Circular map for RC225086



Western blot validation of overexpression lysate (Cat# [LY426845]) using anti-DDK antibody (Cat# [TA50011-100]). Left: Cell lysates from untransfected HEK293T cells; Right: Cell lysates from HEK293T cells transfected with RC225086 using transfection reagent MegaTran 2.0 (Cat# [TT210002]).