

## Product datasheet for **RC225056**

### Laminin alpha 4 (LAMA4) (NM\_001105209) Human Tagged ORF Clone

#### Product data:

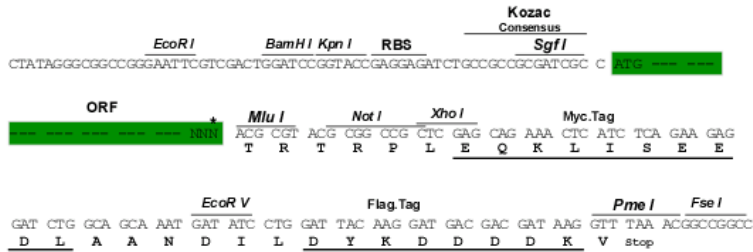
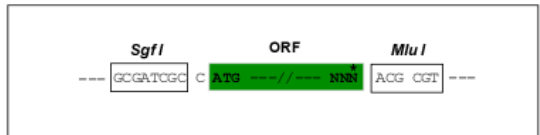
Product Type:	Expression Plasmids
Product Name:	Laminin alpha 4 (LAMA4) (NM_001105209) Human Tagged ORF Clone
Tag:	Myc-DDK
Symbol:	LAMA4
Synonyms:	CMD1JJ; LAMA3; LAMA4*-1
Vector:	pCMV6-Entry (PS100001)
E. coli Selection:	Kanamycin (25 ug/mL)
Cell Selection:	Neomycin
ORF Nucleotide Sequence:	>RC225056 representing NM_001105209 Red=Cloning site Blue=ORF Green=Tags(s)  TTTTGTAATACGACTCACTATAGGGCGGCCGGAATTCGTCGACTGGATCCGGTACCGAGGAGATCTGCC GCC <b>CGATCGCC</b>  ATGGCTTTGAGCTCAGCCTGGCGCTCGGTTCTGCCTCTGTGGCTCCTCTGGAGCGCTGCCTGCTCCCGG CCGCGTCCGGGGACGACAACGTTTTCTTTGACATTGAAGGGAGCTCAGCGGTTGCCAGGCAAGACCC GCCTGAGACGAGCGAACCCGCGTGGCTCTGGGACGCCTGCCGCCTGCGGCCGAGGTACAGTGTCCCTGC CATTGCCACCCTGCTGGGGCACCTGCGCCCCGCGGGCTGTGCCACACTCGTCCTTCTCTCTCTCCGC CTCTTCTCTCCCCAGTGCCTGAGAGTTTCACTGGGCTAGGTCAGTTCGAAACTTGAATAAAGAG TTTTCTTTG  ACGCGTACGCGGCCGCTCGAGCAGAACTCATCTCAGAAGAGGATCTGGCAGCAATGATATCCTGGATT ACAAGGATGACGACGATAAGGTTTAA
Protein Sequence:	>RC225056 representing NM_001105209 Red=Cloning site Green=Tags(s)  MALSSAWRSVLPWLWLSAACSRAASGDDNAPFDIEGSSAVGRQDPETSEPRVALGRLPPAAEVQCPC HCHPAGAPAPRAVPHSSFSLSPPLSSPQCLESFTWARSVRKLEIKSFPL  TRTRPLEQKLI SEEDLAANDILDYKDDDDKV
Restriction Sites:	Sgfl-MluI



[View online »](#)

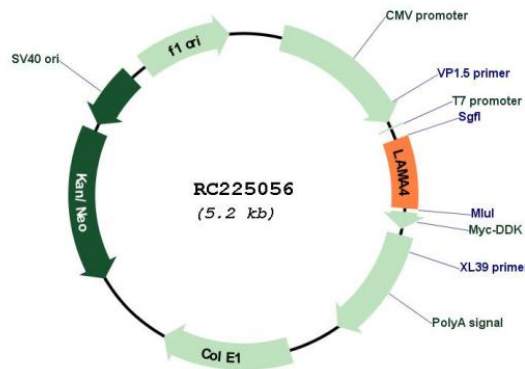
Cloning Scheme:

Cloning sites used for ORF Shuttling:



\* The last codon before the Stop codon of the ORF

Plasmid Map:



ACCN: NM\_001105209

ORF Size: 360 bp

OTI Disclaimer: The molecular sequence of this clone aligns with the gene accession number as a point of reference only. However, individual transcript sequences of the same gene can differ through naturally occurring variations (e.g. polymorphisms), each with its own valid existence. This clone is substantially in agreement with the reference, but a complete review of all prevailing variants is recommended prior to use. [More info](#)

<b>OTI Annotation:</b>	This clone was engineered to express the complete ORF with an expression tag. Expression varies depending on the nature of the gene.
<b>Components:</b>	The ORF clone is ion-exchange column purified and shipped in a 2D barcoded Matrix tube containing 10ug of transfection-ready, dried plasmid DNA (reconstitute with 100 ul of water).
<b>Reconstitution Method:</b>	<ol style="list-style-type: none"><li>1. Centrifuge at 5,000xg for 5min.</li><li>2. Carefully open the tube and add 100ul of sterile water to dissolve the DNA.</li><li>3. Close the tube and incubate for 10 minutes at room temperature.</li><li>4. Briefly vortex the tube and then do a quick spin (less than 5000xg) to concentrate the liquid at the bottom.</li><li>5. Store the suspended plasmid at -20°C. The DNA is stable for at least one year from date of shipping when stored at -20°C.</li></ol>
<b>RefSeq:</b>	<a href="#">NM_001105209.2</a> , <a href="#">NP_001098679.1</a>
<b>RefSeq Size:</b>	800 bp
<b>RefSeq ORF:</b>	363 bp
<b>Locus ID:</b>	3910
<b>UniProt ID:</b>	<a href="#">Q16363</a>
<b>Cytogenetics:</b>	6q21
<b>Protein Families:</b>	Druggable Genome, Secreted Protein
<b>Protein Pathways:</b>	ECM-receptor interaction, Focal adhesion, Pathways in cancer, Small cell lung cancer
<b>MW:</b>	12.8 kDa

**Gene Summary:**

Laminins, a family of extracellular matrix glycoproteins, are the major noncollagenous constituent of basement membranes. They have been implicated in a wide variety of biological processes including cell adhesion, differentiation, migration, signaling, neurite outgrowth and metastasis. Laminins are composed of 3 non identical chains: laminin alpha, beta and gamma (formerly A, B1, and B2, respectively) and they form a cruciform structure consisting of 3 short arms, each formed by a different chain, and a long arm composed of all 3 chains. Each laminin chain is a multidomain protein encoded by a distinct gene. Several isoforms of each chain have been described. Different alpha, beta and gamma chain isomers combine to give rise to different heterotrimeric laminin isoforms which are designated by Arabic numerals in the order of their discovery, i.e. alpha1beta1gamma1 heterotrimer is laminin 1. The biological functions of the different chains and trimer molecules are largely unknown, but some of the chains have been shown to differ with respect to their tissue distribution, presumably reflecting diverse functions in vivo. This gene encodes the alpha chain isoform laminin, alpha 4. The domain structure of alpha 4 is similar to that of alpha 3, both of which resemble truncated versions of alpha 1 and alpha 2, in that approximately 1,200 residues at the N-terminus (domains IV, V and VI) have been lost. Laminin, alpha 4 contains the C-terminal G domain which distinguishes all alpha chains from the beta and gamma chains. The RNA analysis from adult and fetal tissues revealed developmental regulation of expression, however, the exact function of laminin, alpha 4 is not known. Tissue-specific utilization of alternative polyA-signal has been described in literature. Alternative splicing results in multiple transcript variants encoding distinct isoforms. [provided by RefSeq, Aug 2011]