

## Product datasheet for **RC225054**

### IGFL2 (NM\_001135113) Human Tagged ORF Clone

#### Product data:

**Product Type:** Expression Plasmids  
**Product Name:** IGFL2 (NM\_001135113) Human Tagged ORF Clone  
**Tag:** Myc-DDK  
**Symbol:** IGFL2  
**Synonyms:** UNQ645; VPRI645  
**Mammalian Cell Selection:** Neomycin  
**Vector:** pCMV6-Entry (PS100001)  
**E. coli Selection:** Kanamycin (25 ug/mL)  
**ORF Nucleotide Sequence:** >RC225054 representing NM\_001135113  
**Red=Cloning site Blue=ORF Green=Tags(s)**

TTTTGTAATACGACTCACTATAGGGCGCCGGGAATTCGTGCGACTGGATCCGGTACCGAGGAGATCTGCC  
GCC**CGATCGCC**

ATGGTGCCAGAAATCTTCGCTCCTGCTTATGTGTCAGTCTGTCTCCTCCTTGTGTCCAAGGGAAGTCA  
TCGCTCCCGCTGGCTCAGAACCATGGCTGTGCCAGCCGGCACCCAGGTGTGGAGACAAGATCTACAACCC  
CTTGGAGCAGTGTGTTACAATGACGCCATCGTGTCCCTGAGCGAGACCCGCAATGTGGTCCCCCTGC  
ACCTTCTGGCCCTGCTTTGAGCTCTGCTGTCTTGATTCCCTTTGGCCTCACAAACGATTTTGTGTGAAGC  
TGAAGGTTCAAGGTGTGAATCCAGTGCCACTCATCTCCATCTCCAGTAAATGTGAAAGCAGAAGACG  
TTTTCC

**ACGCGT**ACGCGGCCGCTCGAGCAGAAACTCATCTCAGAAGAGGATCTGGCAGCAAATGATATCCTGGATT  
ACAAGGATGACGACGATAAGGTTTAA

**Protein Sequence:** >RC225054 representing NM\_001135113  
**Red=Cloning site Green=Tags(s)**  
MVPRI FAPAYVSVCLLLLCPREVIAPAGSEPWLCQPAPRCGDKIYNPLEQCCYNDAIVSLSETRQCGPPC  
TFWPCFELCCLDSFGLTNDFVVKLKVQGVNSQCHSSPISSKCESRRRFP

**TR**TRPLEQKLISEEDLAANDILDYKDDDDKV

**Chromatograms:** [https://cdn.origene.com/chromatograms/mk8006\\_d10.zip](https://cdn.origene.com/chromatograms/mk8006_d10.zip)

**Restriction Sites:** SgfI-MluI



[View online »](#)

**Cloning Scheme:**


**ACCN:** NM\_001135113

**ORF Size:** 357 bp

**OTI Disclaimer:** The molecular sequence of this clone aligns with the gene accession number as a point of reference only. However, individual transcript sequences of the same gene can differ through naturally occurring variations (e.g. polymorphisms), each with its own valid existence. This clone is substantially in agreement with the reference, but a complete review of all prevailing variants is recommended prior to use. [More info](#)

**OTI Annotation:** This clone was engineered to express the complete ORF with an expression tag. Expression varies depending on the nature of the gene.

**Components:** The ORF clone is ion-exchange column purified and shipped in a 2D barcoded Matrix tube containing 10ug of transfection-ready, dried plasmid DNA (reconstitute with 100 ul of water).

- Reconstitution Method:**
1. Centrifuge at 5,000xg for 5min.
  2. Carefully open the tube and add 100ul of sterile water to dissolve the DNA.
  3. Close the tube and incubate for 10 minutes at room temperature.
  4. Briefly vortex the tube and then do a quick spin (less than 5000xg) to concentrate the liquid at the bottom.
  5. Store the suspended plasmid at -20°C. The DNA is stable for at least one year from date of shipping when stored at -20°C.

**RefSeq:** [NM\\_001135113.2](#)

**RefSeq ORF:** 360 bp

**Locus ID:** 147920

**UniProt ID:** [Q6UWQ7](#)

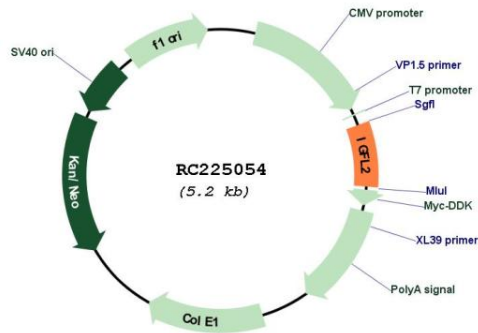
**Cytogenetics:** 19q13.32

**Protein Families:** Secreted Protein

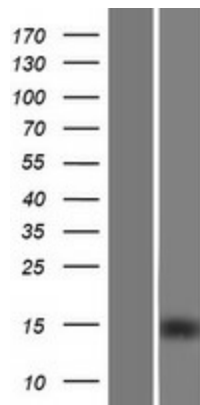
**MW:** 13.1 kDa

**Gene Summary:** IGFL2 belongs to the insulin-like growth factor (IGF; see MIM 147440) family of signaling molecules that play critical roles in cellular energy metabolism and in growth and development, especially prenatal growth (Emtage et al., 2006 [PubMed 16890402]).[supplied by OMIM, Mar 2008]

**Product images:**



Circular map for RC225054



Western blot validation of overexpression lysate (Cat# [LY427558]) using anti-DDK antibody (Cat# [TA50011-100]). Left: Cell lysates from untransfected HEK293T cells; Right: Cell lysates from HEK293T cells transfected with RC225054 using transfection reagent MegaTran 2.0 (Cat# [TT210002]).