

Product datasheet for **RC225042**

PLAC8 (NM_001130716) Human Tagged ORF Clone

Product data:

Product Type: Expression Plasmids
Product Name: PLAC8 (NM_001130716) Human Tagged ORF Clone
Tag: Myc-DDK
Symbol: PLAC8
Synonyms: C15; DGIC; onzin; PNAS-144
Mammalian Cell Selection: Neomycin
Vector: pCMV6-Entry (PS100001)
E. coli Selection: Kanamycin (25 ug/mL)
ORF Nucleotide Sequence: >RC225042 representing NM_001130716
Red=Cloning site Blue=ORF Green=Tags(s)

TTTTGTAATACGACTCACTATAGGGCGGCCGGAATTCGTCGACTGGATCCGGTACCGAGGAGATCTGCC
GCC**CGATCGCC**

ATGCAAGCTCAGGCGCCGGTGGTCGTTGTGACCCAACCTGGAGTCGGTCCCGGTCCGGCCCCCAGA
CTCCAAGTGGCAGACAGGCATGTGTGACTGTTTCAGCGACTGCGGAGTCTGTCTCTGTGGC
ACATTTTGTTC
CCCGTGCCTTGGGTGTCAAGTTCAGCTGATATGAATGAATGCTGTCTGTGTGGAACAAGCGT
CGCAATG
AGGACTCTACAGGACCCGATATGGCATCCCTGGATCTATTTGTGATGACTATATGGCAACTCT
TTTGCT
GTCCTCATTGACTCTTTGCCAAATCAAGAGAGATATCAACAGAAGGAGCCATGCGTACTTTC

ACGCGTACGCGGCCGCTCGAGCAGAAACTCATCTCAGAAGAGGATCTGGCAGCAAATGATATCCTGGATT
ACAAGGATGACGACGATAAGGTTTAA

Protein Sequence: >RC225042 representing NM_001130716
Red=Cloning site Green=Tags(s)
MQAQAPVVVVTQPGVGPAPQNSNWQTMCDGCFSDCGVCLCGTFCFPCLGCQVAADMNECCLCGTSVAM
RTLYRTRYGIPGSICDDYMATLCCPHCTLCQIKRDINRRRAMRTF

TRTRPLEQKLISEEDLAANDILDYKDDDDKV

Chromatograms: https://cdn.origene.com/chromatograms/mg2877_h09.zip

Restriction Sites: Sgfl-Mlul

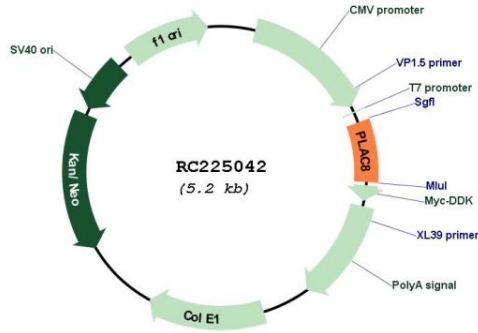


[View online »](#)

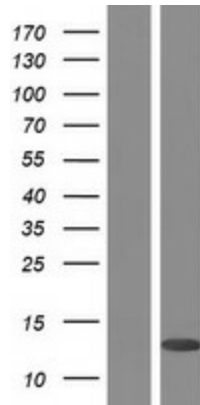
Cytogenetics: 4q21.22

MW: 12.3 kDa

Product images:



Circular map for RC225042



Western blot validation of overexpression lysate (Cat# [LY427263]) using anti-DDK antibody (Cat# [TA50011-100]). Left: Cell lysates from untransfected HEK293T cells; Right: Cell lysates from HEK293T cells transfected with RC225042 using transfection reagent MegaTran 2.0 (Cat# [TT210002]).