

Product datasheet for RC225004

SYCE3 (NM_001123225) Human Tagged ORF Clone

Product data:

Product Type: Expression Plasmids
Product Name: SYCE3 (NM_001123225) Human Tagged ORF Clone
Tag: Myc-DDK
Symbol: SYCE3
Synonyms: C22orf41; THEG2
Mammalian Cell Selection: Neomycin
Vector: pCMV6-Entry (PS100001)
E. coli Selection: Kanamycin (25 ug/mL)
ORF Nucleotide Sequence: >RC225004 representing NM_001123225
 Red=Cloning site Blue=ORF Green=Tags(s)

TTTGTAAATACGACTCACTATAGGGCGGCCGGAATTCGTCGACTGGATCCGGTACCGAGGAGATCTGCC
 GCCGCGATCGCC

ATGGATGATGCTGACCCTGAGGAAAGAACTATGACAACATGCTGAAAATGCTGTCAGATCTGAATAAGG
 ACTTGAAAAGCTATTAGAAGAGATGGAGAAAATCTCAGTGCAGGCGACCTGGATGGCCTATGACATGGT
 GGTGATGCGCACCAACCCTACGCTGGCCGAGTCCATGCGTCGGCTGGAGGATGCCTTCGTCAACTGCAAG
 GAGGAGATGGAGAAGAACTGGCAAGAGCTGCTGCATGAGACCAAGCAAAGGCTG

ACGCGTACGCGGCCGCTCGAGCAGAACTCATCTCAGAAGAGGATCTGGCAGCAAATGATATCCTGGATT
 ACAAGGATGACGACGATAAGGTTAA

Protein Sequence: >RC225004 representing NM_001123225
 Red=Cloning site Green=Tags(s)

MDDADPEERNYDNMLKMLSDLNKDLEKLLEEMEKISVQATWMAYDMVVMRTNPTLAESMRRLDAFVNCK
 EEMKQWQELLHETKQRL

TRTRPLEQKLISEEDLAANDILDYKDDDDKV

Chromatograms: https://cdn.origene.com/chromatograms/mk8044_g01.zip

Restriction Sites: SgfI-MluI



[View online »](#)

Cloning Scheme:



ACCN: NM_001123225

ORF Size: 264 bp

OTI Disclaimer: The molecular sequence of this clone aligns with the gene accession number as a point of reference only. However, individual transcript sequences of the same gene can differ through naturally occurring variations (e.g. polymorphisms), each with its own valid existence. This clone is substantially in agreement with the reference, but a complete review of all prevailing variants is recommended prior to use. [More info](#)

OTI Annotation: This clone was engineered to express the complete ORF with an expression tag. Expression varies depending on the nature of the gene.

Components: The ORF clone is ion-exchange column purified and shipped in a 2D barcoded Matrix tube containing 10ug of transfection-ready, dried plasmid DNA (reconstitute with 100 ul of water).

Reconstitution Method:

1. Centrifuge at 5,000xg for 5min.
2. Carefully open the tube and add 100ul of sterile water to dissolve the DNA.
3. Close the tube and incubate for 10 minutes at room temperature.
4. Briefly vortex the tube and then do a quick spin (less than 5000xg) to concentrate the liquid at the bottom.
5. Store the suspended plasmid at -20°C. The DNA is stable for at least one year from date of shipping when stored at -20°C.

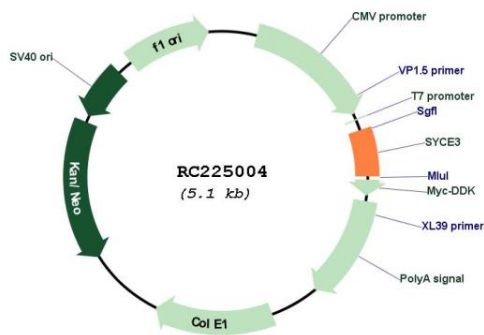
Note: Plasmids are not sterile. For experiments where strict sterility is required, filtration with 0.22um filter is required.

RefSeq: [NM_001123225.3](#)

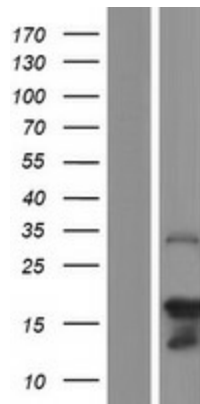
RefSeq ORF: 267 bp

Locus ID:	644186
UniProt ID:	A1L190
Cytogenetics:	22q13.33
MW:	10.4 kDa
Gene Summary:	Major component of the transverse central element of synaptonemal complexes (SCS), formed between homologous chromosomes during meiotic prophase. Required for chromosome loading of the central element-specific SCS proteins, and for initiating synapsis between homologous chromosomes. Chromosome loading appears to require SYCP1. Required for fertility.[UniProtKB/Swiss-Prot Function]

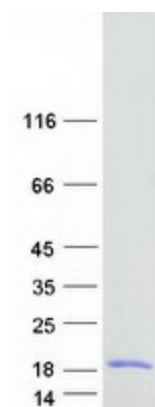
Product images:



Circular map for RC225004



Western blot validation of overexpression lysate (Cat# [LY426602]) using anti-DDK antibody (Cat# [TA50011-100]). Left: Cell lysates from untransfected HEK293T cells; Right: Cell lysates from HEK293T cells transfected with RC225004 using transfection reagent MegaTran 2.0 (Cat# [TT210002]).



Coomassie blue staining of purified SYCE3 protein (Cat# [TP325004]). The protein was produced from HEK293T cells transfected with SYCE3 cDNA clone (Cat# RC225004) using MegaTran 2.0 (Cat# [TT210002]).