

Product datasheet for **RC224998**

LCE6A (NM_001128600) Human Tagged ORF Clone

Product data:

Product Type: Expression Plasmids
Product Name: LCE6A (NM_001128600) Human Tagged ORF Clone
Tag: Myc-DDK
Symbol: LCE6A
Synonyms: C1orf44
Mammalian Cell Selection: Neomycin
Vector: pCMV6-Entry (PS100001)
E. coli Selection: Kanamycin (25 ug/mL)
ORF Nucleotide Sequence: >RC224998 representing NM_001128600
Red=Cloning site **Blue**=ORF **Green**=Tags(s)

TTTGTAAATACGACTCACTATAGGGCGGCCGGAATTCGTCGACTGGATCCGGTACCGAGGAGATCTGCC
GCC**CGATCGC**

ATGTCACAGCAGAAGCAGCAATCTTGAAGCCTCCAAATGTTCCCAAATGCTCCCTCCCCAAAGATCAA
ACCCCTGCCTAGCTCCCTACTCGACTCCTTGTGGTGCTCCCATTCAGAAGGTTGTCATTCCAGTTCCCA
AAGGCCTGAGGTTGAGAAGCCTAGGAGGGCTCGTCAAAGCTGCGCTGCCTAAGTAGGGGCACAACCTAC
CACTGCAAAGAGGAAGAGTGTGAAGGCGAC

ACGCGTACGCGGCCGCTCGAGCAGAACTCATCTCAGAAGAGGATCTGGCAGCAAATGATATCCTGGATT
ACAAGGATGACGACGATAAGGTTTAA

Protein Sequence: >RC224998 representing NM_001128600
Red=Cloning site **Green**=Tags(s)

MSQQKQSWKPPNVPKCSPPQRSNPCLAPYSTPCGAPHSEGHSSQRPEVQKPRRARQKLRLCLSRGTTY
HKEEECEGD

TRTRPLE**QKL**ISEEDLAANDILDYKDDDDKV

Chromatograms: https://cdn.origene.com/chromatograms/mk8044_g02.zip

Restriction Sites: SgfI-MluI



[View online »](#)

Cloning Scheme:


ACCN: NM_001128600

ORF Size: 240 bp

OTI Disclaimer: The molecular sequence of this clone aligns with the gene accession number as a point of reference only. However, individual transcript sequences of the same gene can differ through naturally occurring variations (e.g. polymorphisms), each with its own valid existence. This clone is substantially in agreement with the reference, but a complete review of all prevailing variants is recommended prior to use. [More info](#)

OTI Annotation: This clone was engineered to express the complete ORF with an expression tag. Expression varies depending on the nature of the gene.

Components: The ORF clone is ion-exchange column purified and shipped in a 2D barcoded Matrix tube containing 10ug of transfection-ready, dried plasmid DNA (reconstitute with 100 ul of water).

Reconstitution Method:

1. Centrifuge at 5,000xg for 5min.
2. Carefully open the tube and add 100ul of sterile water to dissolve the DNA.
3. Close the tube and incubate for 10 minutes at room temperature.
4. Briefly vortex the tube and then do a quick spin (less than 5000xg) to concentrate the liquid at the bottom.
5. Store the suspended plasmid at -20°C. The DNA is stable for at least one year from date of shipping when stored at -20°C.

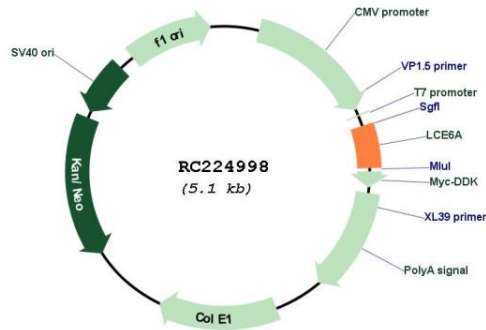
Note: Plasmids are not sterile. For experiments where strict sterility is required, filtration with 0.22um filter is required.

RefSeq: [NM_001128600.2](#)

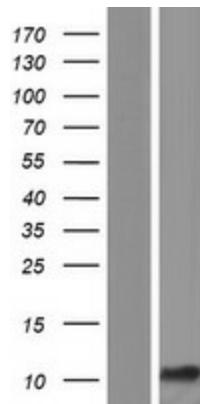
RefSeq ORF: 243 bp

Locus ID: 448835
UniProt ID: [A0A183](#)
Cytogenetics: 1q21.3
MW: 8.8 kDa
Gene Summary: Precursors of the cornified envelope of the stratum corneum.[UniProtKB/Swiss-Prot Function]

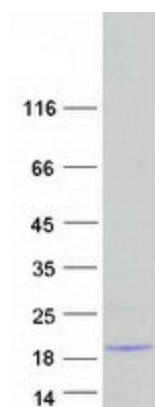
Product images:



Circular map for RC224998



Western blot validation of overexpression lysate (Cat# [LY426969]) using anti-DDK antibody (Cat# [TA50011-100]). Left: Cell lysates from untransfected HEK293T cells; Right: Cell lysates from HEK293T cells transfected with RC224998 using transfection reagent MegaTran 2.0 (Cat# [TT210002]).



Coomassie blue staining of purified LCE6A protein (Cat# [TP324998]). The protein was produced from HEK293T cells transfected with LCE6A cDNA clone (Cat# RC224998) using MegaTran 2.0 (Cat# [TT210002]).