

Product datasheet for **RC224971**

CLN3 (NM_001042432) Human Tagged ORF Clone

Product data:

Product Type:	Expression Plasmids
Product Name:	CLN3 (NM_001042432) Human Tagged ORF Clone
Tag:	Myc-DDK
Symbol:	CLN3
Synonyms:	BTN1; BTS; JNCL
Mammalian Cell Selection:	Neomycin
Vector:	pCMV6-Entry (PS100001)
E. coli Selection:	Kanamycin (25 ug/mL)



[View online »](#)

ORF Nucleotide Sequence:

>RC224971 ORF sequence
 Red=Cloning site Blue=ORF Green=Tags(s)

TTTTGTAATACGACTCACTATAGGGCGGCCGGGAATTCGTCGACTGGATCCGGTACCGAGGAGATCTGCC
 GCC**GCGATCGCC**

ATGGGAGGCTGTGCAGGCTCGCGCGCGCTTTTCGGATTCCGAGGGGAGGAGACCGTCCCGGAGCCCC
 GGCTCCCTCTGTTGGACCATCAGGGCGCGCATTGGAAGAACGCGTGGGCTTCTGGCTGCTGGCCCTTG
 CAACAACCTCTCTTATGTGGTGTGCTGAGTGCGCCCCACGACATCCTTAGCCACAAGAGGACATCGGGA
 AACAGAGCCATGTGGACCCAGGCCAACGCCGATCCCCACAACAGCTCATCACGATTTGACTGCAACT
 CTGTCTCTACGGCTGCTGTGCTCCTGGCGGACATCCTCCACACTCGTCATCAAATTTGGTCTCCTCT
 TGGCCTTACCTGCTGCCCTACAGCCCCGGGTTCTCGTCAGTGGGATTTGTGCTGCTGGAAGCTTCGTC
 CTGTTGCCTTTTCTATTCTGTGGGACCAGCCTGTGTGGTGTGGTCTTCGCTAGCATCTCATCAGGCC
 TTGGGAGGTCACCTTCTCCTCACTGCCTTCTACCCAGGGCCGTGATCTCCTGGTGGTCTCAGG
 GACTGGGGAGCTGGGCTGCTGGGGCCCTGTCTACCTGGGCTCACCCAGGCCGGCCTCTCCCTCAG
 CAGACCCTGCTGCCATGCTGGGTATCCCTGCCCTGCTGCTGGCCAGCTATTTCTTGTGCTCACATCTC
 CTGAGGCCAGGACCCTGGAGGGGAAGAAGAAGCAGAGAGCGCAGCCCGGAGCCCTCATAAGAACCGA
 GGCCCCGAGTCGAAGCCAGGCTCCAGCTCCAGCCTCTCCCTTCGGGAAAGGTGGACAGTGTCAAGGGT
 CTGCTGTGGTACATTGTTCCCTTGGTCGTAGTTTACTTTGCCGAGATTTTATTAAACAGGGACTTTTTG
 AACTCCTCTTTTTCTGGAACACTCCCTGAGTCACGCTCAGCAATACCGTGGTACCAGATGCTGTACCA
 GGCTGGCGTCTTTCCTCCGCTCTTCTCTCCGCTGCTGTGCATCCGTTTACCTGGGCCCTGGCCCTG
 CTGCAGTGCCTCAACTGGTGTCTGCTGGCAGACGTGTGGTTCGGCTTTCTGCCAAGCATCTACCTCG
 TCTTCTGATCATTCTGTATGAGGGCTCCTGGGAGGCGCAGCCTACGTGAACACCTTCCACAACATCGC
 CCTGGAGACCAGTGTAGCACCCGGGAGTTTGAATGGCGGCCACTGCATCTCTGACACACTGGGGATC
 TCCTGTGCGGGCTCCTGGCTTTCCTCTGCATGACTTCTCTGCCAGCTCTCC

ACGCGTACGCGGCCGCTCGAGCAGAACTCATCTCAGAAGAGGATCTGGCAGCAAATGATATCCTGGATT
 ACAAGGATGACGACGATAAGGTTTAA

Protein Sequence:

>RC224971 protein sequence
 Red=Cloning site Green=Tags(s)

MGGCAGSRRRFSDSEGEETVPEPRLPLLDHQGAHWKNAVGFLLGLCNNFSYVVMLSAAHDIILSHKRTSG
 NQSHVDPGPTPIPHNSSRFDCNSVSTAAVLLADILPTLVIKLLAPLGLHLLPYSRVLVSGICAAGSFV
 LVAFSHSVGTSLCGVVFASISSGLGEVTFLLSLTAFYPRAVISWSSGTGGAGLLGALSYLGLTQAGLSPQ
 QTLLSMLGIPALLLASYFLLLSPEAQDPGEEEAESAARQPLIRTEAPESKPGSSSSLRERWTVFKG
 LLWYIVPLVVVYFAEYFINQGLFELLFFWNTSLSHAQQYRWYQMLYQAGVFASRSSLRCCRIRFTWALAL
 LQCLNLVFLADVWFGFLPSIYLVFLIILYEGLLGGAAVNTFHNIALETSDHEREFAMAATCISDTLGI
 SLSGLLALPLHDFLCQLS

TRTRPLEQKLISEEDLAANDILDYKDDDDKV

Chromatograms:

https://cdn.origene.com/chromatograms/mk6128_d10.zip

Restriction Sites:

SgfI-MluI

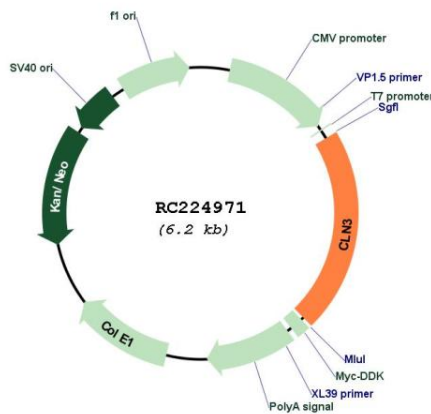
Protein Families: Druggable Genome, Transmembrane

Protein Pathways: Lysosome

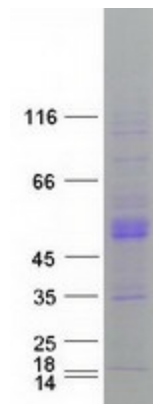
MW: 47.6 kDa

Gene Summary: This gene encodes a protein that is involved in lysosomal function. Mutations in this, as well as other neuronal ceroid-lipofuscinosis (CLN) genes, cause neurodegenerative diseases commonly known as Batten disease or collectively known as neuronal ceroid lipofuscinoses (NCLs). Many alternatively spliced transcript variants have been found for this gene. [provided by RefSeq, Jul 2008]

Product images:



Circular map for RC224971



Coomassie blue staining of purified CLN3 protein (Cat# [TP324971]). The protein was produced from HEK293T cells transfected with CLN3 cDNA clone (Cat# RC224971) using MegaTran 2.0 (Cat# [TT210002]).