

Product datasheet for RC224969

Sialoadhesin (SIGLEC1) (NM_023068) Human Tagged ORF Clone

Product data:

Product Type:	Expression Plasmids
Product Name:	Sialoadhesin (SIGLEC1) (NM_023068) Human Tagged ORF Clone
Tag:	Myc-DDK
Symbol:	Sialoadhesin
Synonyms:	CD169; SIGLEC-1; SN
Mammalian Cell Selection:	Neomycin
Vector:	pCMV6-Entry (PS100001)
E. coli Selection:	Kanamycin (25 ug/mL)
ORF Nucleotide Sequence:	>RC224969 representing NM_023068. Blue=ORF Red=Cloning site Green=Tag(s)

```
GCTCGTTTGTAGTGAACCGTCAGAATTTTGTAAACGACTACTATAGGGCGCCGGGAATTCGTCGACTG
GATCCGGTACCGAGGAGATCTGCCGCCGCGATCGCC
ATGGGCTTCTTGCCCAAGCTTCTCCTCCTGGCCTCATTCTTCCAGCAGGCCAGGCCTCATGGGCGTC
TCCAGTCCCAGGACGTGCAGGGTGTGAAGGGTCTTGCCTGCTTATCCCCTGCATCTTCAGCTTCCCT
GCCGACGTGGAGGTGCCGACGGCATCACGGCCATCTGGTACTACGACTACTCGGCCAGCGCCAGGTG
GTGAGCCACTCGGCGGACCCCAAGCTGGTGGAGGCCCGCTTCCGCGGCCGACCCGAGTTCATGGGGAAC
CCCGAGCACAGGGTGTGCAACCTGCTGCTGAAGGACCTGCAGCCCAGGACTCTGGTTCTACAACCTTC
CGTTTCGAGATCAGTGAGGTCAACCGCTGGTCAGATGTGAAAGGCACCTTGGTCACAGTAACAGAGGAG
CCAGGGTGCCACCATTGCCTCCCGGTGGAGCTTCTCGAGGGCACAGAGGTGGACTTCAACTGCCTCC
ACTCCCTACGTATGCCTGCAGGAGCAGGTGAGTGCAGTGGCAAGGCCAGGACCCTGCTCGCTCTGTC
ACCTTCAACAGCCAGAAGTTTGAGCCCACCGGCGTTCGGCCACCTGGAGACCCTCCACATGGCCATGTCC
TGGCAGGACCACGGCCGGATCCTGCGCTGCCAGCTCTCCATGGCCAATCACAGGGCTCAGAGCGAGATT
CACCTCCAAGTGAAGTATGCCCCAGGGGTGTGAAGATCCTCCTCAGCCCCTCGGGGAGGAACATCCTT
CCAGGTGAGCTGGTCACACTCACCTGCCAGGTGAACAGCAGCTACCCTGCAGTCAGTTCATTAAAGTGG
CTCAAGGATGGGTACGCTCCAACCAAGACTGGTGTGCTGCACCTGCCCCAGGACGCTGGAGCGAT
GCTGGCGTACACCTGCCAAGCTGAGAACGGCGTGGGCTCTTTGGTCTCACCCCACTCAGCCTCCAC
ATCTTCATGGCTGAGGTCCAGGTGAGCCAGCAGGTCCCATCCTGGAGAACCAGACAGTGACACTAGTC
TGCAACACACCCCAACGAGGCACCCAGTGATCTCCGCTACAGCTGGTACAAGAACCATGTCCTGCTGGAG
GATGCCCACTCCCATACCCTCCGGCTGCACTTGGCCACTAGGGCTGATACTGGCTTCTACTTCTGTGAG
GTGCAGAACGTCCATGGCAGCGAGCGCTCGGGCCCTGTCAGCGTGGTAGTCAACCACCCGCTCTCACC
CCAGTCTGACAGCCTTCTGGAGACCCAGGCGGGACTTGTGGGCATCCTTCACTGCTCTGTGGTCAGT
GAGCCCCTGGCCCACTGGTGTGTACATGGGGTCAATCCTGGCCTCCACCTCCGGGACAGTGAT
CACAGCCCAGCTTCAGTGGTACCTCTGGTCCCAACTCCCTGCGCTGGAGATCCGAGACCTGGAGGAA
ACTGACAGTGGGAGTACAAGTGTCTAGCCACCAACTCCCTTGGAAATGCAACCTTACCCTGGACTTC
```



[View online »](#)

CATGCCAATGCCGCCGTCTCCTCATCAGCCCGGCAGCCGAGGTGGTGAAGGACAGGCAGTGACTG
 AGCTGCAAGAGCGGCCTAAGCCCCACACCTGATGCCCGCTTCTCCTGGTACCTGAATGGAGCCCTGCTT
 CACGAGGGTCCCAGGCAGCAGCCTCTGCTCCCCCGGCCCTCCAGCACTGACGCCGGCTCATACCACTGC
 CGGGCCCGGGACGGCCACAGTGCCAGTGGCCCCCTTCGCGCAGCTGTTCTCACTGTGCTCTACCCCTC
 CGACAACCAACATTACCACCAGGCTGGACCTTGATGCCGCTGGGGCCGGGGCTGGACGGCAGGCCTC
 CTTTTGTGCCGTGGACAGCGACCCCCCGCCAGGCTGCAGCTGCTCCACAAGGACCGTGTGTGGCC
 ACTTCCCTGCCATCAGGGGTGGTGCAGCACCTGTGGGGCTGTCCCCACGCATGAAGTCCACAAA
 GCCCCCAACTTGCTGCGTGGAGATTCACAACCTTTGCTGGAAGAGGAGGGCTGTACCTCTGTGAG
 GCCAGCAATGCCCTGGGCAACGCCTCCACCTCAGCCACCTTCAATGGCCAGGCCACTGCTCTGGCCATT
 GCACCATCACACACACTTCAGGAGGGCACAGAAGCCAACCTGACTTGCAACGTGAGCCGGGAAGCTGCT
 GGCAGCCCTGCTAACTTCTCCTGGTTCGAAAATGGGGTGTGTGGGCCAGGGTCCCCTGGAGACCGTG
 AACTGCTGCCGTGGCCAGAAGTGTGCTGCCCTTACGCTGCCGCATCTGACTGAGGCTGTGTC
 CAGCTCTCCACTCCCGTCTCCTGAGTGTCTCTATCCCCGGACCGTCAAAGCTGTGAGCCCTCTA
 GACATGGGCCAGGGCCACATGGCTCTGTTTATCTGCAGTGTGGACAGCCGCCCTGGCCTTGTGGCC
 TTGTTCCATGGGAGCACCTCCTGGCCACCAGCCTGGGTCCCCAGGTCCCATCCCATGGTCGGTTCAG
 GCTAAGGCTGAGGCCAACTCCCTGAAGTTAGAGGTCCGAGAACTGGGCCCTGGGGACTCTGGCAGCTAC
 CGCTGTGAGGCCACAAATGTTCTTGATCATCCAACACCTCACTTCTTCCAGGTCCGAGGAGCCTGG
 GTCCAGGTGTACCATCACCTGAGCTCCAAGAGGGCCAGGCTGTGGTCTGAGCTGCCAGGTACCCACA
 GGAGTCCCAGAGGGGACCTCATATCGTTGGTATCGGATGGCCAGCCCTCCAGGAGTGCACCTCGGCC
 ACGCTCCGCTTTGAGCCATAAATTTGACACAAGCTGGGGCTATCATTGCCAAGCCAGGCCCCAGGC
 TCAGCCACCACGAGCCTAGCTGTACCCATCAGCCTCCAGTGTCTATGCCCCACGCCAGTCACTC
 ACTACCTGATGGACACAGGCCCTGGACACTGGGCCCTCCTCTGTGCCGTGTGGACAGTACCCCTCG
 GCCAGCTGCCGTGCTCCACGGGGATCGCTTGTGGCTCCACCCTACAAGTGTGGGGGACCCGAA
 GGCAAGTCTCCAGGCTGCATGTGGCTGTGGCCCAACACACTGCGTCTGGAGATCCACGGGGTATG
 CTGGAGGATGAGGGTGTCTATATCTGTGAGGCCTCCAACACCCTGGGCCAGGCCTCGGCCTCAGCTGAC
 TTCAGCGCTAAGCTGTGAATGTGCAGGTGTGGCCGGGGCTACCGTGGGGAGGGGAGCTGGTGAAC
 CTGACCTGCCTTGTGTGGACCACTACCCGGCCAGCTCACCTACACATGGTACCAGGATGGGCAGCAG
 CGCCTGGATGCCACTCCATCCCCTGCCAACGTACAGTCAAGGATGCCACCTCCTACCCTGCGGT
 GTGGGCCCCCTGGTGGGCACCCCGCCTCCTCAGACCTATCACCTTGGACGCTCTACGCGCCCCGC
 AACCTGCGCTGACCTACCTCCTGGAGAGCCATGGCGGGCAGTGGCCCTGGTACTGTGCACTGTGGAC
 AGCGCCCGCCCGCCAGCTGGCCCTCAGCCACCGGGTGCCTCTTGGCTCCTCGACAGCAGCCTCT
 GTCCCCAACACCTGCGCTGGAGCTGCGAGGGCCACAGCCAGGGATGAGGGTTTCTACAGCTGCTCT
 GCCCGCAGCCCTCTGGGCCAGGCCAACACGTCCCTGGAGCTGCGGCTGGAGGGTGTGCGGGTGTCTG
 GCTCCGGAGGCTGCCGTGCCTGAAGGTGCCCCATCACAGTGCCTGTGCGGACCCTGCTGCCACGCA
 CCCACACTCTAATTTGGTACCACAACGGTCTGTGGTGCAGGAGGGTCCAGCTGCCTCACTCTCATTC
 CTGGTGGCCACGCGGGCTCATGCAGGCGCTACTTGGCAGGCCAGGATGCCAGGGCACCCGACG
 TCCCGTCTGCTGCCCTGCAAGTCTCTATGCCCTCAGGATGCTGTCTGTCTCTTCCGGGACTCC
 AGGGCCAGATCCATGGCTGTGATACAGTGCAGTGTGGACAGTGGCCACCTGCTGAGTGGCCCTATCT
 CATGATGGCAAGGTGCTGGCCACGAGCAGCGGGGTCCACAGCTTGGCATCAGGGACAGGCCATGTCCAG
 GTGGCCCGAAACGCCCTACGGCTGCAGGTGCAAGATGTGCTGCAGGTGATGACACCTATGTTTGCACA
 GCCAAAACCTTGCTGGGCTCAATCAGCACCATCGGGCGGTTGCAGGTAGAAGGTGCACGCGTGGTGCA
 GAGCCTGGCCTGGACGTGCCTGAGGGCGCTGCCCTGAACCTCAGCTGCCGCTCCTGGGTGGCCTGGG
 CCTGTGGGCAACTCCACCTTTGCATGGTCTGGAATGACCGGGGCTGCACGCGGAGCCTGTGCCACT
 CTCGCTTACCCACGTGGCTGTGCTCAAGCTGGGATGTACCACTGCCTGGCTGAGCTCCCCTGGG
 GCTGCTGCCTCTGCTCCAGTGTGCTCCGTGTGCTCTACCCTCCAAGACGCCACCATGATGGTCTTC
 GTGGAGCCTGAGGGTGGCCTCCGGGCATCCTGGATTGCCGAGTGGACAGCGAGCCGCTCGCCAGCCTG
 ACTCTCCACCTTGGCAGTGCAGTGGTGGCTCCAGTCAAGCCAGGGTGTCTCTGCAGAGCCACACATC
 CATGCTCTGGCTTCCCCAATGCCCTGAGGGTGGACATCGAGGCCTGAGGCCAGCGACCAAGGGGAA
 TACATCTGTTCTGCCTCAAATGTCTGGGCTCTGCCTCTACCTCCACCTACTTTGGGGTCAAGCCCTG
 CACCGCCTGCATCAGTTCAGCAGCTGCTCTGGGTCTGGGACTGCTGGTGGGCCTCCTGCTCTGCTG
 TTGGGCTGGGGGCTGTACACCTGGAGAAGGAGGCGTGTGTTGTAAGCAGAGCATGGGCAGAAATTCG
 GTGGAGATGGCTTTTTCAGAAAGAGACCACGCAGCTCATTGATCCTGATGCAGCCACATGTGAGACCTCA

ACCTGTGCCCCACCCCTGGGC
 CTCGAGCAGAAACTCATCTCAGAAGAGGATCTGGCAGCAAATGATATCCTGGATTACAAGGATGACGAC
 GATAAGGTTTAAACGGCCGGCCGGTCATAGCTGT

Protein Sequence:

>Peptide sequence encoded by RC224969
 Blue=ORF Red=Cloning site Green=Tag(s)

MGFLPKLLLLASFFPAGQASWGVSSPQDVQGVKGSCLLIPCIFSFADVEVPDGITAIWYYDYSGQRQV
 VSHSADPKLVEARFRGRTEFMGNPEHRVCNLLKDLQPEDSGSYNFRFEI SEVNRWSDVKGLTVTTEE
 PRVPTIASPVELLEGTEVDFNCSTPYVCLQEQVRLQWQQDPARSVTFNSQKFEPTGVGHLETLHMAMS
 WQDHGRILRCQLSMANHRAQSEIHLQVKYAPRGVKILLSPSGRNILPGELVTLTCQVNSSYPVSSIKW
 LKDGVRQLTKTGVHLHPQAAWSDAGVYTQCAENGVGSLVSPPI SLHIFMAEVQVSPAGPILENQVTVLV
 CNTPNAPSRLRYSWYKNHVLLLEDAHSHTLRHLATRADTGFYFCEVQNVHGSERSGPPSVVNVNHPPLT
 PVLTAFLLETQAGLVGILHCSVSEPLATLVL SHGGHILASTSGDSHSPRFSGTSGPNLRLIIRDLEE
 TDSGEYKCSATNSLGNATSTLDFHANAARLLISPAAEVVEGQAVTLSCRSLSPTPDARFSWYLNALL
 HEGPGSSLLLPAASSTDAGSYHCRARDGHSASGPPSPAVLTVL YPPRQPTFTTRLDLDAAGAGARRGL
 LLCRVDS DPPARLQLLHKDRVATSLPSGGGCSTCGGCSPRMKVTKAPNLLRVEIHNPLLEEEGLYLCE
 ASNALGNASTSATFNGQATVLA IAPSHTLQEGTEANLTCNVSREAAGSPANFSWFRNGVLWAQGPLETV
 TLLPVARTDAALYACRILTEAGQLSTPVLLSVL YPPDRPKLSALLDMGQGHMALFICTVDSRPLALLA
 LFHGEHLLATSLGPQVPSHGRFQAKAEANSLKLEVRELGLGDSGSYRCEATNVLGSNLSLFFQVRGAW
 VQVSPPELQEQAVVLSCQVPTGVPEGTSYRWYRDGQPLQESTSATLRF AAITLTQAGAYHCQAQAPG
 SATTSLAVPISLHVSYAPRHVTLTTLMDTGPGRLLGLL CRVDS D PPAQLRLLHGDRLVASTLQGVGPE
 GSSPRLHVAVAPNTRLRLEIHGAMLEDEGVYICEASNTLQASASADFDAQAVNVQWPGATVREGQLVN
 LTCLVWTTHPAQLTYTWYQDGGQRLDAHSIPLPNVTVRDATSYRCGVGPPGRAPRLSRPITLDVL YAPR
 NLRLTYLLESHGQLALVLC TVDSRPPAQLALSHAGRLASSTAASVPNTLRLELRGPQRDEGFYSCS
 ARSPLGQANTSLERLEGVVRVILAPEAAVPEGAPITVTCADPAAHAPTLTYWYHNGRWLQEGPAASLSF
 LVATRAHAGAYSCQAQDAQGTRSSRPAALQVL YAPQAVLSSFRDSRARSMAVIQCTVDSEPPAELALS
 HDGKVLATSSGVHSLASGTGHVQVARNALRLQVQDVPAGDDTYVCTAQNLLGSI STIGRLQVEGARVVA
 EPGLDVPEGAALNLSCRLLGGPGPVGNSTFAFWNDRRLHAEPVPTLAFTHVARAQAGMYHCLAELPTG
 AAASAPVMLRVL YPPKTPTMMVFVEPEGGLRGILDCRV DSEPLASLTLHLGSRLVASSQPQGAPAEPHI
 HVLASPNALRVDIEALRPSDQGEYIC SASNVLGSASTSTYFGVRALHRLHQFQQLLWVLLVGLLLLLL
 LGLGACYWRRRRVCKQSMGENSVEMAFQKETTQLIDPDAATCETSTCAPPLG
 LEQKLISEEDLAANDILDYKDDDDKV

Recombinant protein using RC224969 also available, [TP324969M](#)

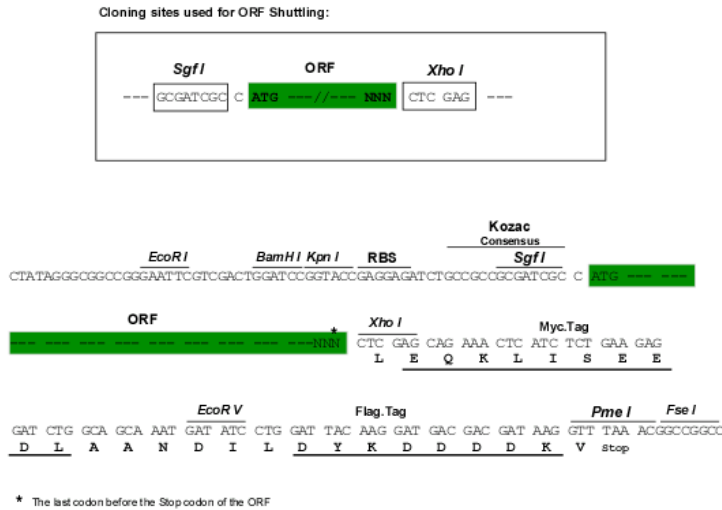
Chromatograms:

https://cdn.origene.com/chromatograms/mg3491_b10.zip

Restriction Sites:

Sgfl-XhoI

Cloning Scheme:



ACCN: NM_023068

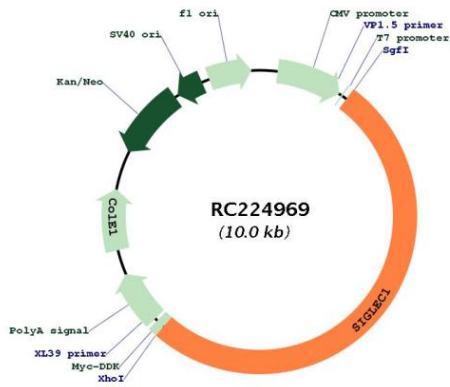
ORF Size: 5127 bp

OTI Disclaimer: Due to the inherent nature of this plasmid, standard methods to replicate additional amounts of DNA in E. coli are highly likely to result in mutations and/or rearrangements. Therefore, OriGene does not guarantee the capability to replicate this plasmid DNA. Additional amounts of DNA can be purchased from OriGene with batch-specific, full-sequence verification at a reduced cost. Please contact our customer care team at custsupport@origene.com or by calling 301.340.3188 option 3 for pricing and delivery.

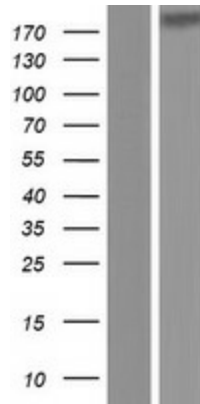
The molecular sequence of this clone aligns with the gene accession number as a point of reference only. However, individual transcript sequences of the same gene can differ through naturally occurring variations (e.g. polymorphisms), each with its own valid existence. This clone is substantially in agreement with the reference, but a complete review of all prevailing variants is recommended prior to use. [More info](#)

OTI Annotation:	This clone was engineered to express the complete ORF with an expression tag. Expression varies depending on the nature of the gene.
Components:	The ORF clone is ion-exchange column purified and shipped in a 2D barcoded Matrix tube containing 10ug of transfection-ready, dried plasmid DNA (reconstitute with 100 ul of water).
Reconstitution Method:	<ol style="list-style-type: none">1. Centrifuge at 5,000xg for 5min.2. Carefully open the tube and add 100ul of sterile water to dissolve the DNA.3. Close the tube and incubate for 10 minutes at room temperature.4. Briefly vortex the tube and then do a quick spin (less than 5000xg) to concentrate the liquid at the bottom.5. Store the suspended plasmid at -20°C. The DNA is stable for at least one year from date of shipping when stored at -20°C.
Note:	Plasmids are not sterile. For experiments where strict sterility is required, filtration with 0.22um filter is required.
RefSeq Size:	5130 bp
RefSeq ORF:	5130 bp
Locus ID:	6614
UniProt ID:	Q9BZZ2
Cytogenetics:	20p13
Protein Families:	Transmembrane
Protein Pathways:	Cell adhesion molecules (CAMs)
MW:	182.7 kDa
Gene Summary:	This gene encodes a member of the immunoglobulin superfamily. The encoded protein is a lectin-like adhesion molecule that binds glycoconjugate ligands on cell surfaces in a sialic acid-dependent manner. It is a type I transmembrane protein expressed only by a subpopulation of macrophages and is involved in mediating cell-cell interactions. Alternative splicing produces a transcript variant encoding an isoform that is soluble rather than membrane-bound; however, the full-length nature of this variant has not been determined. [provided by RefSeq, Jul 2008]

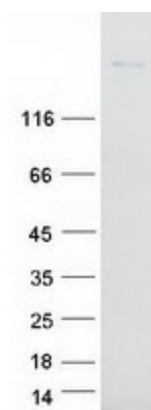
Product images:



Circular map for RC224969



Western blot validation of overexpression lysate (Cat# [LY411501]) using anti-DDK antibody (Cat# [TA50011-100]). Left: Cell lysates from untransfected HEK293T cells; Right: Cell lysates from HEK293T cells transfected with RC224969 using transfection reagent MegaTran 2.0 (Cat# [TT210002]).



Coomassie blue staining of purified SIGLEC1 protein (Cat# [TP324969]). The protein was produced from HEK293T cells transfected with SIGLEC1 cDNA clone (Cat# RC224969) using MegaTran 2.0 (Cat# [TT210002]).