

Product datasheet for **RC224965**

CEACAM16 (NM_001039213) Human Tagged ORF Clone

Product data:

Product Type:	Expression Plasmids
Product Name:	CEACAM16 (NM_001039213) Human Tagged ORF Clone
Tag:	Myc-DDK
Symbol:	CEACAM16
Synonyms:	CEAL2; DFNA4B; DFNB113
Mammalian Cell Selection:	Neomycin
Vector:	pCMV6-Entry (PS100001)
E. coli Selection:	Kanamycin (25 ug/mL)



[View online »](#)

ORF Nucleotide Sequence:

>RC224965 representing NM_001039213
 Red=Cloning site Blue=ORF Green=Tags(s)

TTTTGTAATACGACTCACTATAGGGCGGCCGGAATTCGTCGACTGGATCCGGTACCGAGGAGATCTGCC
 GCC**GCGATCGCC**

ATGAGTGATTACTGAGCATTTACTCTGCGCCAGTCGTGGTAAGTACTGTACTTACATGTTACAATAA
 GAAACTGAGGCTTGGCAGAGTCCATAAATTGCCAGGGTCTGGAGGTAGGAAACAGTGGAACTATGTC
 CAGAGCCTATACTTTTTTTTTTTTGGAGATGGAGTTTCATGGCGCTGACTGGGTACAGCTGGCTGCTCCTC
 AGTGCCACATTCTGAATGTGGGGCCGAGATCTCTATCACCTGGAGCCTGCCAGCCGAGCGAAGGGG
 ACAACGTCACGCTGGTCGTCCATGGGCTTTCGGGGAACTGCTCGCCTACAGCTGGTATGCGGGGCCAC
 ACTCAGCGTGTACATCTGGTGGCCAGCTACATCGTGAGCACAGGCGATGAGACTCTGGCCCGGCCAC
 ACGGGCGGGAGGCTGTGCGCCCGATGGCAGCCTGGACATCCAGGGCATCTGCCCGGCACTCAGGCA
 CCTACATCTGCAGACCTCAACAGGCAGTTGCAGACCGAGGTGGGCTACGGACAGTGCAGTCCATGA
 GATCCTGGCCAGCCACAGTCTTGCCAAACAGCACAGCCTGGTGAACGTCGAGACACCTGCGCCTT
 ATGTGCAGCAGCCACGCCACCGCCAGGTCCGCTGTTCTTCAACGGTGGGGCCTGCCCGTCGCTC
 TCCGCTGGGCTGTCCCTGACGGCCGGGTGCTGGCCAGGCATGGCATCCGCCGGGAGGAGCCGGCGC
 CTATCAGTGTGAGGTGTGGAACCCGGTCACTGTGACCCGAGCGAGCCATCAACCTGACCGTGTACTTT
 GGCCAGAGCGTGTGGCCATCTCCAGGATCCACCACCCGCACAGGCTGCACCAATAAGTTGACTTCA
 ACACGTCCTCACCTGTGGTGGTGTCCAGGTCTGCCAGAGCCCGAGTATGTGTGGACCTTCAACGG
 GCAGGCCCTAAGAACGGCAAGACCACCTCAACATCAGCAGCATGACAGCCGCCAGGAGGGGACGTAC
 ACATGTATTGCGAAGAACCAAGACCCTGCTATCTGGATCTGCCTCAGTCGTGGTCAAGCTCTCTGCTG
 CAGCAGTTGCCACGATGATCGTGCCCGTCCCAAGCAACGGAGGGCCAGGACGTAACACTGACCGT
 GCAGGGCTACCCCAAGGACCTGCTGGTCTACGCTGTTACCGCGGGCCTGCCTCCGAGCCCAACCGGCTG
 CTAGCCAGTGCCTGAGGAACCTGGATTGCAGGCCCGCGCACACAGGCCGGGAGGTGGGCTTCCCA
 ACTGCTCGCTGTTGGTGCAGAAGCTGAACCTCACAGACTGGCCGCTACACACTCAAGACCGTCACAGT
 GCAGGGCAAGACTGAGACTGGAAGTGGAGTGCAGGTGGCCCCCTGGGG

ACGCGTACGCGGCCGCTCGAGCAGAACTCATCTCAGAAGAGGATCTGGCAGCAATGATATCCTGGATT
 ACAAGGATGACGACGATAAGGTTTAA

Protein Sequence:

>RC224965 representing NM_001039213
 Red=Cloning site Green=Tags(s)

MSDLLSIYSAPVVVSTVLHMLQIRKLRLGRVHKLPRVLEVGNSTMSRAYTFFFLRWSFMALTGYSWLLL
 SATFLNVGAEISITLEPAQPSEGDNVTLVVHGLSGELLAYSWYAGPTLSVSYLVASYIVSTGDETPGPAH
 TGREAVRPDGSLDIQGILPRHSGTYILQTFNRQLQTEVGYGHVQVHEILAQPTVLANSTALVERRDTLRL
 MCSSPSPTAEVRWFFNGGALPVALRLGLSPDGRVLRHGIRREEAGAYQCEVWNPVSVSRSEPINLTVYF
 GPERVAILQDSTTRTGCTIKVDFNTSLTLWCVSRSCPEPEYVWTFNGQALKNGQDHLNLISSMTAAQEGTY
 TCIAKNTKLLSGSASVVVKLAAAATMIVPVPTKPTGQDVTLLTVQGYPKDLLVYAWYRGPASEPNRL
 LSQLPSGTWIAGPAHTGREVGFNPNSLLVQKLNLTDTGRYTLKTVTVQGTETLEVELQVAPLG

TRTRPLEQKLISEEDLAANDILDYKDDDDKV

Chromatograms:

https://cdn.origene.com/chromatograms/mk8005_a02.zip

Restriction Sites:

Sgfl-Mlul

Cloning Scheme:

Cloning sites used for ORF Shutting:



* The last codon before the Stop codon of the ORF

ACCN: NM_001039213

ORF Size: 1452 bp

OTI Disclaimer: The molecular sequence of this clone aligns with the gene accession number as a point of reference only. However, individual transcript sequences of the same gene can differ through naturally occurring variations (e.g. polymorphisms), each with its own valid existence. This clone is substantially in agreement with the reference, but a complete review of all prevailing variants is recommended prior to use. [More info](#)

OTI Annotation: This clone was engineered to express the complete ORF with an expression tag. Expression varies depending on the nature of the gene.

Components: The ORF clone is ion-exchange column purified and shipped in a 2D barcoded Matrix tube containing 10ug of transfection-ready, dried plasmid DNA (reconstitute with 100 ul of water).

Reconstitution Method:

1. Centrifuge at 5,000xg for 5min.
2. Carefully open the tube and add 100ul of sterile water to dissolve the DNA.
3. Close the tube and incubate for 10 minutes at room temperature.
4. Briefly vortex the tube and then do a quick spin (less than 5000xg) to concentrate the liquid at the bottom.
5. Store the suspended plasmid at -20°C. The DNA is stable for at least one year from date of shipping when stored at -20°C.

RefSeq: [NM_001039213.1](#), [NP_001034302.1](#)
RefSeq Size: 1797 bp

RefSeq ORF: 1278 bp

Locus ID: 388551

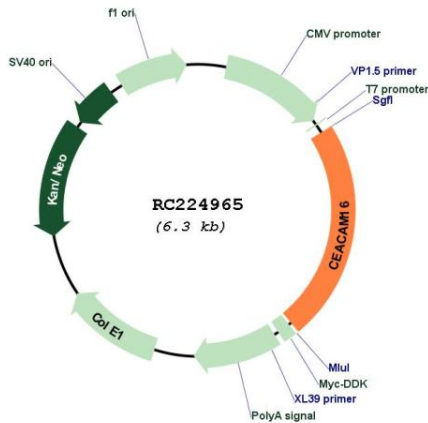
UniProt ID: [Q2WEN9](#)
Cytogenetics: 19q13.31-q13.32

Protein Families: Transmembrane

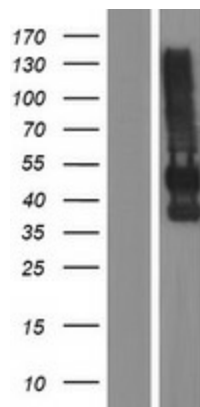
MW: 52.68 kDa

Gene Summary: The protein encoded by this gene is a secreted glycoprotein that in mouse interacts with tectorial membrane proteins in the inner ear. The encoded adhesion protein is found in cochlear outer hair cells and appears to be important for proper hearing over an extended frequency range. Defects in this gene likely are a cause of non-syndromic autosomal dominant hearing loss. [provided by RefSeq, May 2012]

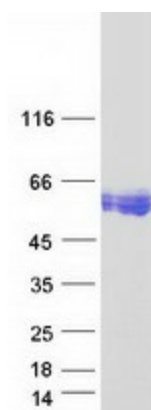
Product images:



Circular map for RC224965



Western blot validation of overexpression lysate (Cat# [LY422030]) using anti-DDK antibody (Cat# [TA50011-100]). Left: Cell lysates from untransfected HEK293T cells; Right: Cell lysates from HEK293T cells transfected with RC224965 using transfection reagent MegaTran 2.0 (Cat# [TT210002]).



Coomassie blue staining of purified CEACAM16 protein (Cat# [TP324965]). The protein was produced from HEK293T cells transfected with CEACAM16 cDNA clone (Cat# RC224965) using MegaTran 2.0 (Cat# [TT210002]).