

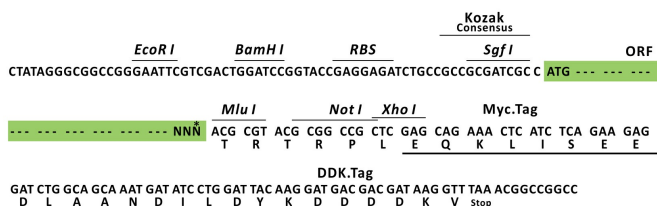
Product datasheet for RC224961L1

ANKRD17 (NM_032217) Human Tagged Lenti ORF Clone

Product data:

Product Type:	Expression Plasmids
Product Name:	ANKRD17 (NM_032217) Human Tagged Lenti ORF Clone
Tag:	Myc-DDK
Symbol:	ANKRD17
Synonyms:	GTAR; MASK2; NY-BR-16
Mammalian Cell Selection:	None
Vector:	pLenti-C-Myc-DDK (PS100064)
E. coli Selection:	Chloramphenicol (34 ug/mL)
ORF Nucleotide Sequence:	The ORF insert of this clone is exactly the same as(RC224961).
Restriction Sites:	SgfI-MluI
Cloning Scheme:	

Cloning sites used for ORF Shuttling:



* The last codon before the Stop codon of the ORF.

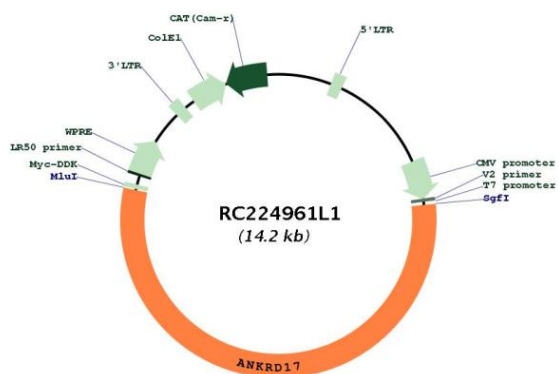
ACCN:	NM_032217
ORF Size:	7809 bp



[View online »](#)

OTI Disclaimer:	The molecular sequence of this clone aligns with the gene accession number as a point of reference only. However, individual transcript sequences of the same gene can differ through naturally occurring variations (e.g. polymorphisms), each with its own valid existence. This clone is substantially in agreement with the reference, but a complete review of all prevailing variants is recommended prior to use. More info
OTI Annotation:	This clone was engineered to express the complete ORF with an expression tag. Expression varies depending on the nature of the gene.
Components:	The ORF clone is ion-exchange column purified and shipped in a 2D barcoded Matrix tube containing 10ug of transfection-ready, dried plasmid DNA (reconstitute with 100 ul of water).
Reconstitution Method:	<ol style="list-style-type: none"> 1. Centrifuge at 5,000xg for 5min. 2. Carefully open the tube and add 100ul of sterile water to dissolve the DNA. 3. Close the tube and incubate for 10 minutes at room temperature. 4. Briefly vortex the tube and then do a quick spin (less than 5000xg) to concentrate the liquid at the bottom. 5. Store the suspended plasmid at -20°C. The DNA is stable for at least one year from date of shipping when stored at -20°C.
RefSeq:	NM_032217.3
RefSeq Size:	9390 bp
RefSeq ORF:	7812 bp
Locus ID:	26057
UniProt ID:	O75179
Cytogenetics:	4q13.3
Domains:	ANK, KH
MW:	274.1 kDa
Gene Summary:	The protein encoded by this gene belongs to the family of ankyrin repeat-containing proteins, and contains two distinct arrays of ankyrin repeats in its amino-terminal region, one with 15 ankyrin repeats, and the other with 10 ankyrin repeats. It also contains a nuclear export signal, nuclear localization signal, and a cyclin-binding RXL motif. Localization of this protein to the nucleus has been shown experimentally, and interactions between this protein and cyclin-dependent kinase 2 have been observed. It has been suggested that this protein plays a role in both DNA replication and in both anti-viral and anti-bacterial innate immune pathways. Alternative splicing results in multiple transcript variants encoding different isoforms. [provided by RefSeq, Dec 2015]

Product images:



Circular map for RC224961L1