

Product datasheet for RC224956L1

Insulin Receptor R (INSRR) (NM_014215) Human Tagged Lenti ORF Clone

Product data:

Product Type:	Expression Plasmids
Product Name:	Insulin Receptor R (INSRR) (NM_014215) Human Tagged Lenti ORF Clone
Tag:	Myc-DDK
Symbol:	Insulin Receptor R
Synonyms:	IRR
Mammalian Cell Selection:	None
Vector:	pLenti-C-Myc-DDK (PS100064)
E. coli Selection:	Chloramphenicol (34 ug/mL)
ORF Nucleotide Sequence:	The ORF insert of this clone is exactly the same as(RC224956).
Restriction Sites:	SgfI-MluI
Cloning Scheme:	

Cloning sites used for ORF Shuttling:



* The last codon before the Stop codon of the ORF.

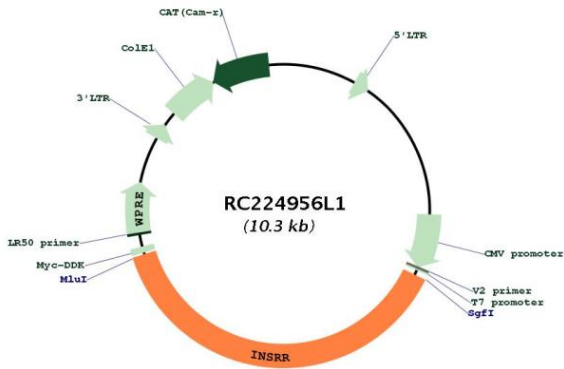
ACCN:	NM_014215
ORF Size:	3891 bp



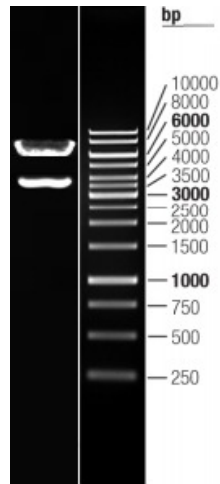
[View online »](#)

OTI Disclaimer:	The molecular sequence of this clone aligns with the gene accession number as a point of reference only. However, individual transcript sequences of the same gene can differ through naturally occurring variations (e.g. polymorphisms), each with its own valid existence. This clone is substantially in agreement with the reference, but a complete review of all prevailing variants is recommended prior to use. More info
OTI Annotation:	This clone was engineered to express the complete ORF with an expression tag. Expression varies depending on the nature of the gene.
Components:	The ORF clone is ion-exchange column purified and shipped in a 2D barcoded Matrix tube containing 10ug of transfection-ready, dried plasmid DNA (reconstitute with 100 ul of water).
Reconstitution Method:	<ol style="list-style-type: none"> 1. Centrifuge at 5,000xg for 5min. 2. Carefully open the tube and add 100ul of sterile water to dissolve the DNA. 3. Close the tube and incubate for 10 minutes at room temperature. 4. Briefly vortex the tube and then do a quick spin (less than 5000xg) to concentrate the liquid at the bottom. 5. Store the suspended plasmid at -20°C. The DNA is stable for at least one year from date of shipping when stored at -20°C.
RefSeq:	NM_014215.1
RefSeq Size:	4148 bp
RefSeq ORF:	3894 bp
Locus ID:	3645
UniProt ID:	P14616
Cytogenetics:	1q23.1
Protein Families:	Druggable Genome, Protein Kinase, Transmembrane
Protein Pathways:	Prostate cancer, Regulation of actin cytoskeleton
MW:	143.72 kDa
Gene Summary:	Receptor with tyrosine-protein kinase activity. Functions as a pH sensing receptor which is activated by increased extracellular pH. Activates an intracellular signaling pathway that involves IRS1 and AKT1/PKB.[UniProtKB/Swiss-Prot Function]

Product images:



Circular map for RC224956L1



Double digestion of RC224956L1 using SgfI and MluI