

Product datasheet for RC224956

Insulin Receptor R (INSRR) (NM_014215) Human Tagged ORF Clone

Product data:

Product Type:	Expression Plasmids
Product Name:	Insulin Receptor R (INSRR) (NM_014215) Human Tagged ORF Clone
Tag:	Myc-DDK
Symbol:	Insulin Receptor R
Synonyms:	IRR
Mammalian Cell Selection:	Neomycin
Vector:	pCMV6-Entry (PS100001)
E. coli Selection:	Kanamycin (25 ug/mL)
ORF Nucleotide Sequence:	>RC224956 representing NM_014215 Red=Cloning site Blue=ORF Green=Tags(s)

TTTTGTAATACGACTCACTATAGGGCGGCCGGAATTCGTCGACTGGATCCGGTACCGAGGAGATCTGCC
GCC**CGATCGCC**

ATGGCAGTGCCTAGTCTGTGGCCCTGGGGAGCATGCCTGCCTGTGATCTTCCTCTCCTTGGGATTTGGCC
TGGATACAGTAGAGGTGTGCCCCAGCCTGGATATTCGCTCAGAGGTGGCAGAGCTTCGTACAGCTGGAGAA
CTGCAGCGTGGTGGAGGGCCACCTGCAGATCCTGCTCATGTTACAGCCACCGGGGAGGACTTCCGCGGC
CTCAGCTTCCCTCGCCTACCCAGGTACCGACTACCTGCTGCTTCCGTGTCTACGGACTGGAGAGCC
TGGCGGACCTCTCCCAACCTAGCAGTCATCCGCGGGACGCGCCTCTTCCTGGGCTATGCACTGGTCAT
CTTTGAGATGCCACATCTGCGTGACGTGGCACTGCCTGCCTTGGGGCCGTGCTGCGTGGGGCTGTGCGT
GTGGAGAAGAACCAGGAGCTCTGCCACCTCTCCACATTGACTGGGGACTGCTGCAGCCAGCACCTGGCG
CCAACCACATCGTGGGAACAAGCTGGGCGAGGAGTGTGCTGACGTGTGCCCTGGTGTGCTGGGTGCTGC
TGGTGAGCCCTGTGCAAGACCCTTCAGCGGGCACACTGACTACAGATGCTGGACCTCCAGCCACTGC
CAGAGAGTGTGCCCTGCCCATGGGATGGCTTGACAGCGAGGGGCGAGTGTGCCACACCGAATGCC
TGGGGGCTGCAGCCAGCCAGAAGACCCTCGTGCCTGTGTAGCTTGCCGCCACCTCTACTCCAGGGTGC
CTGCCTGTGGGCTGCCCGCCAGGCACCTACCAGTATGAGTCTGGCGCTGTGTACAGCTGAGCGCTGT
GCCAGCTGCACCTGTGCCCCGGCGCTCCACCTTCGCATACACCAGGGCAGTTGCCTGGCCAGT
GCCCTTCTGGCTTACCCGTAATAGCAGCAGCATATTCTGCCACAAGTGCAGGGGCTGTGCCCTAAAGA
GTGCAAGGTAGGCACCAAGACCATCGACTCCATCCAGGCGGCACAGGATCTTGTGGGCTGCACGCATGTG
GAGGGAAGCCTCATCCTCAACCTTCGCCAGGGCTACAACCTGGAGCCACAGCTGCAGCACAGCCTGGGGC
TGGTAGAAACCTACTGGCTTCTCAAATCAAGCACTCCTTTGCCCTCGTGTCCCTGGGCTTTTTCAA
GAACCTCAAATAATCCGGGGAGACGCCATGGTGGATGGAACTACACTCTCTACGTGCTGGACAACCG
AACCTACAACAGTAGGGTCTGGGTGGCCGGGGCTCACCATTCCCGTGGGAAGATCTACTTCGCT
TCAACCCGCGCTCTGCTTGAACACATCTACCGACTGGAGGAGGTGACAGGCACGCGAGGTGGCAGAA
CAAGGCTGAGATCAACCCCGCACCAACGGAGACCGCGCCGCTGCCAGACTCGCACCTGCGCTTCGTG



TCCAACGTGACGGAGGCAGACCGCATCCTGCTACGCTGGGAGCGCTATGAGCCACTGGAGGCCCGCGACC
 TGCTCAGCTTCATCGTGTACTACAAGGAGTCCCCATTCCAGAACGCCACAGAGCAGTGGGTCCAGATGC
 TTGTGGAACCCAGAGCTGGAACCTGCTGGATGTGGAGCTGCCCTAAGCCGCACCCAGGAGCCAGGGGTG
 ACCCTAGCCTCCCTCAAGCCTTGGACACAGTACGCAGTGTGGTGTGCGGGCCATCACGCTAACCCTGAGG
 AGGACAGCCCTCATCAAGGAGCCAGAGTCCCATCGTCTACCTCCGAACGCTGCCTGCAGCTCCCACGGT
 GCCCAAGACGTCATCTCCACGTCCAACCTCCTCCTCCACCTCCTGGTGCCTGGAAGCCACCCAGCCAG
 CGCAATGGGAACCTCACCTACTACTGGTGTGTGGCAGCGGCTGGCAGAGGACGGCGACCTCTACCTCA
 ATGACTACTGCCACCGCGCTTGGCGCTGCCACCCAGCAACAACGATCCGCGCTTCGACGGCGAAGACGG
 GGATCCTGAGGCCGAGATGGAGTCCGACTGCTGCCCTTGCAGCACCCACCTCCTGGTACAGTTCTGCC
 CCGCTGGAGGCGCAAGAGGCTCGTTCCAGAAGAAGTTTGAAGTTTCTACACAACCGCATCACCATCC
 CCATATCCCTTGGAAAGGTGACGTCCATCAACAAGAGCCCAAGGGACTCAGGGCGCACCCGCCGGG
 AGCTGGGCCCTCCGGCTGGGGGCAACAGCTCGGATTCGAGATCCAGGAGGACAAGGTGCCCGTGAG
 CGAGCGGTGCTGAGCGGCTGCGCCACTCACGGAATACCGGATCGACATCCATGCCTGCAACCACGCG
 CGCACACCGTGGCTGCAGCGCCGCCACCTTCGTCTTTGCGCGCACCATGCCACAGAGAGGCTGATGG
 TATTCCAGGAAAGGTGGCTGGGAGGCCCCAGCAAGAACAGTGTCTTTGCGCTGGCTCGAGCCACCA
 GACCCCAACGGACTCATCTCAAGTACGAAATCAAGTACCGCGCTTGGGAGAGGAGGCCACAGTGTGT
 GTGTGTCCCGTCTTCGATATGCGAAGTTTGGGGGAGTCCACCTGGCCCTGCTGCCCTGGAAGTACTC
 TGCCAGGGTTAGGGCAACCTCACTGGCTGGCAATGGCTCTTGGACAGACAGTGTTCCTTACATCCTT
 GGCCAGAGGAGGAGGATGCTGGGGGCTGCATGTCTCCTCACTGCCACCCCTGTGGGGCTCACGCTGC
 TCATCGTCTTGTGCTGCCCTTGGTTTCTTACGGCAAGAAGAGAAACAGAACCCCTGTATGCTTCTGTGA
 TCCAGAGTACTTCAGCGCCTCTGATATGTATGTCCCTGATGAATGGGAGTGCCTCGGGAGCAGATCTCG
 ATAATCCGGGAAGTGGCCAGGGCTCTTTGGGATGGTATATGAGGGCTGGCACGAGGACTTGAGGCTG
 GAGAGGAGTCCACACCCGTGGCCCTGAAGACGGTGAATGAGTGGCCAGCCACGGGAATGCATTGAGTT
 CCTCAAGGAAGCTTCTGTCATGAAAGCCTTCAAGTGTACCATGTGGTGGTCTCCTGGGTGGTATCT
 CAGGGCCAGCCTACTGGTCTCATGGAGTAAATGACCCGTGGGACCTCAAGAGCCATCTTCGATCTT
 TGCGGCTGAGGCAGAGAACAACCTGGGCTCCACAGCCAGCATTGGGGAAATGATCCAAATGGCTGG
 TGAGATTGCAGACGGCATGGCTACCTTGTGCCAACAAGTTTGTGCACCGAGATCTAGCAGCCGCAAC
 TGCATGGTGTCCAGGACTTCACCGTCAAGATCGGGGACTTCGGGATGACTCGGGACGTGTATGAGACAG
 ACTATTACCGCAAGGGTGGGAAGGGGCTGCTGCCCGTGCCTGGATGGCCCCGAGTCCCTCAAAGATGG
 GATCTTACCACCCACTCGGATGTCTGGTCTTTGGCGTGGTACTCTGGGAGATTGTACCCTGGCAGAA
 CAACCCTACCAGGCTGTCCAATGAGCAGGTGCTGAAGTTTCGTCATGGATGGCGGGTCTGGAGGAGC
 TGGAGGGCTGTCCCTTACAGTGCAGGAGCTGATGAGCCGCTGCTGGCAGCCGAACCCACGCTGCGCCC
 ATCTTTACACACATTCTGGACAGCATACAGGAGGAGCTGCGGCCCTCCTTCCGCCTCCTCTCCTTAC
 TACAGCCCGAATGCCGGGGGGCCGGGGCTCCCTGCCTACCACCGATGCAGAGCCTGACTCCTCACCCA
 CTCGAAGAGACTGCAGCCCTCAAATGGGGTCCAGGGCAC

ACGCGTACGCGGCCGCTCGAGCAGAACTCATCTCAGAAGAGGATCTGGCAGCAATGATATCCTGGATT
 ACAAGGATGACGACGATAAGGTTTAA

Protein Sequence: >RC224956 representing NM_014215
Red=Cloning site Green=Tags(s)

```

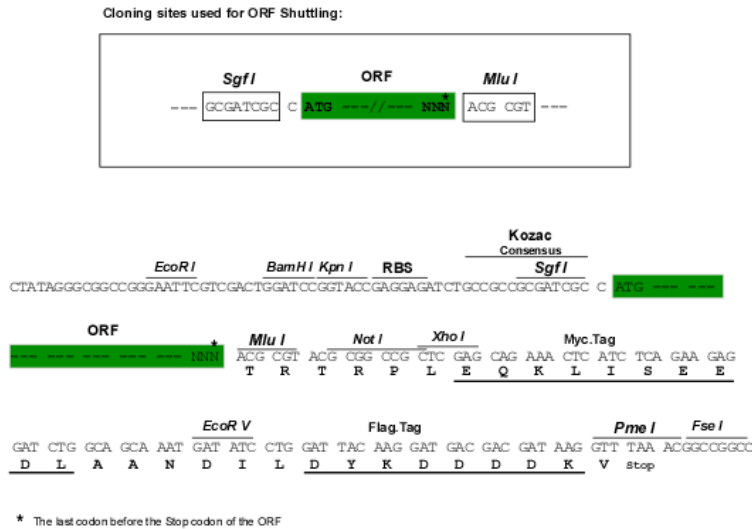
MAVPSLWPWGACLPVIFLSLGFGLDVEVCPSLDIRSEVAELRQLENCVVVEGHLQILLMFTATGEDFRG
LSFPRLTQVTDYLLFRVYGLLESLRDLFNLAVIRGTRFLGYALVIFEMPHLRDVALPALGAVLRGAVR
VEKNQELCHLSTIDWGLLQPAPGANHIVGNKLGEECADVCPGVLGAAGEPCAATTFSGHTDYRCWTSSHC
QRVPCPHGMACTARGECCHTECLGGCSQPEDPRACVACRHLVYFQGAQLWACPPGTYYQYESWRVCVAERC
ASLHSPVGRASTFGIHQGSCLAQCPSGFTRNSSSIFCHKCEGLCPKECKVGTKTIDSIQAAQDLVGCTHV
EGSLILNLRQGYNLEPQLQHSLGLVETITGFLKIKHSFALVSLGFFKNLKLIRGDAMVDGNYTYLVLDNQ
NLQQLGSWVAAGLTIPVGKIYFAFNPRCLLEHIYRLEEVGTGRGRQNKAEINPRTNGDRAACQTRTLRFV
SNVTEADRILLRWERYEPEARLLSFIVYYKESPFQNA TEHVGPDACGTQSWNLLDVELPLSRTQEPGV
TLASLKPWTQYAVFVRAITLTTEEDSPHQGAQSPVYLRTPAAPTVPQDVI STSNSSSHLLVRWKPTQ
RNGNLTYLVLWQRLAEDGDLVNDYCHRGLRPTSNNDRPFDGEDGDPEAEMESDCCPCQHPGGQVLP
PLEAQEASFQKKFENFLHNAITIPISPKVTSINKSPQRDSGRHRAAGPLRLGGNSSDFEIQEDKVPRE
RAVLSGLRHFTEYRIDIHACNHAHTVGC SAATVFVARTMPHREADGIPGKVAWEASSKNSVLLRWLEPP
DPNGLILKYEIKYRRLGEEATVLCVSRRLRYAKFGVHLALLPPGNYSARVRATSLAGNGSWTDSVAFYIL
GPEEEDAGGLHVLLTATPVGLTLLIVLAALGFFYGKRNRTLYASVNPEYF SASDMYVPDEWEVPREQIS
IIRELQGGSFGMYVEGLARGLEAGEESTPVALKTVNELASPRECIEFLKEASVMKAFKCHHVRLLGVS
QGQPTLVIMELMTRGDLKSHLRLRPEAENNPGLPQPALGEMIQMAGEIADGMAYLAANKFVHRDLAARN
CMVSQDFTVKIGDFGMTRDVYETDYRKGKGLLPVRWMAPESLKDGIFTTSDVWSFGVVLWEIVTLAE
QPYQGLSNEQVLKFMVMDGGVLEELGCPQLQELMSRCWQPNRLRPSFTHILDSIQEELRPSFRLLSFY
YSPECRGARGSLPTTDAEPDSSPTPRDCSPQNGGPGH
    
```

TRTRPLEQKLISEEDLAANDILDYKDDDDKV

Chromatograms: https://cdn.origene.com/chromatograms/mk8008_h05.zip

Restriction Sites: SgfI-MluI

Cloning Scheme:

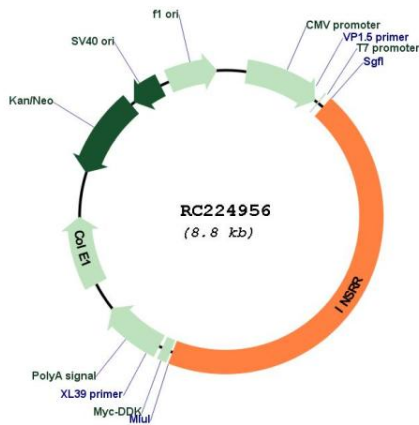


ACCN: NM_014215

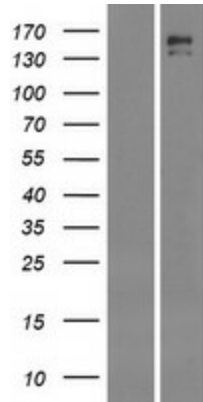
ORF Size: 3891 bp

OTI Disclaimer:	The molecular sequence of this clone aligns with the gene accession number as a point of reference only. However, individual transcript sequences of the same gene can differ through naturally occurring variations (e.g. polymorphisms), each with its own valid existence. This clone is substantially in agreement with the reference, but a complete review of all prevailing variants is recommended prior to use. More info
OTI Annotation:	This clone was engineered to express the complete ORF with an expression tag. Expression varies depending on the nature of the gene.
Components:	The ORF clone is ion-exchange column purified and shipped in a 2D barcoded Matrix tube containing 10ug of transfection-ready, dried plasmid DNA (reconstitute with 100 ul of water).
Reconstitution Method:	<ol style="list-style-type: none">1. Centrifuge at 5,000xg for 5min.2. Carefully open the tube and add 100ul of sterile water to dissolve the DNA.3. Close the tube and incubate for 10 minutes at room temperature.4. Briefly vortex the tube and then do a quick spin (less than 5000xg) to concentrate the liquid at the bottom.5. Store the suspended plasmid at -20°C. The DNA is stable for at least one year from date of shipping when stored at -20°C.
RefSeq:	NM_014215.3
RefSeq Size:	4148 bp
RefSeq ORF:	3894 bp
Locus ID:	3645
UniProt ID:	P14616
Cytogenetics:	1q23.1
Protein Families:	Druggable Genome, Protein Kinase, Transmembrane
Protein Pathways:	Prostate cancer, Regulation of actin cytoskeleton
MW:	143.72 kDa
Gene Summary:	Receptor with tyrosine-protein kinase activity. Functions as a pH sensing receptor which is activated by increased extracellular pH. Activates an intracellular signaling pathway that involves IRS1 and AKT1/PKB.[UniProtKB/Swiss-Prot Function]

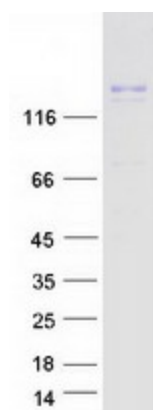
Product images:



Circular map for RC224956



Western blot validation of overexpression lysate (Cat# [LY415430]) using anti-DDK antibody (Cat# [TA50011-100]). Left: Cell lysates from untransfected HEK293T cells; Right: Cell lysates from HEK293T cells transfected with RC224956 using transfection reagent MegaTran 2.0 (Cat# [TT210002]).



Coomassie blue staining of purified INSRR protein (Cat# [TP324956]). The protein was produced from HEK293T cells transfected with INSRR cDNA clone (Cat# RC224956) using MegaTran 2.0 (Cat# [TT210002]).