

## Product datasheet for RC224955

### KIF1B (NM\_183416) Human Tagged ORF Clone

#### Product data:

Product Type:	Expression Plasmids
Product Name:	KIF1B (NM_183416) Human Tagged ORF Clone
Tag:	Myc-DDK
Symbol:	KIF1B
Synonyms:	CMT2; CMT2A; CMT2A1; HMSNII; KLP; NBLST1
Mammalian Cell Selection:	Neomycin
Vector:	pCMV6-Entry (PS100001)
E. coli Selection:	Kanamycin (25 ug/mL)
ORF Nucleotide Sequence:	>RC224955 ORF sequence Red=Cloning site Blue=ORF Green=Tags(s)

TTTTGTAATACGACTCACTATAGGGCGGCCGGAATTCGTCGACTGGATCCGGTACCGAGGAGATCTGCC  
GCC**CGATCGCC**

ATGTCGGGAGCCTCAGTGAAGGTGGCTGTCCGGTAAGGCCCTTCAATTCTCGAGAGACCAGCAAGGAAT  
CCAAATGCATCATTAGATGCAAGGCAACTCGACCAGTATTATTAACCCAAAGAATCCAAAGGAAGCTCC  
AAAGTCTTCAGCTTCGACTATTCTACTGGTCTCATACCTACCCGAAGATCCCTGTTTTGCATCTCAA  
AACCGTGTGTACAATGACATTGGCAAGGAAATGCTTTACACGCCTTTGAGGGATATAATGTCTGTATTT  
TTGCCTATGGGCAGACTGGTGTGGAAAATCTTATACAATGATGGGTAACAAGAAGAAAGCCAGGCTGG  
CATCATTCCACAGTTATGTGAAGAACTTTTTGAGAAAATCAATGACAACCTGTAATGAAGAAATGTCTTAC  
TCTGTAGAGGTGAGCTACATGGAATTTACTGTGAAAGAGTACGAGATTTGCTGAATCCAAAAACAAGG  
GTAATTTGCGTGTGCGTGAACACCCACTTCTTGGACCCTATGTGGAGGATCTGTCCAAGTTGGCAGTTAC  
TTCTACACAGACATTGCTGACCTCATGGATGCTGGGAACAAAGCCAGGACAGTGGCAGCTACAAACATG  
AATGAAACAAGTAGCCGTTCCACGCTGTGTTTACGATTGTTTTACCCAGAAGAAACACGATAATGAGA  
CCAACCTTTCCACTGAGAAGGTGAGTAAAATCAGCTTGGTGGATCTAGCAGGAAGTGAACGAGCTGATTC  
AACTGGTGCCAAAGGGACTCGATTAAGGAAGGAGCAAATATTAATAAGTCTCTTACAACCTTTGGGCAA  
GTCATTTACGCTTGGCCGAGGTGAGTAAAAGAAGAAGAAACAGATTTTATCCCTACAGGGATTCTG  
TACTTACTTGGCTCCTTCGAGAAAATTTAGGTGGCAATTTCTCGACTGCAATGGTTGCTGCTGAGCCC  
CGCGGATATCAACTACGATGAGACTTTGAGCACTCTGAGATATGCAGATCGTGCAAAAACAATTAATATGC  
AATGCTGTTATCAATGAGGACCCCAATGCCAACTGGTTCGTGAATTAAGGAGGAGGTGACACGGCTGA  
AGGACCTTCTCGTGCTCAGGGCCTGGGAGATATTATTGATACATCCATGGGGTCCCTCACTTCATCCCC  
ATCTTCTGCTCACTCAGTAGTCAGGTGGGCTTGACGCTGTGACCAGTATTCAAGAGAGGATCATGTCT  
ACACCTGGAGGAGGAAGCTATTGAACGTTTAAAGGAATCAGAGAAGATCATTGCTGAGTTGAATGAAA  
CTTGGGAAGAGAAGCTTCGTAACAGAGGCCATCAGAATGGAGAGAGAGCTTTGTTGGCTGAGATGGG  
AGTTGCCATTCGGAAGATGGAGAACCTAGGGTTTTCTCACCTAAAAAGACCCACATCTTGTAAAC



[View online >](#)

CTCAATGAAGACCCACTAATGTCTGAGTGCCTACTTTATTACATCAAAGATGGAATTACAAGGGTTGGCC  
AAGCAGATGCTGAGCGGCCAGGACATAGTGTGAGCGGGGCTCACATTAAGAAGAGCATTGTATCTT  
CCGGAGTGAGAGAAGCAACAGCGGGGAAGTTATCGTGACCTTAGAGCCCTGTGAGCGCTCAGAAACCTAC  
GTAATGGCAAGAGGGTGTCCCAGCCTGTTAGCTGCGCTCAGGAAACCGTATCATCATGGGTAACCA  
ATGTTTTCCGCTTTAACCACCCGGAACAAGCAGAGCTGAGCGAGAGAAGACTCCTTCTGCTGAGACCCC  
CTCTGAGCCTGTGGACTGGACATTTGCCAGAGGGAGCTTCTGGAAAAACAAGGAATTGATATGAAACAA  
GAGATGGAGAAAAGGCTACAGGAAATGGAGATCTTATACAAAAAGGAGAAGGAAGAGCAGATCTTCTTT  
TGGAGCAGCAGAGACTGGACGCGGATTCTGATAGCGGGGACGATTCTGACAAGAGGTCGTGTGAAGAGAG  
CTGAAAACGATTACTTCTCTGAGAGAAAAGCTACCTCCCAGCAAGTTGCAAACCATTTAAAAATGT  
GGCCTCCCAAGCAGTGGGAAGAAACGTGAACCAATTAATATGTATCAGATACCCCAAAGAAGCGCTTGA  
GTAAAGATTCCAAGTGGGTCACAATCTCAGATCTTAAATTCAGGCTGTCAAAGAGATTTGCTATGAGGT  
TGCTCTCAATGACTTCAGGCACAGTCGGCAGGAGATTGAAGCCCTGGCCATTGTCAAGATGAAGGAGCTT  
TGTGCCATGTATGGCAAGAAAGACCCCAATGAGCGGGACTCCTGGAGGGCAGTGGCCAGGGACGTCTGGG  
ATACCGTCGGTGTGGGGATGAGAAGATCGAAGACGTCATGGCCACTGGGAAAGGCAGCACTGATGTAGA  
TGACCTCAAGGTTTCATATAGACAAGCTGGAAGATATTTTGAAGAAGTCAAAAAGCAAAAATACATGAAA  
GACGAGGAGATAAAAAGTCTTAAGAAATAAAATGCTCAAAAATGGAAAAAGTCTTGCCACTGATCGGATCTC  
AGGAACAGAAAAGCCAGGAAGCCACAAAGCAAAGGAGCCTGTTGGTGTGGTGTAGTAGCACCTCTGA  
GAATAATGTAAGTAAAGGAGACAATGGAGAACTTGCAAAAAGAAGAACGTGTTTCCAGCTGATGAATGGG  
GATCCAGCTTTTAGACGTGGACGCTCTGCGCTGGATGAGGCAAGAGCAAATTCGGTTTAAGAACTTGAAC  
AGCAGGAGATAACAAAGCAGCTTCGTGGCAGAAATGTACCTCATAGGTTTCATCCCTCCTGAGAACCGGAA  
GCCCCGCTTCCCCTTTAAGAGCAACCCTAACACAGAACTCTTGGAGTCCTGGGACACATATCATATA  
ACAGAAGATGAGGTTATAGAGCTTAGGATTCAAAAGACGATGAAGCAAGGAAAGGAATAAAGAAGAGA  
GCCAAGAAAAAGGGGTAAAGGAGCTTTAAGGATCCCCAGTTTCCATGGGGCTCTCAAGGAATGAGAAG  
TCAAGATCACATCCAAGTTAGCAAGCAGCACATTAATAATCAGCAACAGCCACCTCAACTACGTTGGAGA  
AGCAATTCTCTCAATAATGGCCAGCCGAAAAGTACGCGCTGCCAGGCATCTGCCTCCGCGGAGTCATTAA  
ACTCCACAGTGGTCACCCCACTGCTGATGTACAGACTTTCAGGCAAAGCGCCATATTCATCAACACCG  
TCAGTCTTACTGTAATTAACTGAGGTCAGTTAGAGGGCAATGCAGCCACTTCTATCAGAAGCAG  
ACTGACAAACCCAGCCACTGTAGCCAGTTTGTGACACCTCCGCGGATGAGGAGACAGTTCTCAGCACCCA  
ATCTCAAAGCTGGTCGAGAAACCACAGTA

ACGCGTACGCGGCCGCTCGAGCAGAACTCATCTCAGAAGAGGATCTGGCAGCAAATGATATCCTGGATT  
ACAAGGATGACGACGATAAGGTTTAA

Protein Sequence: >RC224955 protein sequence  
 Red=Cloning site Green=Tags(s)

MSGASVKVAVRVRPFNSRETSKESKCI IQMQGNSTSIINPKNPKEAPKSF SFDYSYWSHTSPEDPCFASQ  
 NRVYNDIGKEMLLHAFEGYNVCIFAYGQTGAGKSYTMMGKQEE SQAGIIPQLCEELFEKINDNCNEEMSY  
 SVEVSymeIYCERVRDLLNPKNKGNLRVREHPLLG PYVEDLSKLAVTSYTDIADLMDAGNKARTVAATNM  
 NETSSRSHAVFTIVFTQKKHDNETNLSTEKVKISLVDLAGSERADSTGAKGTRLKEGANINKSL TTLGK  
 VISALAEVSKKKKKTDFIPYRDSVLTWLLREN LGNSRTAMVAALSPADINYDETLSTLRYADRAKQIKC  
 NAVINEDPNAKLVRELKEEVTRLKDLLRAQGLGDIIDTSMGSLTSSPSSCSLSSQVGLTSVTSIQERIMS  
 TPGGEEAIERLKESEKIIAELNETWEEKLRKTEAIRMEREALLAEMGVAIREDGGTLGVFSPKKTPHLVN  
 LNE DPLMSECLLYIKDGITRVGQADAERRQDIVL SGAHIKEEHCFRSERSNSGEVIVTLEPCERSETY  
 VNGKRVSQPVQLRSGNRIIMGKNHVFRFNHPEQARAEREKTPSAETPSEPVDWTF AQRELLEKQGIDMKQ  
 EMEKRLQEMEILYKKEKEEADLLEQQLDADSDSGDDSDKRSCEESWKLITSLREKLPPSKLQTI VKKC  
 GLPSSGKKREPIKMYQIPQRRRLSKDSKWVTISDLKIQAVKEICYEVALNDFRHSRQEIEALAI VMMKEL  
 CAMYGGKDPNERDSWRAVARDVWDTVGVGDEKIEDVMATGKGSTDVDDLKVHIDKLEDILQE VVKQNNMK  
 DEEIKVLRNKMLKMEKVLPLIGSQEQKSPGSHKAKEPVGAGVSSTSENNVSKGDNGELAKEERVSQ LMNG  
 DPAFRRGRRLRWMRQE QIRFKNLQQQEITKQLRRQNVPHRFIPPENRKRPRFPFKSNPKHRNSWSPGTHII  
 TEDEVIELRIPKDDEARKGNKEESQEKGGKAFKDPQFPWGSQGMRSQDHIQVSKQHINNQQPPQLRWR  
 SNSLNNGQPKSTRCQASASAESLNSHSGHPTADVQTFQAKRHIHQHRQSYCNYNTGGQLEGNAA TSYQKQ  
 TDKPSHCSQFVTPPMRMRQFSAPNLKAGRETTV

TRTRPLEQKLISEEDLAANDILDYKDDDDKV

Chromatograms: [https://cdn.origene.com/chromatograms/mk6561\\_c05.zip](https://cdn.origene.com/chromatograms/mk6561_c05.zip)

Restriction Sites: SgfI-MluI

Cloning Scheme:

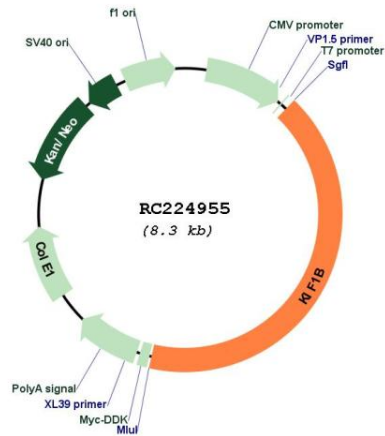


ACCN: NM\_183416

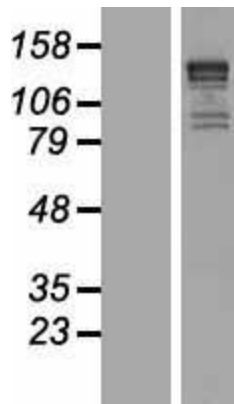
ORF Size: 3459 bp

<b>OTI Disclaimer:</b>	The molecular sequence of this clone aligns with the gene accession number as a point of reference only. However, individual transcript sequences of the same gene can differ through naturally occurring variations (e.g. polymorphisms), each with its own valid existence. This clone is substantially in agreement with the reference, but a complete review of all prevailing variants is recommended prior to use. <a href="#">More info</a>
<b>OTI Annotation:</b>	This clone was engineered to express the complete ORF with an expression tag. Expression varies depending on the nature of the gene.
<b>Components:</b>	The ORF clone is ion-exchange column purified and shipped in a 2D barcoded Matrix tube containing 10ug of transfection-ready, dried plasmid DNA (reconstitute with 100 ul of water).
<b>Reconstitution Method:</b>	<ol style="list-style-type: none"><li>1. Centrifuge at 5,000xg for 5min.</li><li>2. Carefully open the tube and add 100ul of sterile water to dissolve the DNA.</li><li>3. Close the tube and incubate for 10 minutes at room temperature.</li><li>4. Briefly vortex the tube and then do a quick spin (less than 5000xg) to concentrate the liquid at the bottom.</li><li>5. Store the suspended plasmid at -20°C. The DNA is stable for at least one year from date of shipping when stored at -20°C.</li></ol>
<b>RefSeq:</b>	<a href="#">NM_183416.4</a>
<b>RefSeq Size:</b>	7680 bp
<b>RefSeq ORF:</b>	3462 bp
<b>Locus ID:</b>	23095
<b>UniProt ID:</b>	<a href="#">O60333</a>
<b>Cytogenetics:</b>	1p36.22
<b>Protein Families:</b>	Druggable Genome
<b>MW:</b>	130.4 kDa
<b>Gene Summary:</b>	This gene encodes a motor protein that transports mitochondria and synaptic vesicle precursors. Mutations in this gene cause Charcot-Marie-Tooth disease, type 2A1. [provided by RefSeq, Jul 2008]

Product images:



Circular map for RC224955



Western blot validation of overexpression lysate (Cat# [LY405200]) using anti-DDK antibody (Cat# [TA50011-100]). Left: Cell lysates from untransfected HEK293T cells; Right: Cell lysates from HEK293T cells transfected with RC224955 using transfection reagent MegaTran 2.0 (Cat# [TT210002]).