

Product datasheet for **RC224952**

CDC2L5 (CDK13) (NM_031267) Human Tagged ORF Clone

Product data:

Product Type:	Expression Plasmids
Product Name:	CDC2L5 (CDK13) (NM_031267) Human Tagged ORF Clone
Tag:	Myc-DDK
Symbol:	CDC2L5
Synonyms:	CDC2L; CDC2L5; CHDFIDD; CHED; hCDK13
Mammalian Cell Selection:	Neomycin
Vector:	pCMV6-Entry (PS100001)
E. coli Selection:	Kanamycin (25 ug/mL)
ORF Nucleotide Sequence:	>RC224952 representing NM_031267 Red=Cloning site Blue=ORF Green=Tags(s)

TTTTGTAATACGACTCACTATAGGGCGGCCGGAATTCGTCGACTGGATCCGGTACCGAGGAGATCTGCC
GCC**CGATCGCC**

ATGCCGAGCAGCTCGGACACGGCGCTGGGGGGAGGCGGGGCCTGAGCTGGGCGGAGAAGAAGTTGGAGG
AACGCCGCAAGCGGAGGCGATTCTGTCCCTCGGCAGCCGCGCTGCTGTTGCCCTCTGCAGCCGCA
GCTCTGCAACCGCCGCCGCCCGCCCTCTGCTCTTCTGGTGTCTCCGGCACGGCCGCCCGCA
GCCGCCGCCGCCCGGCCTCTCTCTTGTCTTCCAGCCGGGCCCTCTGGGGTCAAGCGCTGGCGA
GAGGCAGGGGGCGCGCAGGAGGGCGGGAAGCGCGTCCGGGCCCGCCGGCAGGAGCGGAGAA
GGTTCGGGTCTTCTCGTGCCTCAGCCAGCGCAGGACGGCGGTGGCGGTGCTAGTAGCGGGGGGTGTG
ACCCCGCTGGTGAATACGAGGATGTGAGCTCCAGTCCGAGCAGGGGCTGCTGTGGGGGGGCCAGCG
CGGCAACGGCGCGCAGCGCTGCCGGGGAACGGGGGCGAGCGCGGGAGTCCGGCCTCTCTCCGGCAC
CCAGCGGCGCGGGGAGGGTCCGAGCGCAGGCCCGCGGGACCAGCGCAGCAGTGGCCGAGCAAG
GAGCGCCACCGCAGCACCGGCGCGGGATGGCAGCGCGGTGGCAGCGAGGCTCCAAGTCCCGCAGCC
GCCACAGCCACAGCGGCGAGGAACGGGCCGAGGTCCGCAAGAGCGGCAGCAGCAGCAGCGCGCGCCG
CCGAAAAGCGCTTCGGCCACATCCAGCAGCAGTAGCAGCCGCAAGGACCGGGACTCGAAGGCCACCGC
AGCCGACTAAGTCTCAAGGAGCCGCTTCGGCTACAAGGAACCGCCCAAGGCTACCGGGAGGACA
AGACCGCCTAAGGCTACAGCGGCGCGGTCCCTCAGCCACTGGGAGGCCGGGACGACAGCCCGGT
GTCCACAGGGCCTCTCAGACCTGAGGAGCGCAAGTCCCCAGCCCGCAGGAGGTGGCAGCAGCCCC
TATTCTCGGCGGCTGCCGCTCCCGAGCCCTACAGTCGCGCGCTCCCCAGCTACAGCCGCCACA
GCTCTACGAGCGGGGCGGACGTGTCCCTAGTCCCTACAGCAGCAGCAGTGGCGCGCTCTCGCAG
TCCCTACAGCCCTGTGCTCAGACGGTCTGGAAAATCCCGAAGCAGAAGCCGATTCATCTAGGCATTCA
AGATCTCGTAGCAGGCACAGATTGTCTAGATCCAGAAGTCGTCATTCTAGTATTTCTCTAGCACACTAA
CTCTGAAGAGTAGCCTGGCAGCTGAATTGAACAAGAATAAAAAAGCACGAGCAGCAGAGGCGCAAGAGC
CGCAGAAGCAGCAAAGCTGCAGAAGCAACTAAGGCTGCTGAGGCTGCTGCCAAGGCTGCAAAGCTTCA



[View online »](#)

AACACTTCTACACCTACCAAGGGGAACGCGGAACTAGTGCCAGTGCATCACAAACAAACCATGTGAAGG
ATGTGAAGAAAATTAATAATTGAACATGCACCTTCCCTCAAGTGGTGGAACTTTAAAAATGACAAAGC
AAAAACAAAGCCACCTTTCAGGTAACGAAGGTGGAAAAATAATTTGATTGTAGATAAAGCCACCAAGAAA
GCAGTCATAGTTGGAAAGGAGAGTAAATCTGCTGCTACAAAGGAGGAATCAGTATCTCTTAAGAGAAAA
CCAAACCACTTACACCAAGCATAGGAGCCAAGGAGAAGGACAACATGTAGCTTTAGTCACCTCTACATT
ACCACCGTTACCTTTGCCTCCCATGCTGCCTGAAGATAAAGAAGCTGATAGCTTACGAGGAAATATTTCA
GTAAAAGCAGTTAAAAAAGAAGTAGAAAAAGAACTCCGATGTCTTCTTGTGATTTACCGCTGCCCTCG
AGCTACCAGGAGGAGATGATCTTTCAAAGAGTCCAGAGGAAAAGAAAAACAGCAACACAGTTACATAGTAA
AAGGAGGCCTAAAATATGTGGCCCTCGCTATGGTGAAACCAAAGAAAAAGATATTGACTGGGAAAAACGC
TGCGTGGATAAATTTGATATCATCGGAATTATTGGAGAAGGTACTIONTACGACAAGTTTACAAAGCCAGGG
ATAAAGACACTGGAGAAATGGTAGCCTTAAAAAAGTACGTCTGGATAATGAAAAGGAAGGCTTTCCAAT
TACAGCAATTCGAGAAATTAATAATCTCCGCGAGCTTACCCATCAGAGTATTATCAATATGAAGGAAATA
GTGACTGATAAAGAAGATGCTTTGGATTCAAGAAGGACAAGGTGCATTTTATCTGGTGTTTGAATATA
TGGACCATGATCTGATGGGACTACTGGAATCAGGCTTGGTTCATTTTAAAGAAAATCACATAAAGTCATT
TATGAGACAGCTCATGGAGGGTCTGGATTATTGTCATAAGAAGAACTTTTGCATAGAGATTAATAATGT
TCCAATATCCTTCTAAATAATAGAGGGCAGATAAACTTGCAGACTTTGGACTTGCCTCGATTGTATAGCT
CAGAAGAAAGTCGGCCGTATACTAACAAGTAATTACTIONTATGGTACCGTCCACCTGAACTGCTACTGGG
AGAAGAACGATACACACCAGCCATTGATGTATGGAGCTGTGGCTGTATCCTTGGCGAACTTTCACTAAA
AAACCTATATTTCAAGCAATCAGGAACCTGCACAACAGAAATAATAAGCCGAATATGTGGGAGTCCAT
GTCCTGCAGTGTGGCCTGATGTAATCAAACCTACCATATTTCAACACCATGAAACCAAAGAAGCAATATCG
TCGAAAGTTAAGAGAAGAATTTGTTTTATTCTGCAGCTGCGCTAGACTTATTTGATTACATGCTTGCC
TTGGACTCTAGTAAGCGCTGCACCTGCTGAACAGGCTCTCAGTGCAGTTCCTCCGAGATGTGGAACCT
CAAAAATGCCTCCACCAGATCTCCCTTTATGGCAAGATTGTCATGAGTTATGGAGTAAAAACGAAGAAG
ACAGAAGCAGATGGGCATGACTGATGATGTTTCCACAATTAAGGCCCCAGGAAGGACTTGTCTCTGGGC
TTGGATGACAGCAGAACCAACACACCCAGGGTGTGCTGCCATCTTACAGCTGAAATCTCAGGGCAGCT
CAAATGTGGCACCTGGTAAAAACAGACAGATCCATCAACACCACAACAGGAGTCTTCGAAACCGTTGGG
AGGAATTCAGCCTTCTTCTCAGACCATCCAGCCTAAAGTGGAGACTGATGCTGCCAGGCGGCTGTGCAG
AGTGCATTTGCAGTCTGTTGACTCAGTTAATAAAGGCTCAGCAGTCAAAGCAGAAAGATGTGCTACTAG
AAGAGAGGGAAAAATGGATCGGGACATGAAGCGTCATTACAACCTCAGGCCACCTCCAGAACCTAGCACTCC
GGTGTCCGGACAAGATGACCTCATCCAGCATCAAGATATGAGGATCTTGGAGCTAACGCCAGAACCAGAC
CGGCCTCGAATTCGCCCTGACCAACGACCTCCCGAGCCTCCTGAACCACCACAGTCACTGAGGAAG
ATCTAGATTATCGGACAGAAAACAGCATGTACCACCACCAGTCTTCAATTAACCTGACCCCTATGCCGG
AGTGAAGGCAGCCCTGTTACAGCTGCTTGTCTCAGCATCAGCCCCAGGATGACCCCAAAAGAGAAGGTGGG
ATTGATTATCAAGCAGGAGACACTTACGTGCCACTTCAGACTACAAGGACAACCTTTGGATCCTCTTCTT
TCTCTTCTGCTCCTTATGTTAGCAATGATGGTCTAGGAAGCAGTCTGCTCCACCCTAGAACGACGTAG
TTTCATTGGAAATTCAGATATTCAGTCTTTGGATAACTACAGTACTGCTTCACTCATTCTGGTGGTCCA
CCTCAGCCTTCTGCCTTTCTGAGTCATTTCCAGTTCAGTAGCTGGATATGGAGACATTTACCTCAATG
CTGGTCCCATGTTGTTTGTAGTGGAGACAAGGACCATAGATTTGAATATAGCCATGGTCTATTGCAGTCT
GGCAAACAGCAGTGACCCCTCCACGGGGCCAGAGAGTACTCATCTTTGCCAGCAAAGATGCACAACAT
AACTATGGTGGTAACTTACAGGAAAATCCGAGTGGCCCCAGCCTCATGCATGGACAGACCTGGACTTCTC
CTGCCAAGGACCTGGATATTCACAAGGATACAGGGGACATATTAGCACATCAACTGGCAGAGGCAGAGG
CAGAGGGTTACCATAC

ACGCGTACGCGGCCGCTCGAGCAGAACTCATCTCAGAAGAGGATCTGGCAGCAATGATATCCTGGATT
ACAAGGATGACGACGATAAGGTTTAA

Protein Sequence: >RC224952 representing NM_031267
 Red=Cloning site Green=Tags(s)

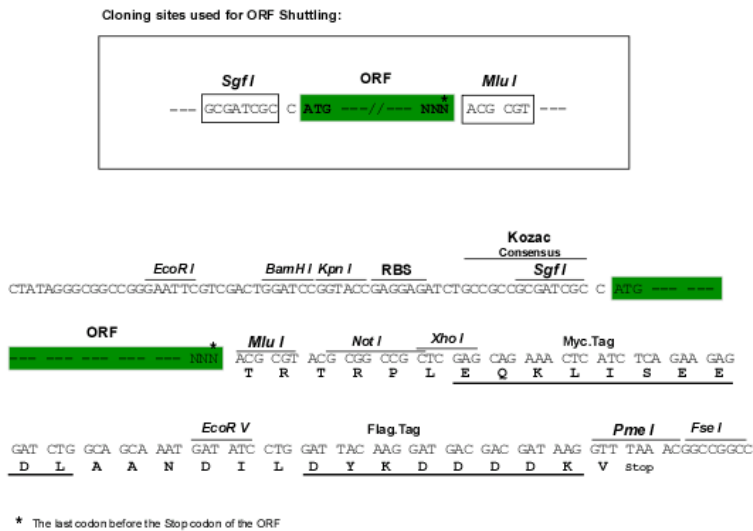
MPSSSDTALGGGGGLSWAEKKLEERRKRRRFLSPRQPPLLPLLPQQLQPPPPPLFLAAPGTAAAA
 AAAAAASSSCFSPGPPLGVKRLARGRGRAGRRKRRRGRPRAGQAEKRRVFLPQPQQDGGGGASSGGGV
 TPLVEYEDVSSQSEQLLLGGASAATAAAGGTGGSGGSPASSSGTQRRGEGSERRRRDRSSSSGRSK
 ERHREHRRRDGQRGGSEASKSRSRSHSHSGEERA EVAKSGSSSSSGRRKSASATSSSSSRKDRDSKAHR
 SRTKSSKEPPSAYKEPPKAYREDKTEPKAYRRRSL SPLGGRDDSPVSHRASQSLRSRSPSPAGGSSP
 YSRRLPRSPSPYSRHRSPYSRHSYERGGDVSPSPYSSSSWRRSRSPYSPVLRSGKSRSRSPYSSRHS
 RSRSRHRLSRSRSHSSI SPSTL TLKSSLAELNKNKARAAEAARAAEAAKAAEATKAAEAAAKAAS
 NTSTPTKNAETSASASQTNHVKDVKKIKIEHAPSPSSGGTLKNDKAKTKPPLQVTKVENNLIVDKATK
 AVIVGKESKAATKEESVSLKEKTKPLTPSIGAKEKEQHVALVTSTL PPLPLPMLPEDKEADSLRGNIS
 VKAVKKEVEKKLRCLLADLPLPELPGDDL SKSPEEKTATQLHSKRRPKICGPRYGETKEKDIDWGR
 CVDKFDIIGIIGEGTYGQYKARDKDTGEMVALKKVRLDNEKEGFPITAI REIKILRQLTHQSIINKEI
 VTDKEDALDFKKDKGAFYLVFEYMDHLMGLLESLVHFNENHIKSFMRQLMEGLDYCHKKNFLHRDIK
 SNILLNRRGQIKLADFLARLYSSESRPYTNKVI TLWYRPELLLGEERYTPAIDVWSCGICILGELFTK
 KPFIQANQELAQLELISRICGSPCPAVWPDVIKLPYFNTMKPKQYRRKL REEFVFI PAAALDFDYMLA
 LDPSKRCTAEQALQCEFLRDVEPSKMPPDLPLWQDCHELWSKRRRQKQMGMTDDVSTIKAPRKDL SLG
 LDDSRNTNPQGVLPSSQLKSQGSNNVAPGEKQTDPTPQQESSKPLGGIQPSSQTIQPKVETDAAQAAVQ
 SAFAVLLTQLIKAQQSKQKDVLLLEERENGSGHEASLQLRPPPEPSTPVSGQDDL IQHQDMRILEL TPEPD
 RPRILPPDQRPPEPEPPPVTEEDLDYRTENQHVP TSSSLDPHAGVKAALLQLLAHQHPQDDPKREGG
 IDYQAGDTYVSTSDYKDNFGSSSFSSAPYVNDGLGSSSAPPLERRSFIGNSDIQSLDNYSTASSHSGGP
 PQPFAFSEFPSSVAGYDIIYLNAGPMLFSGDKDHRFEYSHGPIAVLANSSDPSTGPESTHPLPAKMHN
 NYGGNLQENPSGSLMHGQWTWSPAQGPYSQGYRGIHISTSTGRGRGRGLPY

TRTRPLEQKLISEEDLAANDILDYKDDDDKV

Chromatograms: https://cdn.origene.com/chromatograms/mg3926_h01.zip

Restriction Sites: SgfI-MluI

Cloning Scheme:

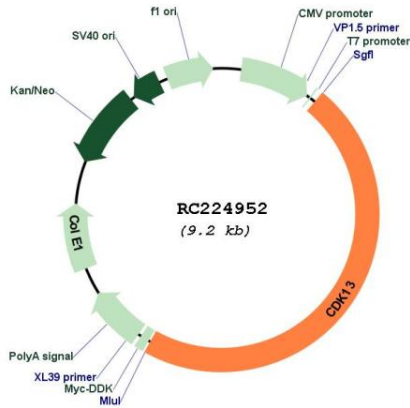


ACCN: NM_031267

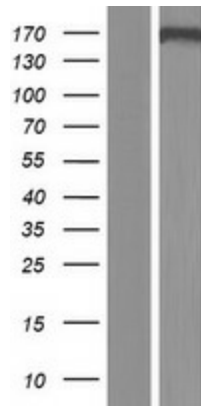
ORF Size: 4356 bp

OTI Disclaimer:	The molecular sequence of this clone aligns with the gene accession number as a point of reference only. However, individual transcript sequences of the same gene can differ through naturally occurring variations (e.g. polymorphisms), each with its own valid existence. This clone is substantially in agreement with the reference, but a complete review of all prevailing variants is recommended prior to use. More info
OTI Annotation:	This clone was engineered to express the complete ORF with an expression tag. Expression varies depending on the nature of the gene.
Components:	The ORF clone is ion-exchange column purified and shipped in a 2D barcoded Matrix tube containing 10ug of transfection-ready, dried plasmid DNA (reconstitute with 100 ul of water).
Reconstitution Method:	<ol style="list-style-type: none">1. Centrifuge at 5,000xg for 5min.2. Carefully open the tube and add 100ul of sterile water to dissolve the DNA.3. Close the tube and incubate for 10 minutes at room temperature.4. Briefly vortex the tube and then do a quick spin (less than 5000xg) to concentrate the liquid at the bottom.5. Store the suspended plasmid at -20°C. The DNA is stable for at least one year from date of shipping when stored at -20°C.
RefSeq:	NM_031267.3 , NP_112557.2
RefSeq Size:	5066 bp
RefSeq ORF:	4359 bp
Locus ID:	8621
UniProt ID:	Q14004
Cytogenetics:	7p14.1
Domains:	pkinase, TyrKc, S_TKc
Protein Families:	Druggable Genome, Protein Kinase
MW:	158.3 kDa
Gene Summary:	The protein encoded by this gene is a member of the cyclin-dependent serine/threonine protein kinase family. Members of this family are well known for their essential roles as master switches in cell cycle control. The exact function of this protein has not yet been determined, but it may play a role in mRNA processing and may be involved in regulation of hematopoiesis. Alternatively spliced transcript variants have been described.[provided by RefSeq, Dec 2009]

Product images:



Circular map for RC224952



Western blot validation of overexpression lysate (Cat# [LY410606]) using anti-DDK antibody (Cat# [TA50011-100]). Left: Cell lysates from untransfected HEK293T cells; Right: Cell lysates from HEK293T cells transfected with RC224952 using transfection reagent MegaTran 2.0 (Cat# [TT210002]).