

## Product datasheet for **RC224939**

### **FBXL6 (NM\_024555) Human Tagged ORF Clone**

#### **Product data:**

Product Type:	Expression Plasmids
Product Name:	FBXL6 (NM_024555) Human Tagged ORF Clone
Tag:	Myc-DDK
Symbol:	FBXL6
Synonyms:	FBL6; FBL6A; PP14630
Mammalian Cell Selection:	Neomycin
Vector:	pCMV6-Entry (PS100001)
E. coli Selection:	Kanamycin (25 ug/mL)



[View online »](#)

**ORF Nucleotide Sequence:**

>RC224939 representing NM\_024555  
 Red=Cloning site Blue=ORF Green=Tags(s)

TTTTGTAATACGACTCACTATAGGGCGGCCGGGAATTCGTCGACTGGATCCGGTACCGAGGAGATCTGCC  
 GCC**CGGATCGCC**

ATGGCTGCCCCAGCTCCCGGCAGTCCGACGCAGAGCCCGGGCAGCGCCGCGGCCCGCTCGGCCGAGG  
 ACTGGTGGTGGGACCGGCTGGCGCCGAGGGGCTCGGGGTACCACCTGCTGCAGTCCGACAGCATGCTGCT  
 GGTGCTGTCCGAACCCGGCCCCGCCCGGCCCGCACAGCGGCGCTTCCCGCCGACTCCCCGGCAG  
 CCGCCCCGGGGCCCCAGCGCCGCGGCCAAGCCCAAGGCCGGGCTCAGGTCGAGGCGGGCCGCGCCG  
 CACCCGCACCGGCACCCACGCCACGCCGAGGAAGGGCCGACGCGGGCTGGGAGACCGCATTCCCTT  
 GGAAATCTGGTGCAGATTTTCGGGTGTTGGTGGCGGCGGACGGCCCCATGCCCTTCTGGGCAGGGCT  
 GCGCGCTGTGCCCGCTGGCAGGAGGCCGTTCCCAACCCGCGCTCTGGCACACCGTGACCCTGTCGT  
 CCCCCTGGTTCGGCCGGCTGCCAAGGGCGGGTCAAGGCGGAGAAGAAGCTCCTTGCTTCCCTGGAGTG  
 GCTTATGCCCAATCGGTTTTACAGCTCCAGAGGCTGACCCTCATCCACTGGAAGTCTCAGTGGTAGGT  
 GAGTGTGCTCCTCGGCTCACTTTCTCAAGCTCTCCGGCTGCCACGGTGTGACTGCTGACGCTCTGGTCA  
 TGCTAGCCAAAGCCTGCTGCCAGCTCCATAGCCTGGACCTACAGCACTCCATGGTGGAGTCCACAGCTGT  
 GGTGAGCTTCTGGAGGAGGCAGGGTCCCGAATGCGCAAGTTGTGGCTGACCTACAGCTCCAGACGACA  
 GCCATCCTGGGCGCACTGCTGGGAGCTGCTGCCCCAGCTCCAGGTCCTGGAGGTGAGCACCGGCATCA  
 ACCGTAATAGCATTCCCTTCAGCTGCCTGTGAGGCTCTGCAGAAAGGCTGCCCTCAGCTCCAGGTGCT  
 GCGGCTGTTGAACCTGATGTGGCTGCCAAGCCTCCGGGACGAGGGTGGCTCCCGGACCAAGGCTCCCT  
 AGCCTAGAGGAGCTCTGCCTGGCGAGCTCAACCTGCAACTTTGTGAGCAACGAGGTCCTGGGCCGCTAC  
 TCCACGGCTCTCCCAACCTGCGCTTACTGGATCTTCGTGGCTGTGCGCGCATCACGCCGGCTGCCCTCA  
 GGATCTGCCATGTCGGGAGCTGGAGCAGCTTTCATCTGGGCTGTATGGCAGCTCAGACCGGCTGACTCTA  
 GCCAAGGAGGGCAGCCCTTTTTGACCCAGAAGTGGTGCATACACTGCGAGAAGTGGACTTGAGTGGCC  
 AGGGGTTCAAGTGAAGGACCTGGAGCAGGCCCTGGTGCCTTCTAAGCACCCCTGGGGCTCACACCC  
 AGCCCTGTGCTCTTAACTCAGGGGCACCCGGGTCACACCAAGCACTGTGAGTCTGTGATCAGCAGC  
 TGCCCGGGCTGCTCTACCTCAACTGGAGTCTGCCGCTGCCTTCCCGGGGCTGAAGCGGGCTACC  
 GGGGCTGGAGGAAGTCCAGTGGTGTCTGGAGCAGCTGCTACCAGCCCTCACCCAGC

**ACGCGT**ACGCGGCCGCTCGAGCAGAACTCATCTCAGAAGAGGATCTGGCAGCAAATGATATCTGGATT  
 ACAAGGATGACGACGATAAGGTTTAA

**Protein Sequence:**

>RC224939 representing NM\_024555  
 Red=Cloning site Green=Tags(s)

MAAPASRQVRRRARAPRPRSAEDWWDR LAPRGSYHLLQSDSM LVLSEPGPARPRAQRASRRTPRQ  
 PPRGPSAAAKPKAGLRSEAAAAPAPAPTPTPEEGPDAGWDRIPL EILVQIFGLLVAADGPM PFLGRA  
 ARVCRRWQEAASQPALWHTVTLSSPLVGRPAKGGVKA EKLLASLEWLMPNRFSQLQRLTLIHWKSQLVG  
 ECCPRLTFLKLSGCHGVTADALVMLAKACQLHSLDLQHSMVESTAVVSFLEEAGSRMRKWLTYSSQTT  
 AILGALLGSCCPQLQVLEVSTGINRNSIPLQLPVEALQK GCPQLQVLRLLNLMWLPKPPGRGVAPGPGFP  
 SLEELCLASSTCNFVSNEVLRLLHGSPNLRLLDLRGCARITPAGLQDLPCRELEQLHLGLYGTSDRLTL  
 AKEGSPFLTQKWCHTLRELDL SGQGFSEKDLEQALAAFLSTPGGSHPALCSLNLGRTRVTPSTVSSVISS  
 CPGLLYLNL ESCRCLPRGLKRAYRGLEEVQWCLEQLLTSPSPS

**TRTRPLEQKLI**SEEDLAANDILDYKDDDDKV

**Chromatograms:**

[https://cdn.origene.com/chromatograms/mk8044\\_h03.zip](https://cdn.origene.com/chromatograms/mk8044_h03.zip)

**Restriction Sites:**

Sgfl-MluI

**Cloning Scheme:**


**ACCN:** NM\_024555

**ORF Size:** 1599 bp

**OTI Disclaimer:** The molecular sequence of this clone aligns with the gene accession number as a point of reference only. However, individual transcript sequences of the same gene can differ through naturally occurring variations (e.g. polymorphisms), each with its own valid existence. This clone is substantially in agreement with the reference, but a complete review of all prevailing variants is recommended prior to use. [More info](#)

**OTI Annotation:** This clone was engineered to express the complete ORF with an expression tag. Expression varies depending on the nature of the gene.

**Components:** The ORF clone is ion-exchange column purified and shipped in a 2D barcoded Matrix tube containing 10ug of transfection-ready, dried plasmid DNA (reconstitute with 100 ul of water).

**Reconstitution Method:**

1. Centrifuge at 5,000xg for 5min.
2. Carefully open the tube and add 100ul of sterile water to dissolve the DNA.
3. Close the tube and incubate for 10 minutes at room temperature.
4. Briefly vortex the tube and then do a quick spin (less than 5000xg) to concentrate the liquid at the bottom.
5. Store the suspended plasmid at -20°C. The DNA is stable for at least one year from date of shipping when stored at -20°C.

**RefSeq:** [NM\\_024555.4](#)

**RefSeq Size:** 1781 bp

**RefSeq ORF:** 1602 bp

**Locus ID:** 26233

**UniProt ID:** [Q8N531](#)

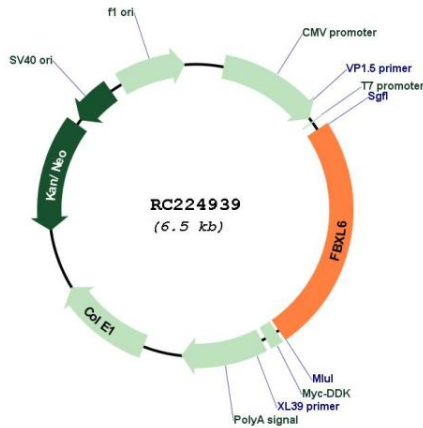
**Cytogenetics:** 8q24.3

**Domains:** LRR, F-box, LRR\_CC

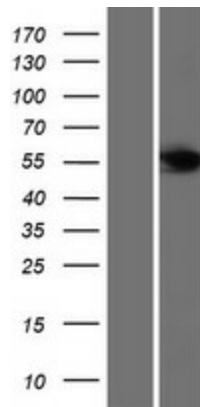
**MW:** 57.7 kDa

**Gene Summary:** This gene encodes a member of a family of proteins that are characterized by an F-box motif. The encoded protein also contains leucine-rich repeats. F-box-containing proteins comprise one of the subunits of the SCF (SKP1-cullin-F-box) complex, which functions in phosphorylation-dependent ubiquitination. Alternative splicing results in multiple transcript variants. [provided by RefSeq, Jul 2013]

**Product images:**



Circular map for RC224939



Western blot validation of overexpression lysate (Cat# [LY411229]) using anti-DDK antibody (Cat# [TA50011-100]). Left: Cell lysates from untransfected HEK293T cells; Right: Cell lysates from HEK293T cells transfected with RC224939 using transfection reagent MegaTran 2.0 (Cat# [TT210002]).