

## Product datasheet for RC224937

### CLECSF6 (CLEC4A) (NM\_016184) Human Tagged ORF Clone

#### Product data:

Product Type:	Expression Plasmids
Product Name:	CLECSF6 (CLEC4A) (NM_016184) Human Tagged ORF Clone
Tag:	Myc-DDK
Symbol:	CLECSF6
Synonyms:	CD367; CLECSF6; DCIR; DDB27; HDCGC13P; hDCIR; LLIR
Mammalian Cell Selection:	Neomycin
Vector:	pCMV6-Entry (PS100001)
E. coli Selection:	Kanamycin (25 ug/mL)
ORF Nucleotide Sequence:	>RC224937 representing NM_016184 Red=Cloning site Blue=ORF Green=Tags(s)

TTTTGTAATACGACTCACTATAGGGCGCCGGAATTCGTCGACTGGATCCGGTACCGAGGAGATCTGCC  
GCC**CGATCGCC**

ATGACTTCGAAATCACTTATGCTGAAGTGAGGTTCAAAAATGAATTCAGTCCTCAGGCATCAACACAG  
CCTCTTCTGCAGCTTCCAAGGAGAGGACTGCCCTCTCAAAAGTAATACCGGATCCCAAGCTGCTTTG  
TGCCTCACTGTTGATATTTTCTGCTATTGGCAATCTCATTCTTTATTGCTTTTGTCAATTTCTTTCAA  
AAATATTCTCAGCTTCTGAAAAAAGACTACAAAAGAGCTGGTTCATACAACATTGGAGTGTGTAAAA  
AAAATATGCCCGTGAAGAGACAGCCTGGAGCTGTGCCAAAGAATTGGAAGTCATTTAGTTCCAAGT  
CTACTTTATTTCTACTGAATCAGCATCTTGCCAAGACAGTGAGAAGGACTGTGCTAGAATGGAGGCTCAC  
CTGCTGGTGATAAACTCAAGAAGAGCAGGATTTTCATCTCCAGAATCTGCAAGAAGAATCTGCTTATT  
TTGTGGGGCTCTCAGATCCAGAAGGTCAGCGACATTGGCAATGGGTTGATCAGACACCATACAATGAAA  
TTCCACATTCTGGCATCCACGTGAGCCAGTGATCCCAATGAGCGCTGCGTTGTGCTAAATTTTCGTA  
TCACCCAAAAGATGGGGCTGGAATGATGTTAATTGTCTTGGTCTCAAAGGTCAGTTTGTGAGATGATGA  
AGATCCACTTA

**ACGCGT**ACGCGGCCGCTCGAGCAGAACTCATCTCAGAAGAGGATCTGGCAGCAAATGATATCCTGGATT  
ACAAGGATGACGACGATAAGGTTTAA



[View online »](#)

**Protein Sequence:** >RC224937 representing NM\_016184  
Red=Cloning site Green=Tags(s)

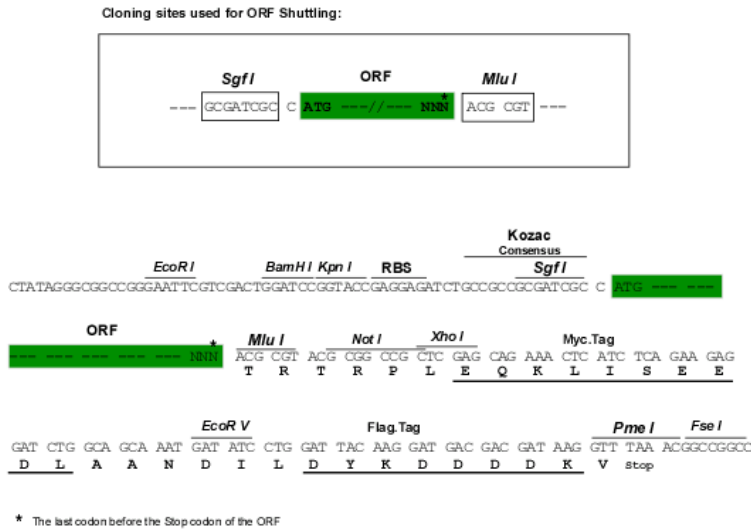
MTSEITYAEVRFKNEFKSSGINTASSAASKERTAPLKSNTGFPKLLCASLLIFFLLLAISFFIAFVIFQ  
 KYSQLEKKTTELVHTTLECVKKNMPVEETAWSCCPKNWKSFSSNCYFISTESASWQDSEKDCARMEAH  
 LLVINTQEEQDFIFQNLQEE SAYFVGLSDPEGQRHWQWVDQTPYNESSTFWHPREPSDPNERCVLNF  
 RSPKRWGWNDVNCLGPQRSVCEMMKIHL

TRTRPLEQKLISEEDLAANDILDYKDDDDKV

**Chromatograms:** [https://cdn.origene.com/chromatograms/mk6108\\_g05.zip](https://cdn.origene.com/chromatograms/mk6108_g05.zip)

**Restriction Sites:** SgfI-MluI

**Cloning Scheme:**



**ACCN:** NM\_016184

**ORF Size:** 711 bp

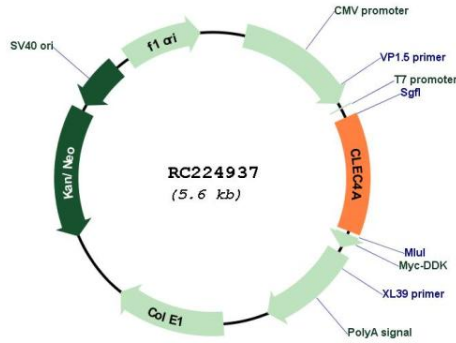
**OTI Disclaimer:** The molecular sequence of this clone aligns with the gene accession number as a point of reference only. However, individual transcript sequences of the same gene can differ through naturally occurring variations (e.g. polymorphisms), each with its own valid existence. This clone is substantially in agreement with the reference, but a complete review of all prevailing variants is recommended prior to use. [More info](#)

**OTI Annotation:** This clone was engineered to express the complete ORF with an expression tag. Expression varies depending on the nature of the gene.

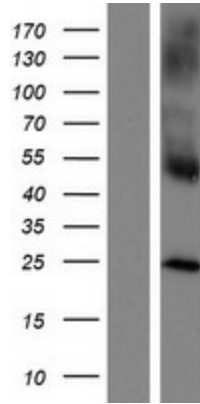
**Components:** The ORF clone is ion-exchange column purified and shipped in a 2D barcoded Matrix tube containing 10ug of transfection-ready, dried plasmid DNA (reconstitute with 100 ul of water).

<b>Reconstitution Method:</b>	<ol style="list-style-type: none"><li>1. Centrifuge at 5,000xg for 5min.</li><li>2. Carefully open the tube and add 100ul of sterile water to dissolve the DNA.</li><li>3. Close the tube and incubate for 10 minutes at room temperature.</li><li>4. Briefly vortex the tube and then do a quick spin (less than 5000xg) to concentrate the liquid at the bottom.</li><li>5. Store the suspended plasmid at -20°C. The DNA is stable for at least one year from date of shipping when stored at -20°C.</li></ol>
<b>RefSeq:</b>	<a href="#">NM_016184.3</a>
<b>RefSeq Size:</b>	1291 bp
<b>RefSeq ORF:</b>	714 bp
<b>Locus ID:</b>	50856
<b>UniProt ID:</b>	<a href="#">Q9UMR7</a>
<b>Cytogenetics:</b>	12p13.31
<b>Domains:</b>	CLECT
<b>Protein Families:</b>	Druggable Genome, Transmembrane
<b>MW:</b>	27.3 kDa
<b>Gene Summary:</b>	<p>This gene encodes a member of the C-type lectin/C-type lectin-like domain (CTL/CTLD) superfamily. Members of this family share a common protein fold and have diverse functions, such as cell adhesion, cell-cell signalling, glycoprotein turnover, and roles in inflammation and immune response. The encoded type 2 transmembrane protein may play a role in inflammatory and immune response. Multiple transcript variants encoding distinct isoforms have been identified for this gene. This gene is closely linked to other CTL/CTLD superfamily members on chromosome 12p13 in the natural killer gene complex region. [provided by RefSeq, Jul 2008]</p>

Product images:



Circular map for RC224937



Western blot validation of overexpression lysate (Cat# [LY402515]) using anti-DDK antibody (Cat# [TA50011-100]). Left: Cell lysates from untransfected HEK293T cells; Right: Cell lysates from HEK293T cells transfected with RC224937 using transfection reagent MegaTran 2.0 (Cat# [TT210002]).