

## Product datasheet for RC224930

### KIF4B (NM\_001099293) Human Tagged ORF Clone

#### Product data:

Product Type:	Expression Plasmids
Tag:	Myc-DDK
Symbol:	KIF4B
Mammalian Cell Selection:	Neomycin
Vector:	pCMV6-Entry (PSI00001)
E. coli Selection:	Kanamycin (25 ug/mL)

ORF Nucleotide Sequence: >RC224930 representing NM\_001099293  
Red=Cloning site Blue=ORF Green=Tags(s)

TTTTGTAATACGACTCACTATAGGGCGGCCGGGAATTCGTCGACTGGATCCGGTACCGAGGAGATCTGCC  
GCCGCGATCGCC

ATGAAGGAAGAGGTGAAGGGAATTCCTGTAAGAGTGGCACTGCGTTGTCGCCCTCTGGTCCCAAGAGA  
TTAGCGAGGGCTGCCAGATGTGCCTTCCCTCGTGCCCGGGAGACTCAGTGGTGGTTGGTACTGATAA  
ATCCTTACCTACGATTTTGTGTTTGACCCTGTACTGAGCAGGAAGAAGTCTTCAATAAAGCAGTAGCG  
CCGCTCATAAAGGCATATTTAAAGGATATAATGCAACGGTCTGGCCTATGGGAGACTGGCTCTGGAA  
AAACCTATTCAATGGGAGGTGCATACACTGCGGAGCAGGAGAATGAACCAACAGTTGGCATTATTCCTAG  
GGTAATACAAGTCTCTTCAAAGAAATTTGATAAAAAGAGTGACTTTGAATTTACTCTGAAAGTGTCTTAC  
TTAGAGATTTACAATGAAGAAATTTGGATCTTCTATGCCCATCTCGTGAGAAAAGCTCAAAATAAATATAC  
GGGAGGATCCTAAGGAAGGCATAAAGATTGTGGGACTCACTGAGAAGACTGTTTTAGTTGCCTGGATAC  
TGTTTTCTGTTGGAGCAGGGCAACAACTCTAGGACTGTGGCTCCACAGCTATGAACTCCAGTCGTC  
CGATCTCATGCCATCTTACAATCTCCATAGAGCAAAGAAAAGAAAAGTGAAGAATTCAGCTTTTCGCT  
CCAAGCTGCATCTTGTAGATCTCGCTGGATCAGAAAAGCAGAAAAGAAAACCAAGGCTGAAGGGGATCGTCT  
AAAAGAGGGTATTAATATTAACCGAGGCCCTCTATGCTTGGAAAATGTAATCAGTGCTCTTGGAGATGAC  
AAAAGGGTAGCTTTGTGCCCTACAGAGATTCCAAGTTAACTCGACTGCTGCAAGATTCTCTAGGAGGTA  
ACAGCCCACTCTTATGATAGCCTGTGTGAGTCTGCTGACTCCAATCTAGAGGAAACATTAAGTACCCT  
TCGCTATGCTGACAGAGCAAGAAAAATCAAGAACAACCTATTGTTAATTTGATCCCCACACAGCTGAA  
CTTAATCATCTAAAGCAACAGGTACAACAGCTACAAGTCTTGTGCTACAAGCCATGGAGGTACCTGCT  
CTGGATCTATAAATGCAGAACCATCAGAGAATCTACAATCCCTGATGGAGAAGAATCAGTCCCTGGTAGA  
GGAGAATGAAAAATTAAGTCGTTGTCTGAGCAAGGCAGCTGGTCAGACAGCCAGATGTTGGAGAGGATC  
ATTTTGACAGAGCAAGTGAATGAAAACTGAACGCCAAGCTAGAAGAGCTCAGGCAGCATGTGGCCTGCA  
AGCTGGATCTTCAAAGCTAGTGGAGACTTTGGAAGACCAGGAATTTGAAAGAAAATGTAGAGATAATTTG  
TAACCTGCAGCAACTGATTACCCAGTTATCAGATGAACTGTTGCTTGCACGGCTGCAGCCATTGATACT  
GCGGTAGAAGAAGAAGCTCAAGTGGAAACCACTCCAGAGACAAGCAGGTCTTCTGACGCTTTTACCACT  
AGCATGCTCTCCATCAAGCTCAGATGTCTAAGGAGGTGGTTGAGTTGAATAACGCCCTTGCACTGAAAGA  
GGCCCTAGTTAGGAAGATGACTCAGAACGACAACCACTACAGCCATTAGTTTCAATACCAGGATAAC



ATAAAAATCTAGAATTAGAAGTCATCAATCTGCAAAAAGGAAAAGGAAGAATTGGTTCGTGAACTTCAGACAGCAAAAGAAGAATGTCAACCAAGCCAAGCTGAGTGAGCACCGCCACAACTTCTCCAGGAGCTGGAGGGTCAAATAGCTGATCTGAAGAAGAACTGAATGAGCAGTCCAACTTCTGAAACTAAAGGAATCCACAGAGCGTACTGTCTCAAAGCTGAACCAAGAGATATGGATGATGAAAAACCAGCGGGTACAGTTAATGCCTCAAA TGAAAGAGGATGCTGAGAAGTTAGACAATGGAAGCAGAAAAAGCAAAGAAGTAATACAGTTGAAAGA ACGAGACCGTAAGAGGCAATATGAGCTGCTCAAACCTGAAAGAACTTCCAGAAACAATCCAGTGTGCTC AGACGTAAAACGGAGAGGCAGCAGCTGCCAACAGCGACTCAAGGATGCTCTCCAGAAACAACGAGAGG TCACAGATAAGCGGAAAGAGACTCAGAGCCATGGAAAGGAAGTATTGCAGCTCGAGTGAGGAATGGCT TGGAAATGAAATTGAGTTATGGTCACTGAGGAAAGCCAAACGCCATCTGAATGACCTCCTTGAAGAC AGAAAGATCCTGGCTCAGGATGTGGTTCAACTCAAAGAAAAAGGAATCTCGGGAGAATCCACCTCCTA AACTCCGGAAGTGTACATTCTCCCTTCTGAGGTGCATGGTCAAGTTTTGGAGTCAGAAGATTGTATTAC AAAACAGATTGAAAGCCTAGAGACTGAAATGGAACCTCAGGAGTGCAGATTGCTGACCTACAGCAGAAG CTGCTGGATGCAGAAAGTGAAGATAGGCCAAAACAATGCTGGGAGAATATTGCCACCATTCTGGAAGCCA AGTGTGCCCTGAAATATTTGATTGGAGAGCTGGTCTCCTCCAAAATACATGTCACCAAACCTGAAAAACG CCTGAGACAGACAGCAAGGCCAGCTGTGCTGACATGCAGAAGTGTATTTGAGGAACAAAATCATTTTTCT GAGATAGAGACAGAGTTACAAGCTGAGCTGGTCAAGTGGAGCAACAGCACCAAGAGAAGGTGCTATACC TTGTCAGCCAGCTGCAGGAAAGCCAAATGGCAGAGAAGCAGTTAGAGAAATCAGCCAGTGAAAGGAAACA ACAGCTGGTGAACACATGCAGTGTGAGGATGAAGAACTTGAGAAGATGCGAGAAGTGTGTGAGCAAAAT CAGCAGCTTCTCAAGAGAATGAAATCATCAAGCAGAACTGATCCTCCTCAGGTAGCCAGCAGACAGACA AACATCTTCTCAATGATACCCTTCTATCTCCAGACTTCTTTTGAATATATCCACCTAAGCCAAAAC TTCTCGTGTAAAGAAAAGTTTCTGGAGCAAGCATGGACATCGAGGATCTAAAATATTGTTGAGAGCAT TCTGTGAATGAGCATGAAGATGGTGTGGTGTGGCAGCAGTGTGAGGGGGATGATGAGGAATGGAAGC CAACAAAATAGTCAAGGTGTCCAGGAAGAACATCCAAGGGTGTCTGCAAGGGCTGGTGTGGGAACAA GCAGTGTGGGTGCAGGAAGCAAAAGTCAAGTGTGGTGTGGACTGTAGCTGTGACCCCAAAAGTGTCCG AACCAGCAGCAAGGCAAGGATAGCTTGGGCACTGTTGAACAGACCCAGGATTCCGAAGGCTCCTTCAAAC TGGAGGATCCTACCGAGGTGACCCAGGATTGAGCTTCTTTAACCTGTCTGTGCCACCCCAATAGCAA GATCCTGAAAGAGATGTGTGACATGGAGCAGGTGCTGCAAGAAGACTGCTCCAGCTCCCTCCCTTTT GACCTCCAGAGTCAAAACATGGAGCAACAGAAATACCAACAAAATAGCCTCCAGGGAAGAAAAAGAAAC GAGCTCTGGCTAGCAACACCAGCTTCTTCTGCTGCTCCCTATCGAAGAAGAGGCCAC

ACGCGTACGCGGCCGCTCGAGCAGAACTCATCTCAGAAGAGGATCTGGCAGCAATGATATCCTGGATT ACAAGGATGACGACGATAAGGTTTAA

**Protein Sequence:**

>RC224930 representing NM\_001099293  
 Red=Cloning site Green=Tags(s)

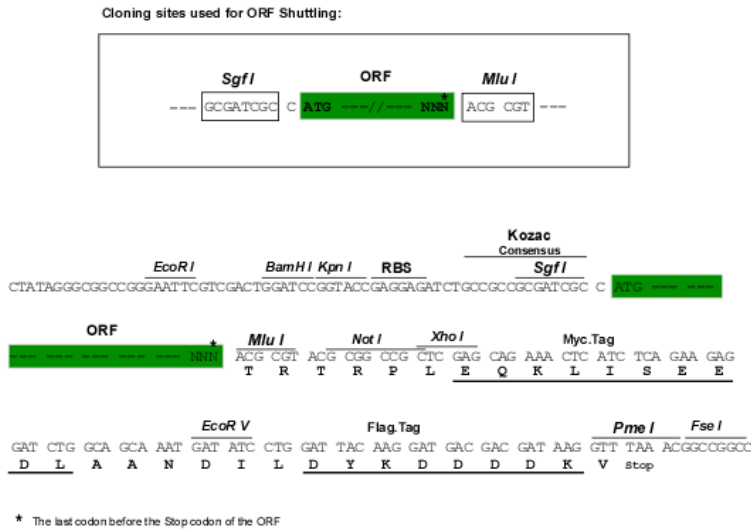
MKEEVKGIPIRVALRCRPLVPKEISEGQMCLSFVPGETQVVVGTDKSFTYDFVDPCTEQEEVFNKAVA PLIKGIFKGYNATVLAYQGTGSGKTYSMGGAYTAEQENEPTVGIIPRVIQLLFKEIDKKSDFEFTLKVS YLEIYNEEILDLLCPSREKAQINIREDPKEGIKIVGLTEKTVLVALDVTSCLEQGNNSRTVASTAMNSQSS RSHAFITISIEQRKSDKNCSFRSKLHLVDLAGSERQKKTAEKDRLKEGININRGLCLGNVISALGDD KKGFSVPYRDSKLRLLQDSLGGNSHTLMIACVSPADSNLEETLSTLRYADRARKIKNKPIVNI DPHTAE LNHLKQVQQLQVLLQAHGGTLPGSINAEPSENQLSMEKNQSLVEENEKLSRCLSKAAGQTAQMLERI ILTEQVNEKLNAKLEELRQHVACKLDLQKL VETLEDQELKENVEIICNLQQLITQLSDETVACTAAIDT AVEEEA QVETSPETSRSDDAFTTQHALHQAQMSKEVVELNNALALKEALVRKMTQNDNQLQPIQFYQDN IKNLELEVINLQKEKEELVRELQTAKKNVNQAKLSEHRHKLLEQLEGIADLKKKLNQSKLLKLESTE RTVSKLNQEIWMMKNQRVQLMRQMKEDA EKFRQWKQKDKDEVIQLKERDRKRQYELLKLERNFQKQSSVL RRKTEAAAAANKRLKDALQKQREVTDKRKETQSHGKEGIAARVRNWLGNIEVMVSTEEAKRHLNDLLED RKILAQDVVQLKEKESRENPPPKLRKCTFSLSEVHGQVLESEDCITKQIESLET EMELRSAQIADLQK LLDASEDRPKQCWENIATILEAKCALKYLIGELVSSKIHVTKLENSLRQSKASCADMQKMLFEEQNHS EIETELQAEVLRMEQQHQEKVLYLVSQLESQMAEKQLEKSASEKEQQLVSTLQCQDEELEKMRVCEQN QQLLQENEI IKQKLI LLQVASRQKHL PNDLLSPDSSF EYIPPKPKPSRVKEKFL EQSMDIEDLKYCSEH SVNEHEDGDGDGDSDEGDDEEWKPTKLKVS RKNIQGCCKGWCGNKQCGCRKQKSDCGVDCSDPTKCR NRQQGKDSLGTVEQTQDSEGSFKLEDPTEVTPGLSFFNPVCATPNSKILKEMCDMEQVLSKKTAPAPSPF DLPESKHGATEYQNKPPGKKKKRALASNTSFFSGCSPIEEEAH

TRTRPLEQKLI SEEDLAANDILDYKDDDDKV

**Chromatograms:** [https://cdn.origene.com/chromatograms/mk8044\\_h07.zip](https://cdn.origene.com/chromatograms/mk8044_h07.zip)

**Restriction Sites:** SgfI-MluI

**Cloning Scheme:**



**ACCN:** NM\_001099293

**ORF Size:** 3702 bp

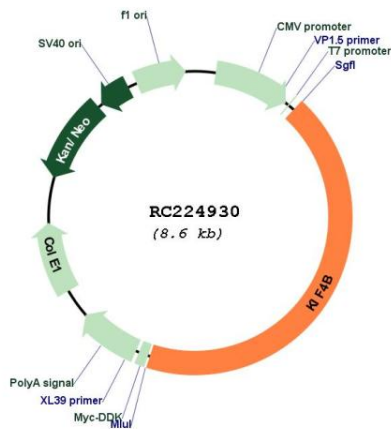
**OTI Disclaimer:** The molecular sequence of this clone aligns with the gene accession number as a point of reference only. However, individual transcript sequences of the same gene can differ through naturally occurring variations (e.g. polymorphisms), each with its own valid existence. This clone is substantially in agreement with the reference, but a complete review of all prevailing variants is recommended prior to use. [More info](#)

**OTI Annotation:** This clone was engineered to express the complete ORF with an expression tag. Expression varies depending on the nature of the gene.

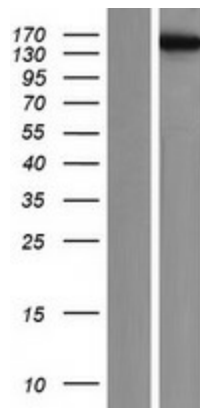
**Components:** The ORF clone is ion-exchange column purified and shipped in a 2D barcoded Matrix tube containing 10ug of transfection-ready, dried plasmid DNA (reconstitute with 100 ul of water).

- Reconstitution Method:**
1. Centrifuge at 5,000xg for 5min.
  2. Carefully open the tube and add 100ul of sterile water to dissolve the DNA.
  3. Close the tube and incubate for 10 minutes at room temperature.
  4. Briefly vortex the tube and then do a quick spin (less than 5000xg) to concentrate the liquid at the bottom.
  5. Store the suspended plasmid at -20°C. The DNA is stable for at least one year from date of shipping when stored at -20°C.

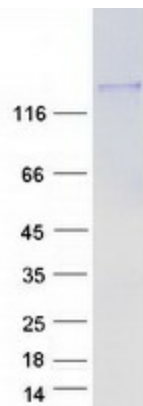
<b>Note:</b>	Plasmids are not sterile. For experiments where strict sterility is required, filtration with 0.22um filter is required.
<b>RefSeq:</b>	<a href="#">NM_001099293.3</a>
<b>RefSeq Size:</b>	4426 bp
<b>RefSeq ORF:</b>	3705 bp
<b>Locus ID:</b>	285643
<b>UniProt ID:</b>	<a href="#">Q2VIQ3</a>
<b>Cytogenetics:</b>	5q33.2
<b>Protein Families:</b>	Druggable Genome
<b>MW:</b>	139.9 kDa
<b>Gene Summary:</b>	This gene is an intronless retrocopy of kinesin family member 4A. The protein encoded by this gene is a microtubule-based motor protein that plays vital roles in anaphase spindle dynamics and cytokinesis. [provided by RefSeq, Jul 2016]

**Product images:**

Circular map for RC224930



Western blot validation of overexpression lysate (Cat# [LY420429]) using anti-DDK antibody (Cat# [TA50011-100]). Left: Cell lysates from un-transfected HEK293T cells; Right: Cell lysates from HEK293T cells transfected with RC224930 using transfection reagent MegaTran 2.0 (Cat# [TT210002]).



Coomassie blue staining of purified KIF4B protein (Cat# [TP324930]). The protein was produced from HEK293T cells transfected with KIF4B cDNA clone (Cat# RC224930) using MegaTran 2.0 (Cat# [TT210002]).