

## Product datasheet for **RC224928**

### Nogo B receptor (NUS1) (NM\_138459) Human Tagged ORF Clone

#### Product data:

Product Type:	Expression Plasmids
Product Name:	Nogo B receptor (NUS1) (NM_138459) Human Tagged ORF Clone
Tag:	Myc-DDK
Symbol:	Nogo B receptor
Synonyms:	C6orf68; CDG1AA; MGC:7199; MRD55; NgBR; TANGO14
Mammalian Cell Selection:	Neomycin
Vector:	pCMV6-Entry (PS100001)
E. coli Selection:	Kanamycin (25 ug/mL)
ORF Nucleotide Sequence:	>RC224928 representing NM_138459 Red=Cloning site Blue=ORF Green=Tags(s)

TTTGTGAATACGACTCACTATAGGGCGGCCGGAATTCGTCGACTGGATCCGGTACCGAGGAGATCTGCC  
GCC**CGATCGCC**

ATGACGGGGCTGTACGAGCTGGTGTGGCGGGTGTGCACGCGCTGCTCTGTCTGCACCGCACGCTCACCT  
CCTGGCTCCGCGTTCGGTTCGGCACCTGGAAGTGGATCTGGCGGCGCTGCTGCCGCGCGCCTCTGCCGC  
GGTCTAGCGCCGCTCGGCTTCACGCTCCGCAAGCCCCGGCAGTCGGCAGGAACCGCCGTACCAACCGG  
CACCCGCGCGGGGGTCTGCTGCGCAGCCGCACACCACCGGATGCGCTGGCGCGGACGGTCGTTCTCT  
TGGAGAAGCTGCCTGTGCATATGGGCCTGGTGATCACCGAGGTGGAGCAGGAACCCAGCTTCTCGGACAT  
CGCGAGCCTCGTGGTGTGGTGTATGGCCGTGGGCATCTCCTACATTAGCGTCTACGACCAAGGTATT  
TTCAAAAGAAATAATTCCAGATTGATGGATGAAATTTTAAACACAGCAAGAATTCTGGGCCTAGATT  
GTTCAAAATACTCACCAGAATTTGCAAATAGTAATGACAAAGATGATCAAGTTTTAAATTGCCATTTGGC  
AGTGAAGGTGCTGTCTCCGGAAGATGAAAAGCAGATATTGTAAGAGCTGCTCAGGACTTTTGCCAGTTA  
GTAGCCCAAGCAAGCAAGAGACCCACAGATTTGGATGTAGATACGTTAGCCAGTTTACTAGTTCAAATG  
GTTGTCTGATCCTGATTTAGTATTGAAGTTCGGTCTGTGGACAGCACATTAGGCTTTCTCCCTGGCA  
CATCAGATTGACTGAGATTGTCTTTGCCTTCCACCTAAACATCAGTTATGAGGACTTTTCTCTGCC  
CTTCGTCATATGCAGCCTGTGAACAGCGTCTGGGAAAG

**ACGCGT**ACGCGGCGCTCGAGCAGAACTCATCTCAGAAGAGGATCTGGCAGCAAATGATATCCTGGATT  
ACAAGGATGACGACGATAAGGTTTAA



[View online »](#)

**Protein Sequence:** >RC224928 representing NM\_138459  
 Red=Cloning site Green=Tags(s)

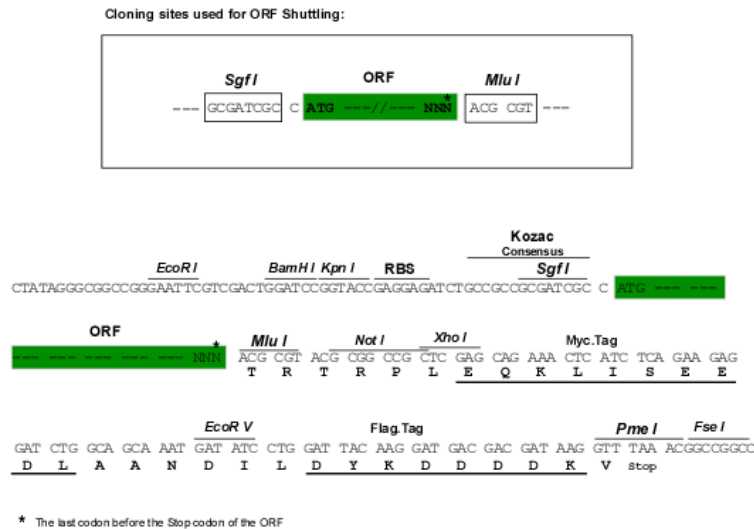
MTGLYELVWRVLHALLCLHRTLTSWLRVRFGTWNWIWRRCCRAASA AVLAPLGFTLRKPPAVGRNRRHHR  
 HPRGGSCLA AAHHRMRWRADGRSLEKLPVHMLVITEVEQEPSFSDIASLVVWCMVAGISYISVYDHQGI  
 FKRNN SRLMDEILKQQQELLGLDCSKYSPEFANSNDKDDQVLNCHLAVKVLSPEDGKADIVRAAQDFCQL  
 VAQKQKRPTDLDVDTLASLLSSNGCPDPLVLKFGPVDSTLGFLPWHIRLTEIVSLPSHLNISYEDFFSA  
 LRQYAACEQRLGK

TRTRPLEQKLISEEDLAANDILDYKDDDDKV

**Chromatograms:** [https://cdn.origene.com/chromatograms/mk6095\\_e06.zip](https://cdn.origene.com/chromatograms/mk6095_e06.zip)

**Restriction Sites:** SgfI-MluI

**Cloning Scheme:**



**ACCN:** NM\_138459

**ORF Size:** 879 bp

**OTI Disclaimer:** The molecular sequence of this clone aligns with the gene accession number as a point of reference only. However, individual transcript sequences of the same gene can differ through naturally occurring variations (e.g. polymorphisms), each with its own valid existence. This clone is substantially in agreement with the reference, but a complete review of all prevailing variants is recommended prior to use. [More info](#)

**OTI Annotation:** This clone was engineered to express the complete ORF with an expression tag. Expression varies depending on the nature of the gene.

**Components:** The ORF clone is ion-exchange column purified and shipped in a 2D barcoded Matrix tube containing 10ug of transfection-ready, dried plasmid DNA (reconstitute with 100 ul of water).

**Reconstitution Method:**

1. Centrifuge at 5,000xg for 5min.
2. Carefully open the tube and add 100ul of sterile water to dissolve the DNA.
3. Close the tube and incubate for 10 minutes at room temperature.
4. Briefly vortex the tube and then do a quick spin (less than 5000xg) to concentrate the liquid at the bottom.
5. Store the suspended plasmid at -20°C. The DNA is stable for at least one year from date of shipping when stored at -20°C.

**Note:** Plasmids are not sterile. For experiments where strict sterility is required, filtration with 0.22um filter is required.

**RefSeq:** [NM\\_138459.5](#)

**RefSeq Size:** 2636 bp

**RefSeq ORF:** 882 bp

**Locus ID:** 116150

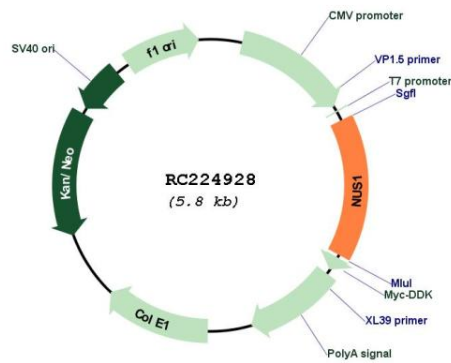
**UniProt ID:** [Q96E22](#)

**Cytogenetics:** 6q22.1

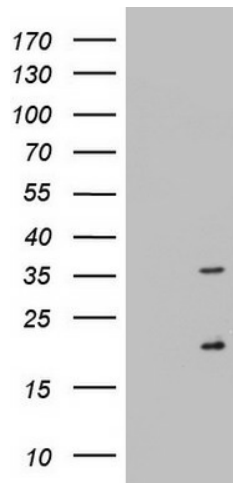
**MW:** 33 kDa

**Gene Summary:** This gene encodes a type I single transmembrane domain receptor, which is a subunit of cis-prenyltransferase, and serves as a specific receptor for the neural and cardiovascular regulator Nogo-B. The encoded protein is essential for dolichol synthesis and protein glycosylation. This gene is highly expressed in non-small cell lung carcinomas as well as estrogen receptor-alpha positive breast cancer cells where it promotes epithelial mesenchymal transition. This gene is associated with the poor prognosis of human hepatocellular carcinoma patients. Naturally occurring mutations in this gene cause a congenital disorder of glycosylation and are associated with epilepsy. A knockout of the orthologous gene in mice causes embryonic lethality before day 6.5. Pseudogenes of this gene have been defined on chromosomes 13 and X. [provided by RefSeq, May 2017]

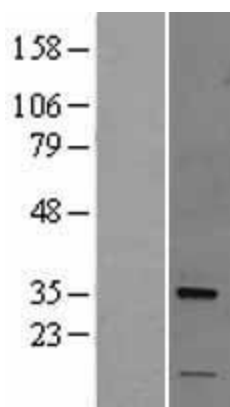
## Product images:



Circular map for RC224928



HEK293T cells were transfected with the pCMV6-ENTRY control (Cat# [PS100001], Left lane) or pCMV6-ENTRY NUS1 (Cat# RC224928, Right lane) cDNA for 48 hrs and lysed. Equivalent amounts of cell lysates (5 ug per lane) were separated by SDS-PAGE and immunoblotted with anti-NUS1 (Cat# [TA803142]). Positive lysates [LY403360] (100ug) and [LC403360] (20ug) can be purchased separately from OriGene.



Western blot validation of overexpression lysate (Cat# [LY403360]) using anti-DDK antibody (Cat# [TA50011-100]). Left: Cell lysates from untransfected HEK293T cells; Right: Cell lysates from HEK293T cells transfected with RC224928 using transfection reagent MegaTran 2.0 (Cat# [TT210002]).