

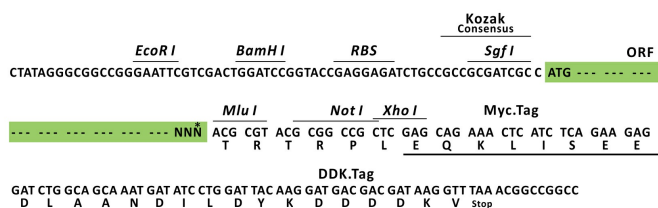
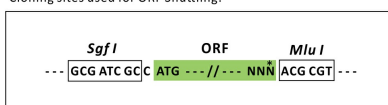
Product datasheet for RC224902L1

GABRP (NM_014211) Human Tagged Lenti ORF Clone

Product data:

Product Type:	Expression Plasmids
Product Name:	GABRP (NM_014211) Human Tagged Lenti ORF Clone
Tag:	Myc-DDK
Symbol:	GABRP
Mammalian Cell Selection:	None
Vector:	pLenti-C-Myc-DDK (PS100064)
E. coli Selection:	Chloramphenicol (34 ug/mL)
ORF Nucleotide Sequence:	The ORF insert of this clone is exactly the same as(RC224902).
Restriction Sites:	Sgfl-MluI
Cloning Scheme:	

Cloning sites used for ORF Shuttling:



* The last codon before the Stop codon of the ORF.

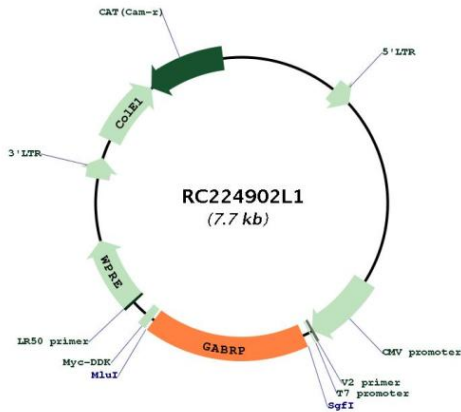
ACCN:	NM_014211
ORF Size:	1320 bp



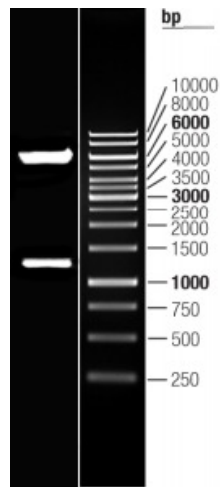
[View online »](#)

OTI Disclaimer:	The molecular sequence of this clone aligns with the gene accession number as a point of reference only. However, individual transcript sequences of the same gene can differ through naturally occurring variations (e.g. polymorphisms), each with its own valid existence. This clone is substantially in agreement with the reference, but a complete review of all prevailing variants is recommended prior to use. More info
OTI Annotation:	This clone was engineered to express the complete ORF with an expression tag. Expression varies depending on the nature of the gene.
Components:	The ORF clone is ion-exchange column purified and shipped in a 2D barcoded Matrix tube containing 10ug of transfection-ready, dried plasmid DNA (reconstitute with 100 ul of water).
Reconstitution Method:	<ol style="list-style-type: none">1. Centrifuge at 5,000xg for 5min.2. Carefully open the tube and add 100ul of sterile water to dissolve the DNA.3. Close the tube and incubate for 10 minutes at room temperature.4. Briefly vortex the tube and then do a quick spin (less than 5000xg) to concentrate the liquid at the bottom.5. Store the suspended plasmid at -20°C. The DNA is stable for at least one year from date of shipping when stored at -20°C.
RefSeq:	NM_014211.1
RefSeq Size:	3310 bp
RefSeq ORF:	1323 bp
Locus ID:	2568
UniProt ID:	O00591
Cytogenetics:	5q35.1
Domains:	Neur_chan_memb, Neur_chan_LBD
Protein Families:	Druggable Genome, Ion Channels: Cys-loop Receptors, Transmembrane
Protein Pathways:	Neuroactive ligand-receptor interaction
MW:	50.6 kDa
Gene Summary:	The gamma-aminobutyric acid (GABA) A receptor is a multisubunit chloride channel that mediates the fastest inhibitory synaptic transmission in the central nervous system. The subunit encoded by this gene is expressed in several non-neuronal tissues including the uterus and ovaries. This subunit can assemble with known GABA A receptor subunits, and the presence of this subunit alters the sensitivity of recombinant receptors to modulatory agents such as pregnanolone. Alternatively spliced transcript variants encoding different isoforms have been found for this gene. [provided by RefSeq, May 2014]

Product images:



Circular map for RC224902L1



Double digestion of RC224902L1 using SgfI and MluI