

## Product datasheet for **RC224900**

### **PDE9A (NM\_001001583) Human Tagged ORF Clone**

#### **Product data:**

Product Type:	Expression Plasmids
Product Name:	PDE9A (NM_001001583) Human Tagged ORF Clone
Tag:	Myc-DDK
Symbol:	PDE9A
Synonyms:	HSPDE9A2
Mammalian Cell Selection:	Neomycin
Vector:	pCMV6-Entry (PS100001)
E. coli Selection:	Kanamycin (25 ug/mL)



[View online »](#)

**ORF Nucleotide Sequence:**

>RC224900 representing NM\_001001583  
 Red=Cloning site Blue=ORF Green=Tags(s)

TTTTGTAATACGACTCACTATAGGGCGGCCGGAATTCGTCGACTGGATCCGGTACCGAGGAGATCTGCC  
 GCC**CGGATCGCC**

ATGGGATCCGGCTCCTCCAGCTACCGGCCAAGGCCATCTACCTGGACATCGATGGACGCATTCAAGAAGG  
 TAATCTTCAGCAAGTACTGCAACTCCAGCGACATCATGGACCTGTTCTGCATCGCCACCGCCTGCCTCG  
 CACTCCGTACAAAGTGAGACCTGTGGCCATCAAGCAACTCTCCGCTGGTGTGAGGACAAGAGAACCACA  
 AGCCGTGGCCAGTCTGCTGAGAGACCACTGAGGGACAGACGGTTGTGGGCTGGAGCAGCCCCGGAGGG  
 AAGGAGCATTTGAAAGTGGACAGGTAGAGCCCAGGCCAGAGAGCCCCAGGGCTGCTACCAGGAAGGCCA  
 GCGCATCCCTCCAGAGAGAGAAGAATTAATCCAGAGCGTGTGGCGCAGGTTGCAGAGCAGTTCTCAAGA  
 GCATTCAAAATCAATGAACTGAAAGCTGAAGTTGCAAATCACTTGGCTGTCTAGAGAAACGCGTGAAT  
 TGAAGGACTAAAAGTGGTGGAGATTGAGAAATGCAAGAGTGACATTAAGAAGATGAGGGAGGAGCTGGC  
 GGCCAGAAGCAGCAGGACCAACTGCCCCGTAAAGTACAGTTTTTTGGATAACCACAAGAAGTTGACTCCT  
 CGACGCGATGTTCCCACTTACCCCAAGTACCTGCTCTCTCCAGAGACCATCGAGGCCCTGCGGAAGCCGA  
 CCTTTGACGTCTGGCTTTGGGAGCCCAATGAGATGCTGAGCTGCCTGGAGCAGTGTACCACGACCTCGG  
 GCTGGTACGGGACTTCAGCATCAACCCTGTACCCCTCAGGAGGTGGCTGTTCTGCGTCCACGACAACTAC  
 AGAAACAACCCCTTCCACAACCTCCGGCACTGCTTCTGCGTGGCCAGATGATGTACAGCATGGTCTGGC  
 TCTGCAGTCTCCAGGAGAAGTTCTCACAACCGGATATCTGATCCTAATGACAGCGGCCATCTGCCACGA  
 TCTGGACCATCCCGGCTACAACAACAGTACCAGATCAATGCCCGCACAGAGCTGGCGTCCGCTACAAT  
 GACATCTACCCGCTGGAGAACCACCACTGCGCCGTGGCCTTCCAGATCCTCGCCGAGCCTGAGTGCACA  
 TCTTCTCCAACATCCCACCTGATGGGTTCAAGCAGATCCGACAGGGAATGATCACATTAATCTTGGCCAC  
 TGACATGGCAAGACATGCAGAAAATTATGGATTCTTTCAAAGAGAAAATGGAGAATTTTACTACAGCAAC  
 GAGGAGCACATGACCCTGCTGAAGATGATTTTGATAAAAATGCTGTGATATCTCTAACGAGGTCCGTC  
 TGAAGTGCAGAGCCTTGGGTGGACTGTTATTAGAGGAATATTTTATGCAGAGCGACCGTGAAGTGC  
 AGAAGGCCTTCTGTGGCACCGTTCATGGACCGAGACAAAGTGACCAAGGCCACAGCCAGATTGGGTTC  
 ATCAAGTTTGCCTGATCCCAATGTTTGAACAGTGACCAAGCTTCCCCATGGTTGAGGAGATCATGC  
 TGCAGCCACTTTGGGAATCCCGAGATCGCTACGAGGAGCTGAAGCGGATAGATGACGCCATGAAAGATT  
 ACAGAAGAAGACTGACAGCTTGACGTCTGGGGCCACCGAGAAGTCCAGAGAGAGAAGCAGAGATGTGAAA  
 AACAGTGAAGGAGACTGTGCC

**ACGGGCGCGCTCGAGCAGAACTCATCTCAGAAGAGGATCTGGCAGCAAATGATATCCTGGAA**  
**TTACAAGGATGACGACGATAAGGTTTAA**

**Protein Sequence:**

>RC224900 representing NM\_001001583  
 Red=Cloning site Green=Tags(s)

MGS~~SSSYR~~PKAIYLDIDGRIQKVI~~FSKYCN~~SSD~~IMDLFCI~~ATGLPRT~~YPKVR~~PAIKQLSAGVEDKRTT  
 SRGQSAERPLRDRRVVGL~~EQPRREGAFESGQVEPRPREPQGCYQEGQRIPPEREELIQSVLAQVAEQFSR~~  
 AFKINELKAEVANHLAVLEK~~RVELEGLKVV~~IEKCKSDIK~~MMREELAARSSRTNCPCKYSFLDNHKKLTP~~  
 RRDVPTYPKYLLSPETIEAL~~RKPTFDVWLWEPNEMLSCLEHMYHDLGLVRDFSINPVTLRRWLCVHDNY~~  
 RNNPFH~~NRHCF~~CVAQ~~MMYSMVWLCSLQEKFSQTDILILMTAAI~~CHDL~~DHPGYNNTYQINARTE~~LAVRYN  
 DISPLEN~~HHCAVAFQILAEPECNIFSNIPPDGFKQIRQGMITLILATDMARHAEIMDSFKEKMF~~DYSN  
 EEHMTLLK~~MILIKCCDISNEVRPMEVAEPWVDCLLEEYFMQSDREKSEGLPVAPFMDRDKVTKATAQIGF~~  
 IKFVLI~~PMFETVTKL~~FPMVEE~~I~~MLQ~~PLWESRD~~YEELKR~~IDDAMKELQKKTDSL~~TSGATEKSRERS~~RDVK~~  
 NSEGDCA

**TRRLEQKLI**SEEDLAANDILDYKDDDDKV

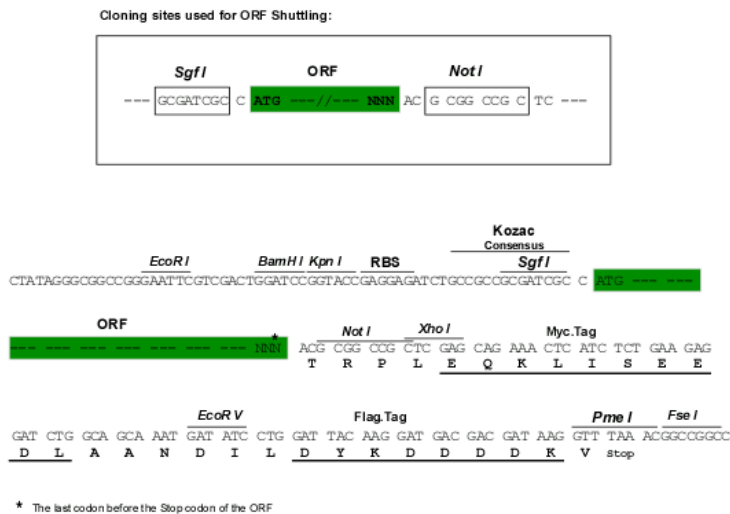
**Chromatograms:**

[https://cdn.origene.com/chromatograms/mk8067\\_f10.zip](https://cdn.origene.com/chromatograms/mk8067_f10.zip)

**Restriction Sites:**

Sgfl-NotI

Cloning Scheme:



ACCN: NM\_001001583

ORF Size: 1701 bp

OTI Disclaimer: The molecular sequence of this clone aligns with the gene accession number as a point of reference only. However, individual transcript sequences of the same gene can differ through naturally occurring variations (e.g. polymorphisms), each with its own valid existence. This clone is substantially in agreement with the reference, but a complete review of all prevailing variants is recommended prior to use. [More info](#)

OTI Annotation: This clone was engineered to express the complete ORF with an expression tag. Expression varies depending on the nature of the gene.

Components: The ORF clone is ion-exchange column purified and shipped in a 2D barcoded Matrix tube containing 10ug of transfection-ready, dried plasmid DNA (reconstitute with 100 ul of water).

- Reconstitution Method:
1. Centrifuge at 5,000xg for 5min.
  2. Carefully open the tube and add 100ul of sterile water to dissolve the DNA.
  3. Close the tube and incubate for 10 minutes at room temperature.
  4. Briefly vortex the tube and then do a quick spin (less than 5000xg) to concentrate the liquid at the bottom.
  5. Store the suspended plasmid at -20°C. The DNA is stable for at least one year from date of shipping when stored at -20°C.

RefSeq: [NM\\_001001583.1](#), [NP\\_001001583.1](#)

RefSeq Size: 2025 bp

RefSeq ORF: 1704 bp

Locus ID: 5152

UniProt ID: [O76083](#)

Cytogenetics: 21q22.3

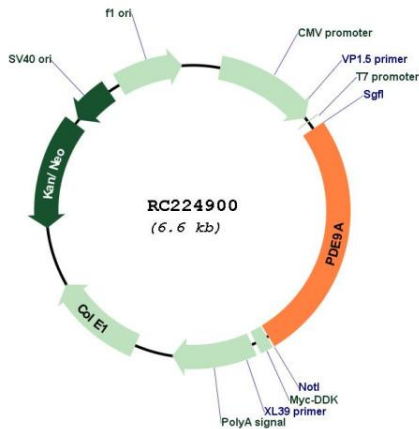
**Protein Families:** Druggable Genome

**Protein Pathways:** Progesterone-mediated oocyte maturation, Purine metabolism

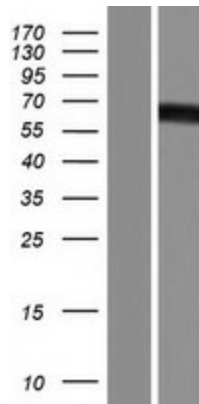
**MW:** 65.5 kDa

**Gene Summary:** The protein encoded by this gene catalyzes the hydrolysis of cAMP and cGMP to their corresponding monophosphates. The encoded protein plays a role in signal transduction by regulating the intracellular concentration of these cyclic nucleotides. Multiple transcript variants encoding several different isoforms have been found for this gene. [provided by RefSeq, Jul 2008]

**Product images:**



Circular map for RC224900



Western blot validation of overexpression lysate (Cat# [LY424400]) using anti-DDK antibody (Cat# [TA50011-100]). Left: Cell lysates from untransfected HEK293T cells; Right: Cell lysates from HEK293T cells transfected with RC224900 using transfection reagent MegaTran 2.0 (Cat# [TT210002]).