

Product datasheet for **RC224896**

ICEBERG (CARD18) (NM_021571) Human Tagged ORF Clone

Product data:

Product Type: Expression Plasmids
Product Name: ICEBERG (CARD18) (NM_021571) Human Tagged ORF Clone
Tag: Myc-DDK
Symbol: ICEBERG
Synonyms: ICEBERG; pseudo-ICE; UNQ5804
Mammalian Cell Selection: Neomycin
Vector: pCMV6-Entry (PS100001)
E. coli Selection: Kanamycin (25 ug/mL)
ORF Nucleotide Sequence: >RC224896 representing NM_021571
Red=Cloning site Blue=ORF Green=Tags(s)

TTTTGTAATACGACTCACTATAGGGCGGCCGGAATTCGTCGACTGGATCCGGTACCGAGGAGATCTGCC
GCC**CGATCGCC**

ATGGCTGACCAACTCTTGCGTAAAAGAGAAGAATTTTTATCCATTCAGTGGTGCAGGCACAATAAATG
CCTTGCTGGATTGCCTATTAGAGGATGAAGTTATTAGCCAGGAAGACATGAACAAAGTGAGAGATGAAAA
TGACACTGTTCATGGATAAGGCTCGAGTCTTGATTGACCTTGTTACTGGAAAAGGACCCAAGTCTTGCTGC
AAATTTATCAAGCATCTCTGTGAAGAAGACCCTCAACTTGCTCAAAGATGGGTTTGAC

ACGCGTACGCGGCCGCTCGAGCAGAACTCATCTCAGAAGAGGATCTGGCAGCAAATGATATCCTGGATT
ACAAGGATGACGACGATAAGGTTTAA

Protein Sequence: >RC224896 representing NM_021571
Red=Cloning site Green=Tags(s)

MADQLLRKKRRIFIHSVGAGTINALLDLLEDEVISQEDMNVKVRDENDTVMDKARVLIDLVTGKGPKSCC
KFIKHLCEEDPQLASKMGLH

TRTRPLEQKLISEEDLAANDILDYKDDDDKV

Chromatograms: https://cdn.origene.com/chromatograms/mk8044_d12.zip

Restriction Sites: Sgfl-MluI



[View online »](#)

Cloning Scheme:


ACCN: NM_021571

ORF Size: 270 bp

OTI Disclaimer: The molecular sequence of this clone aligns with the gene accession number as a point of reference only. However, individual transcript sequences of the same gene can differ through naturally occurring variations (e.g. polymorphisms), each with its own valid existence. This clone is substantially in agreement with the reference, but a complete review of all prevailing variants is recommended prior to use. [More info](#)

OTI Annotation: This clone was engineered to express the complete ORF with an expression tag. Expression varies depending on the nature of the gene.

Components: The ORF clone is ion-exchange column purified and shipped in a 2D barcoded Matrix tube containing 10ug of transfection-ready, dried plasmid DNA (reconstitute with 100 ul of water).

- Reconstitution Method:**
1. Centrifuge at 5,000xg for 5min.
 2. Carefully open the tube and add 100ul of sterile water to dissolve the DNA.
 3. Close the tube and incubate for 10 minutes at room temperature.
 4. Briefly vortex the tube and then do a quick spin (less than 5000xg) to concentrate the liquid at the bottom.
 5. Store the suspended plasmid at -20°C. The DNA is stable for at least one year from date of shipping when stored at -20°C.

RefSeq: [NM_021571.4](#)

RefSeq Size: 431 bp

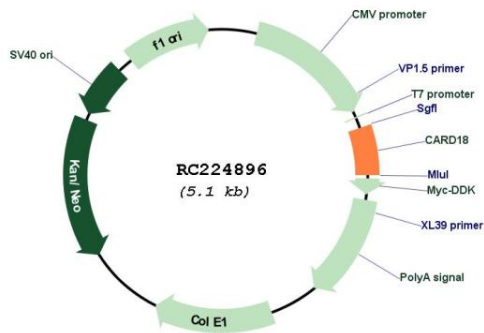
RefSeq ORF: 273 bp

Locus ID: 59082

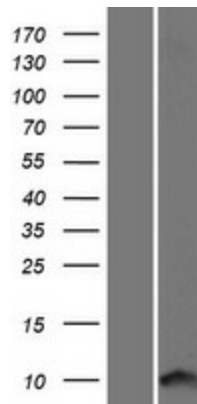
UniProt ID: [P57730](#)
Cytogenetics: 11q22.3
Protein Families: Druggable Genome
Protein Pathways: NOD-like receptor signaling pathway
MW: 10 kDa

Gene Summary: Inhibits generation of IL-1-beta by interacting with caspase-1 and preventing its association with RIP2. Down-regulates the release of IL1B.[UniProtKB/Swiss-Prot Function]

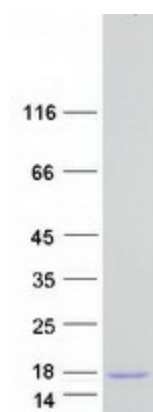
Product images:



Circular map for RC224896



Western blot validation of overexpression lysate (Cat# [LY411985]) using anti-DDK antibody (Cat# [TA50011-100]). Left: Cell lysates from untransfected HEK293T cells; Right: Cell lysates from HEK293T cells transfected with RC224896 using transfection reagent MegaTran 2.0 (Cat# [TT210002]).



Coomassie blue staining of purified CARD18 protein (Cat# [TP324896]). The protein was produced from HEK293T cells transfected with CARD18 cDNA clone (Cat# RC224896) using MegaTran 2.0 (Cat# [TT210002]).