

## Product datasheet for **RC224893**

### U2AF1L3 (U2AF1L4) (NM\_001040425) Human Tagged ORF Clone

#### Product data:

|                           |  |
|---------------------------|--|
| Product Type:             | Expression Plasmids  |
| Product Name:             | U2AF1L3 (U2AF1L4) (NM_001040425) Human Tagged ORF Clone                        |
| Tag:                      | Myc-DDK  |
| Symbol:                   | U2AF1L3  |
| Synonyms:                 | U2AF1-RS3; U2AF1L3; U2AF1L3V1; U2AF1RS3; U2af26                                |
| Mammalian Cell Selection: | Neomycin   |
| Vector:                   | pCMV6-Entry (PS100001)   |
| E. coli Selection:        | Kanamycin (25 ug/mL)   |
| ORF Nucleotide Sequence:  | >RC224893 representing NM_001040425<br>Red=Cloning site Blue=ORF Green=Tags(s) |

TTTTGTAATACGACTCACTATAGGGCGGCCGGAATTCGTCGACTGGATCCGGTACCGAGGAGATCTGCC  
GCC**CGATCGCC**

ATGGCTGAATATTTAGCTTCGATATTCGGGACTGAGAAGGACAAGGTTAACTGCTCTTTTACTTTAAGA  
TCGGGGTCTGCCGGCACGGGACCGGTGCTCCCGCTTACAACAAGCCGACATTCAGCCAGGAGGTGT  
CACAGAAGTGCAGGAGAAGTATGGGAGATTGAAGAGATGAATGTGTGCGACAACCTTGGGGACCACCTC  
GTGGGCAACGTCTATGTCAAGTCCGGAGGAGGAGGATGGAGAGCGGGCCGTGGCTGAAGTCAAGTCAAC  
GCTGGTCAACGGGACGGCTGTGCACGGTGTCTCTCTGTCAGTCTCCGGGAGTCATGCTGTCG  
CCAGTATGAGATGGGGGAATGTACCCGAGGTGGCTTCTGCAACTTCATGCATCTGCGGCCATTTCCAG  
AACCTCCAGAGGAGCTCTATGGGCGGGACCCAGGCGCAGGTCACCCCGAGGTTCCATACTGGCCACC  
ATCCCCGAGAGAGGAACCATCGGTGTTCCCTGATCACTGGCATGGCCGCTTC

**ACGCGT**ACGCGGCCGCTCGAGCAGAACTCATCTCAGAAGAGGATCTGGCAGCAAATGATATCCTGGATT  
ACAAGGATGACGACGATAAGGTTTAA

|                   |   |
|-------------------|---|
| Protein Sequence: | >RC224893 representing NM_001040425<br>Red=Cloning site Green=Tags(s) |
|-------------------|---|

MAEYLASIFGTEKDKVNCSFYFKIGVCRHGDRC SRLHNKPTFSQEVFTELQEKYGEIEEMNVCDNLGDHL  
VGNVYVKFRREEDGERAVAE LSNRWFNGQAVHGELSPVTD FRESCCRQYEMGECTRGGFCNFMHLRPI SQ  
NLQRQLYGRGPRRRSPRFHTGHHPRENRHRCSPDHWHRF

**TRTRPLEQKLI**SEEDLAANDILDYKDDDDKV

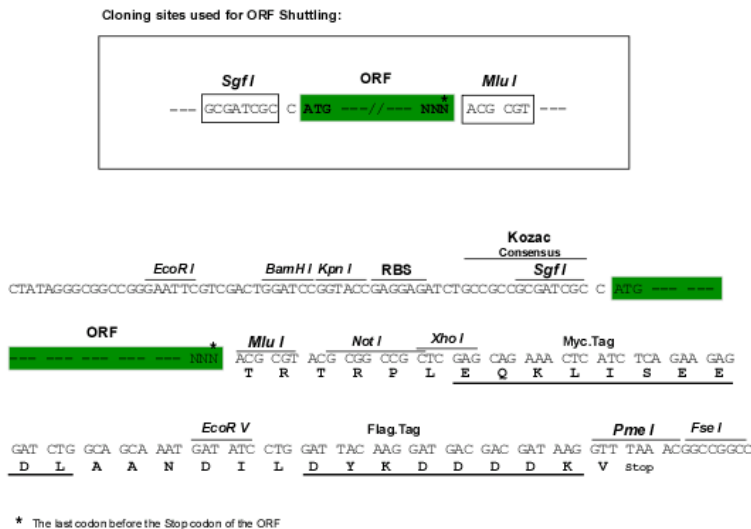
|                |   |
|----------------|---|
| Chromatograms: | <a href="https://cdn.origene.com/chromatograms/ja1465_f04.zip">https://cdn.origene.com/chromatograms/ja1465_f04.zip</a> |
|----------------|---|



[View online »](#)

**Restriction Sites:** SgfI-MluI

**Cloning Scheme:**



**ACCN:** NM\_001040425

**ORF Size:** 543 bp

**OTI Disclaimer:** The molecular sequence of this clone aligns with the gene accession number as a point of reference only. However, individual transcript sequences of the same gene can differ through naturally occurring variations (e.g. polymorphisms), each with its own valid existence. This clone is substantially in agreement with the reference, but a complete review of all prevailing variants is recommended prior to use. [More info](#)

**OTI Annotation:** This clone was engineered to express the complete ORF with an expression tag. Expression varies depending on the nature of the gene.

**Components:** The ORF clone is ion-exchange column purified and shipped in a 2D barcoded Matrix tube containing 10ug of transfection-ready, dried plasmid DNA (reconstitute with 100 ul of water).

**Reconstitution Method:**

1. Centrifuge at 5,000xg for 5min.
2. Carefully open the tube and add 100ul of sterile water to dissolve the DNA.
3. Close the tube and incubate for 10 minutes at room temperature.
4. Briefly vortex the tube and then do a quick spin (less than 5000xg) to concentrate the liquid at the bottom.
5. Store the suspended plasmid at -20°C. The DNA is stable for at least one year from date of shipping when stored at -20°C.

**Note:** Plasmids are not sterile. For experiments where strict sterility is required, filtration with 0.22um filter is required.

**RefSeq:** [NM\\_001040425.3](#)

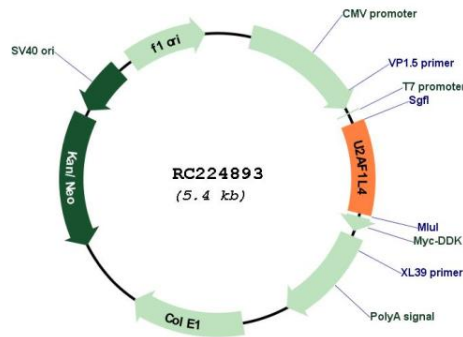
**RefSeq Size:** 792 bp

**RefSeq ORF:** 546 bp

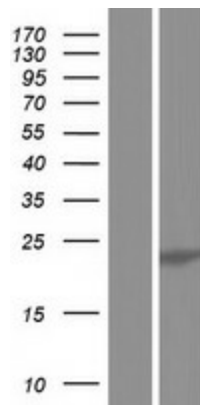
**Locus ID:** 199746  
**UniProt ID:** [Q8WU68](#)  
**Cytogenetics:** 19q13.12  
**MW:** 21.1 kDa

**Gene Summary:** RNA-binding protein that function as a pre-mRNA splicing factor. Plays a critical role in both constitutive and enhancer-dependent splicing by mediating protein-protein interactions and protein-RNA interactions required for accurate 3'-splice site selection. Acts by enhancing the binding of U2AF2 to weak pyrimidine tracts. Also participates in the regulation of alternative pre-mRNA splicing. Activates exon 5 skipping of PTPRC during T-cell activation; an event reversed by GFI1. Binds to RNA at the AG dinucleotide at the 3'-splice site (By similarity). Shows a preference for AGC or AGA (By similarity).[UniProtKB/Swiss-Prot Function]

### Product images:



Circular map for RC224893



Western blot validation of overexpression lysate (Cat# [LY421747]) using anti-DDK antibody (Cat# [TA50011-100]). Left: Cell lysates from untransfected HEK293T cells; Right: Cell lysates from HEK293T cells transfected with RC224893 using transfection reagent MegaTran 2.0 (Cat# [TT210002]).