

Product datasheet for **RC224892**

NSRP1 (NM_032141) Human Tagged ORF Clone

Product data:

Product Type:	Expression Plasmids
Product Name:	NSRP1 (NM_032141) Human Tagged ORF Clone
Tag:	Myc-DDK
Symbol:	NSRP1
Synonyms:	CCDC55; HSPC095; NSrp70
Mammalian Cell Selection:	Neomycin
Vector:	pCMV6-Entry (PS100001)
E. coli Selection:	Kanamycin (25 ug/mL)



[View online »](#)

ORF Nucleotide Sequence:

>RC224892 ORF sequence
 Red=Cloning site Blue=ORF Green=Tags(s)

TTTTGTAATACGACTCACTATAGGGCGGCCGGAATTCGTCGACTGGATCCGGTACCGAGGAGATCTGCC
 GCC**CGCATCGCC**

ATGGCGATTCCGGGCAGGCAGTATGGGCTATTTTGC~~AAAGAAAACACAGCAGTTGCACCTGTTT~~GC
 AAAAACCATCAGTGTGGGAATGATTCTGATGATGATGAGACCTCTGTGAGTGAAAGCCTTCAGAG
 GGAAGCTGCTAAGAAGCAGGCCATGAAACAGACCAAACCTGGAATCCAGAAGGCCCTGCAGAAGATGCT
 ACTGTGTATGAATATGACAGTATTTATGATGAAATGCAGAAAAAAGGAGGAAAATAATCCCAAATTC
 TTTTGGGAAAGACAGAAAGCCCAAGTATATTCACAACCTGCTAAAAGCAGTTGAGATCAGAAAAAGGA
 ACAGGAAAAAGAATGGAAGAAAATACAGAGAGAACGAGAAATGGAAGGGGGAGTTTGATGATAAA
 GAAGCATTGTGACATCTGCATAAAGAAAAACTGCAAGAGAGAGCTGAAGAAGAAGAAAGAGAAAAAG
 GGGCTGCTGCACTGGAAGCATGTTGGATGTAACCAAGCAGAAAGATCTCAGTGGATTTATAGGCACCT
 ATTAATCAAGCAGTTGGTGAAGAGGAAGTACCTAAATGCAGCTTCGTGAAGCCAGATCTGGTATAAG
 GAAGAAAAATCAAGGGGCTTCTCCAATGAAGTAAGTTCAAAAAACAGAATACCACAAGAGAAATGCATTC
 TTCAAACCTGATGTGAAAGTAGAGGAAAACCCAGATGCAGACAGTACTTCGATGCTAAGAGCAGTGC
 TGATGAAATAGAAGAACTAGAGTGAATGCAGAGGGGAAAAGGTCATAGAGACCCCTGAGAATGACTTC
 AAGCACCACAGGAGTCAAACCACTCTCGGTCACTAGTGAAGAAAGAGGGCACAGTACCAGGCACCACA
 CGAAAGGATCACGAACGTCGAGAGGACATGAGAAAAGGGAAGATCAGCACCAACAGAAGCAATCCAGAGA
 CCAAGAGAACCATTACTGACCGTGATTACCGGAAAGAAAGGGATTCTCATAGGCACAGAGAGGCCAGT
 CATAGAGATTCCCATTGGAAGAGGCATGAACAGGAAGATAAACAAGGGCGAGGGACCAAGAGAAAAGAA
 GTGACAGAGTATGGAAGGGGAGAAAGATAGGGAGAAATATTCCAAAGAGAACAAGAAAGAGATAGACA
 ACAAATGATCAGAACCACCCAGTGAGAAAGGAGAGAAGGAAGAGAAAAGCAAAGCAAAGGAAGAGCAT
 ATGAAAGTAAGGAAGGAAAGATATGAAATAATGATAAATACAGAGATAGAGAAAAACGAGAGGTAGGTG
 TTCAGTCTTCAGAAAGAAATCAAGACAGAAAGGAAAGCAGCCAAATTCAGGGCAAAGGATAAATTTCT
 TGACCAAGAAAGATCCAACAAAATGAGAAACATGGCAAAGGACAAAGAAAGAAACCAAGAGAAACCTCT
 AATTCTGAATCATCACTGGGAGCAAAACACAGACTCACAGAGGAAGGCAAGAGAAAGGTAAAGAACAAG
 AGAGACCACCTGAGGCAGTGAGCAAGTTTGCAAAGCGGAACAATGAAGAACTGTATGTCAGCTAGAGA
 CAGGTAATGGCCAGGCAGATGGCGGGTTAATGCAAAGACCTATATTGAGAAAGAAGATGAT

ACGCGTACGCGGCCGCTCGAGCAGAAACTCATCTCAGAAGAGGATCTGGCAGCAAATGATATCCTGGATT
 ACAAGGATGACGACGATAAGGTTTAA

Protein Sequence:

>RC224892 protein sequence
 Red=Cloning site Green=Tags(s)

MAIPGRQYGLILPKKTQQLHPVLQKPSVFGNDSDDDETSVSESLQREAAKKQAMKQTKLEIQKALAE
 TVYEYDSIYDEMOKKKEENPKLLLKDRPKYIHNLLKAVEIRKKEQEKMEKKIQREREMEKGEFDDK
 EAFVTSAYKKLQERAEEREKRAALEACLDVTKQKDLSGFYRHLNQAAGVEEVPKCSFREARSGIK
 EESRGRFSNEVSSKNRIPQEKILQTDVKVEENPDADSDFAKSSADDEIEETRVNCRREKVIETPENDF
 KHHRSQNHSRSPSEERGHSTRHHTKGSRTSRGHEKREDQHQQKQSRDQENHYTDRDYRKERD
 SHRHREASHRDQSHWRHEQEDKPRARDQRERSDRVWKREKREKYSQREQERDRQNDQNRPSEKGEK
 EEKSKAKEEHMKVRKERYENNDKYRDREKREVGQSSERNQDRKESSPNSRAKDKFLDQERSNKMR
 NMAKDKERNQEKPSNSESSLGAKHRLTEEGQEKGKEQERPPEAVSKFAKRNNEETVMSARDRYLARQ
 MARVNAKTYIEKEDD

TRTRPLEQKLISEEDLAANDILDYKDDDDKV

Chromatograms:

https://cdn.origene.com/chromatograms/mk6670_f10.zip

Restriction Sites:

SgfI-MluI

Cloning Scheme:


ACCN: NM_032141

ORF Size: 1674 bp

OTI Disclaimer: The molecular sequence of this clone aligns with the gene accession number as a point of reference only. However, individual transcript sequences of the same gene can differ through naturally occurring variations (e.g. polymorphisms), each with its own valid existence. This clone is substantially in agreement with the reference, but a complete review of all prevailing variants is recommended prior to use. [More info](#)

OTI Annotation: This clone was engineered to express the complete ORF with an expression tag. Expression varies depending on the nature of the gene.

Components: The ORF clone is ion-exchange column purified and shipped in a 2D barcoded Matrix tube containing 10ug of transfection-ready, dried plasmid DNA (reconstitute with 100 ul of water).

- Reconstitution Method:**
1. Centrifuge at 5,000xg for 5min.
 2. Carefully open the tube and add 100ul of sterile water to dissolve the DNA.
 3. Close the tube and incubate for 10 minutes at room temperature.
 4. Briefly vortex the tube and then do a quick spin (less than 5000xg) to concentrate the liquid at the bottom.
 5. Store the suspended plasmid at -20°C. The DNA is stable for at least one year from date of shipping when stored at -20°C.

Note: Plasmids are not sterile. For experiments where strict sterility is required, filtration with 0.22um filter is required.

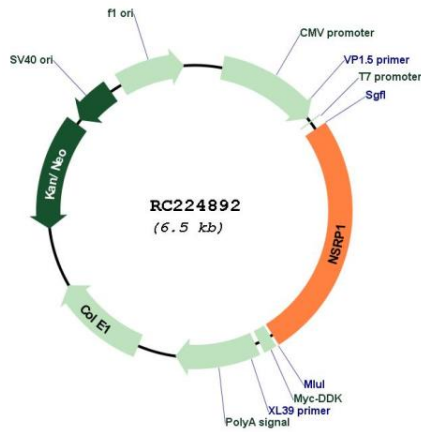
RefSeq: [NM_032141.4](#)

RefSeq Size: 2526 bp

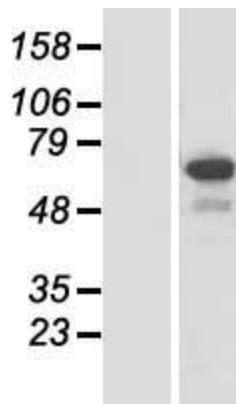
RefSeq ORF: 1677 bp

Locus ID: 84081

UniProt ID: [Q9H0G5](#)
Cytogenetics: 17q11.2
MW: 66.4 kDa
Gene Summary: RNA-binding protein that mediates pre-mRNA alternative splicing regulation. [UniProtKB/Swiss-Prot Function]

Product images:


Circular map for RC224892



Western blot validation of overexpression lysate (Cat# [LY410334]) using anti-DDK antibody (Cat# [TA50011-100]). Left: Cell lysates from untransfected HEK293T cells; Right: Cell lysates from HEK293T cells transfected with RC224892 using transfection reagent MegaTran 2.0 (Cat# [TT210002]).